

MMB SALMON HABITAT RECOVERY UNIT

2020 Report on 2019 Activities

Atlantic Salmon Collaborative Management Strategy

Public Meeting

May, 2020



Trapped Rivers

- Androscoggin River
 - 1 Hatchery origin
- Kennebec River
 - 2 Hatchery origin
 - 58 Naturally reared

Estimated Rivers

- Sheepscot River
 - 30 redds (est. 26 Adults)

ABUNDANCE

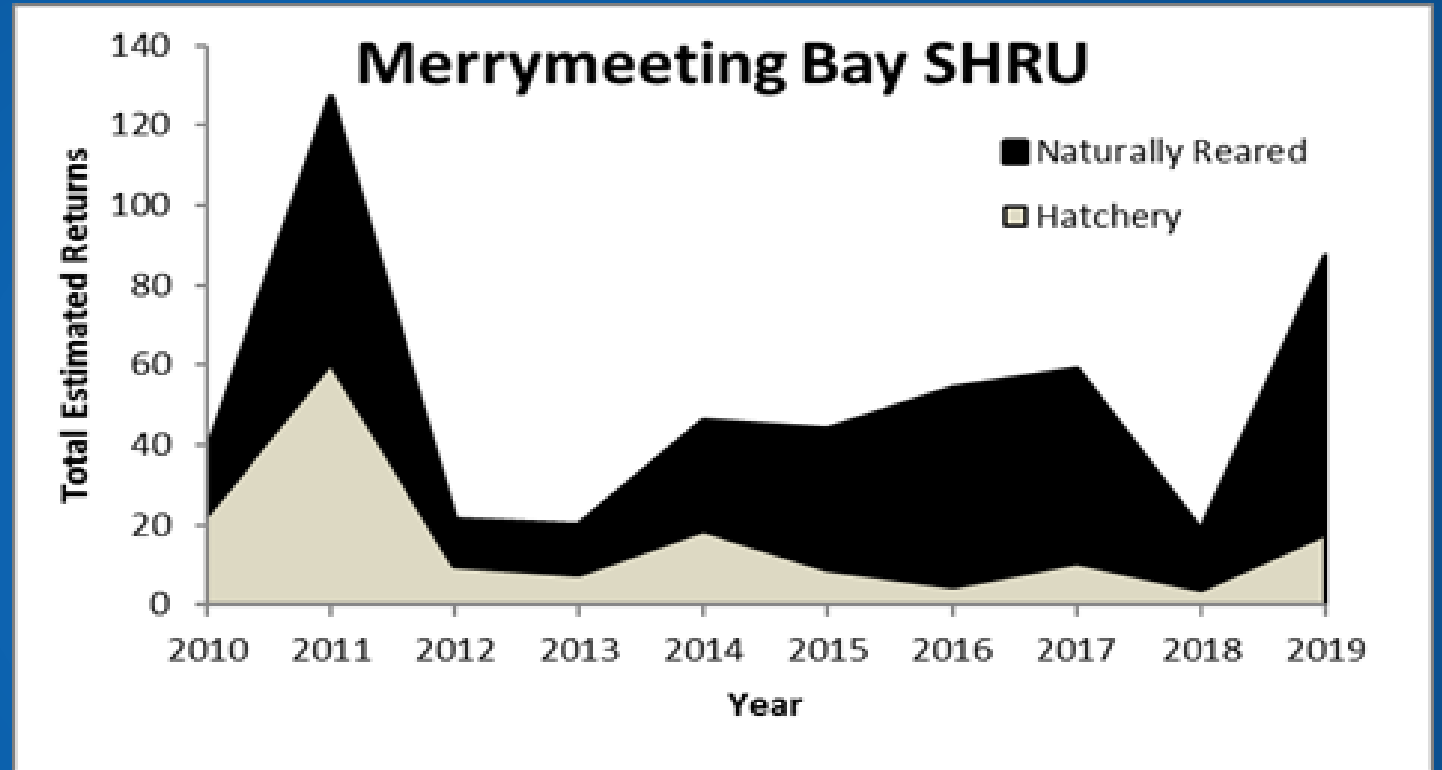


Figure. Adult returns of Atlantic salmon in the Merrymeeting Bay SHRU for the last 10 years. The Kennebec returns are indicative of adult returns upstream of the confluence with the Sebasticook (i.e. at the Lockwood fishlift).

REPLACEMENT RATE

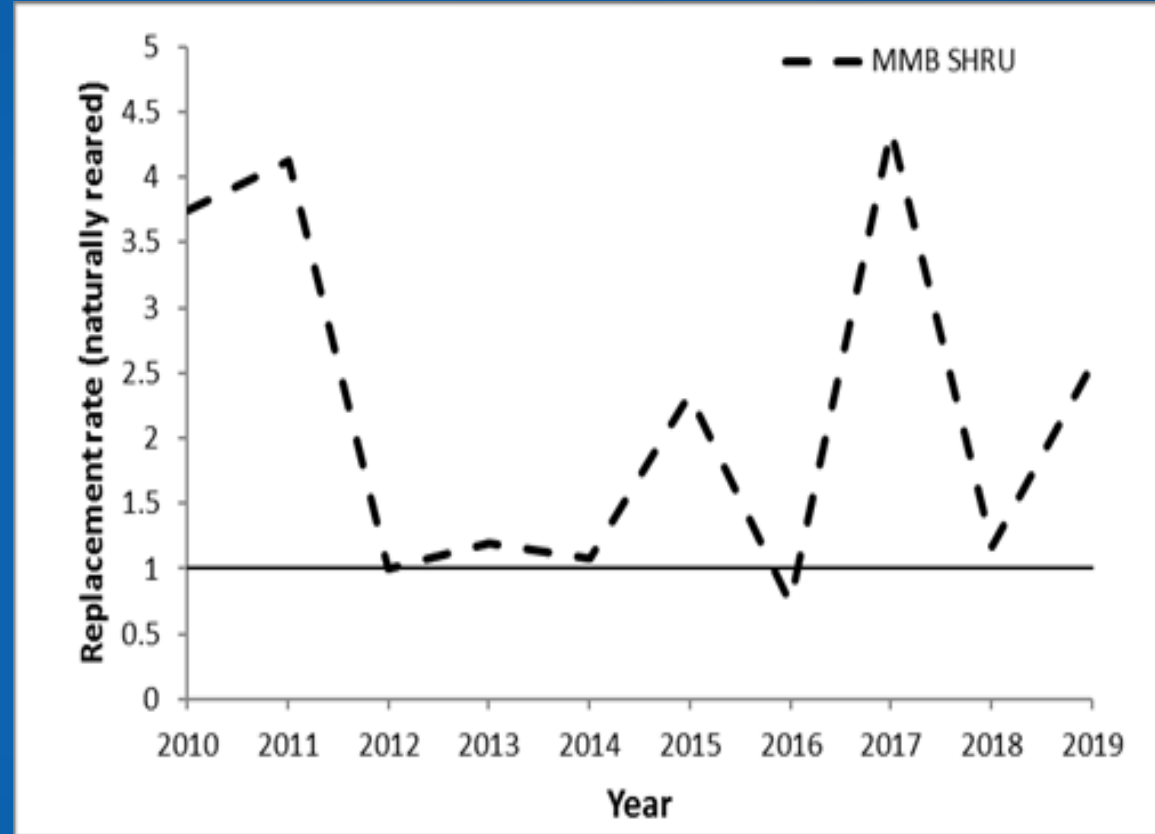


Figure. The geometric mean replacement rate for the Merrymeeting Bay SHRU. The five year replacement rate for the MMB SHRU was 2.55.

SPATIAL DISTRIBUTION

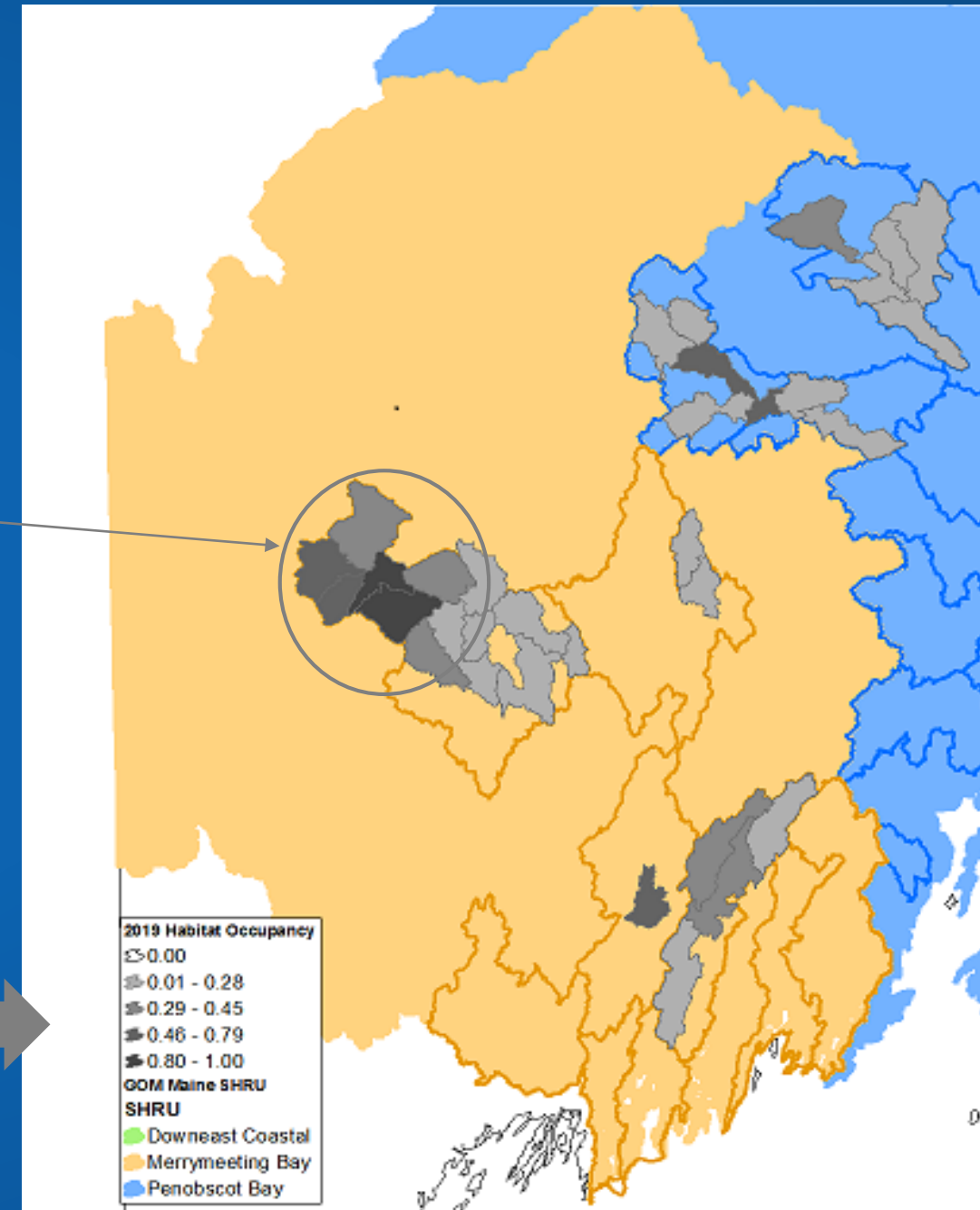
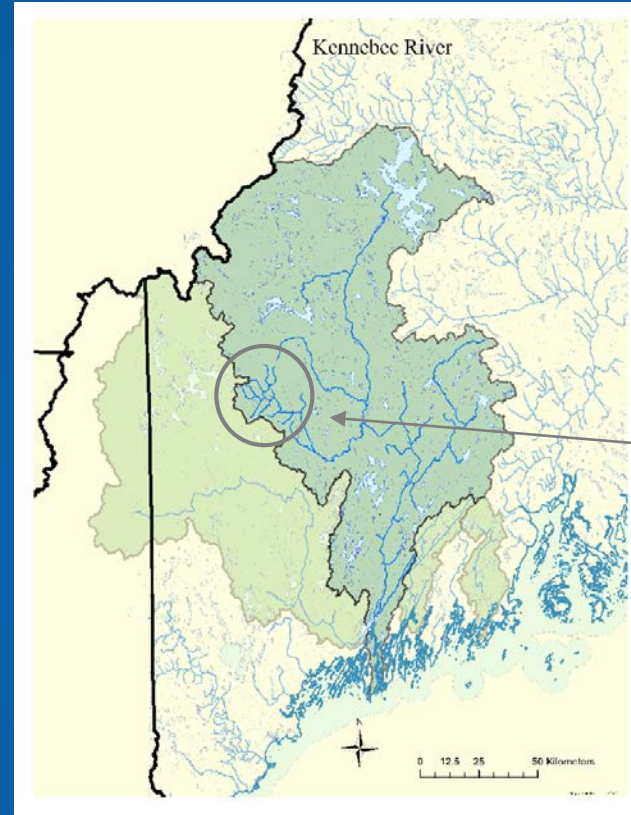


Figure. Map highlighting the relative proportion of river habitat occupied for the MMB SHRU (see figure legend) by the 2019 cohort at a HUC-12 watershed summary level. Production is a synthesis of modeled distributions from spawning surveys of Atlantic salmon in 2018, winter 2019 egg planting, and 2019 fry and parr stocking.

HABITAT ACCESS



To meet the standard of accessible habitat 1) habitat is accessible above a dam with upstream and downstream passage that does not preclude recovery, or 2) accessible above road stream crossings set at the correct elevation using the Stream Simulation methodology.

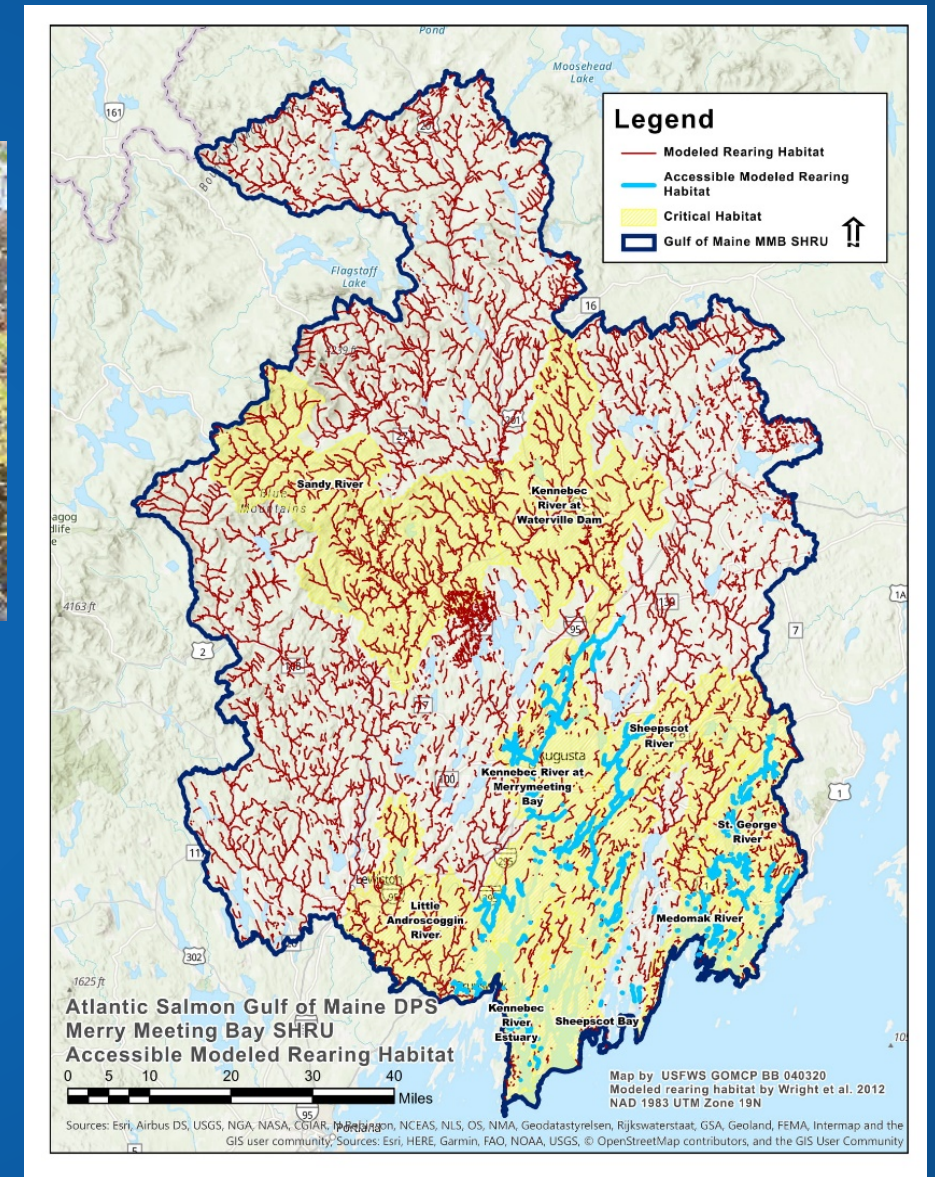


Figure 2c. Map of the MMB SHRU showing river and stream reaches accessible for anadromous fish.

RECOVERY RELATED PROJECTS



River	Project Name	Passage Improvement Type	Access (Stream Miles)	Lake/Pond Make Accessible (Acres)
Kennebec	Togus Stream Fishway	Accessible	N/A	790
Sheepscot	Headtide Dam Improvements	Accessible	60	N/A

STOCKING



Table. Atlantic salmon released in the Merrymeeting Bay SHRU

2019 Merrymeeting Bay Atlantic Salmon Released						
Drainage	Watershed	Eggs	Fry	Fall Parr	Smolts	Captive Reared Adults
Kennebec	Sandy River	917613	0	0	0	0
	Togus Stream	5128	0	0	0	0
Sheepscot	All	209582	9205	16845	0	0

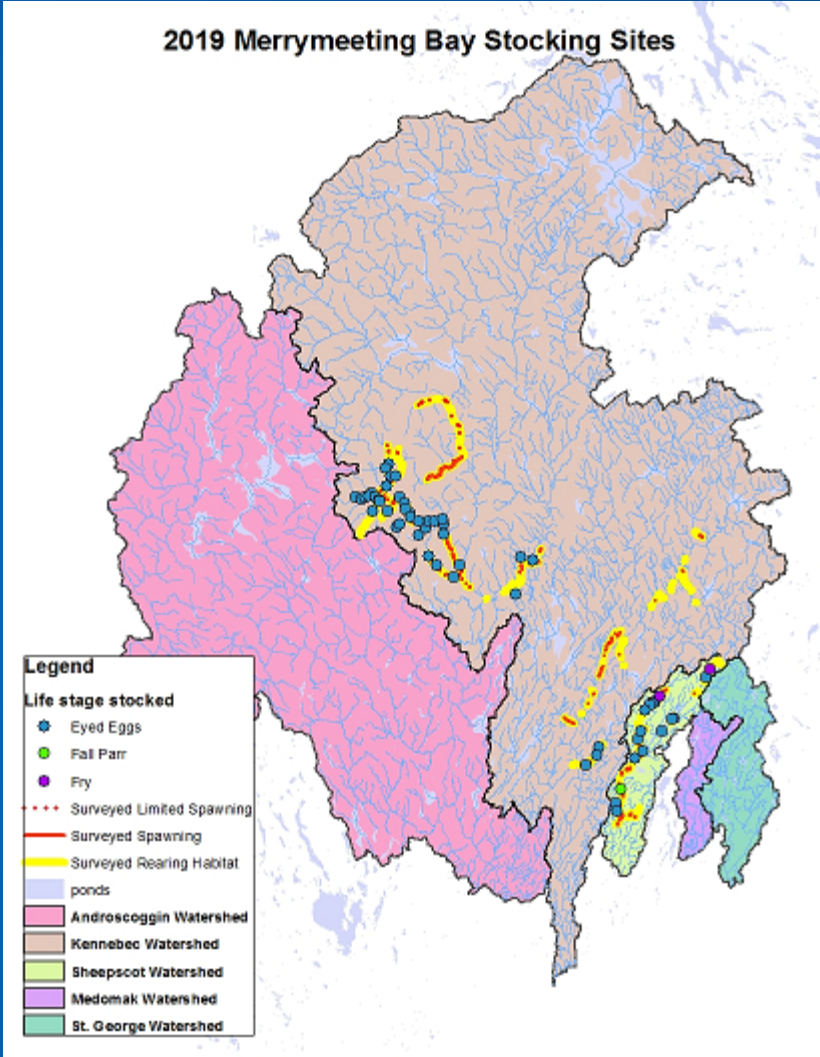


Figure. Map of stocking locations in the Merrymeeting Bay SHRU.

EMERGING ISSUES AND PRIORITIES

- Increase public engagement
 - Land Trusts
 - CMS
- Habitat Restoration
 - Pals in Sheepscot River
- Fish Passage Improvements
 - Culverts on Temple Stream
 - Walton Mills removal
- Parr Program in Sheepscot River

