

SHEDS

Applications Beyond New England

Jeffrey D Walker, PhD
Walker Environmental Research, LLC

MEWTWG Meeting
Dec 3, 2019

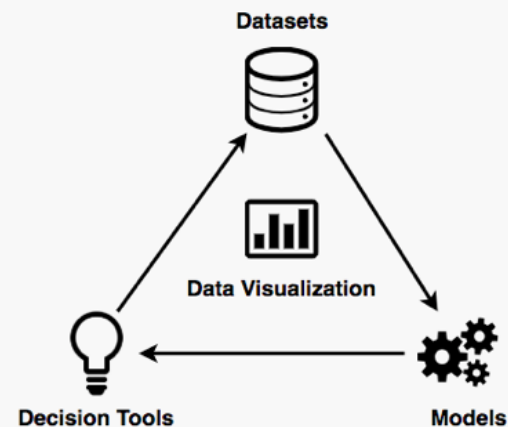
Spatial Hydro-Ecological Decision System (SHEDS)

Seamlessly linking hydro-ecological datasets, models, and decision support systems

What is SHEDS?

SHEDS is a collection of innovative data visualization and decision support tools for exploring and better understanding dynamic relationships in stream ecosystems.

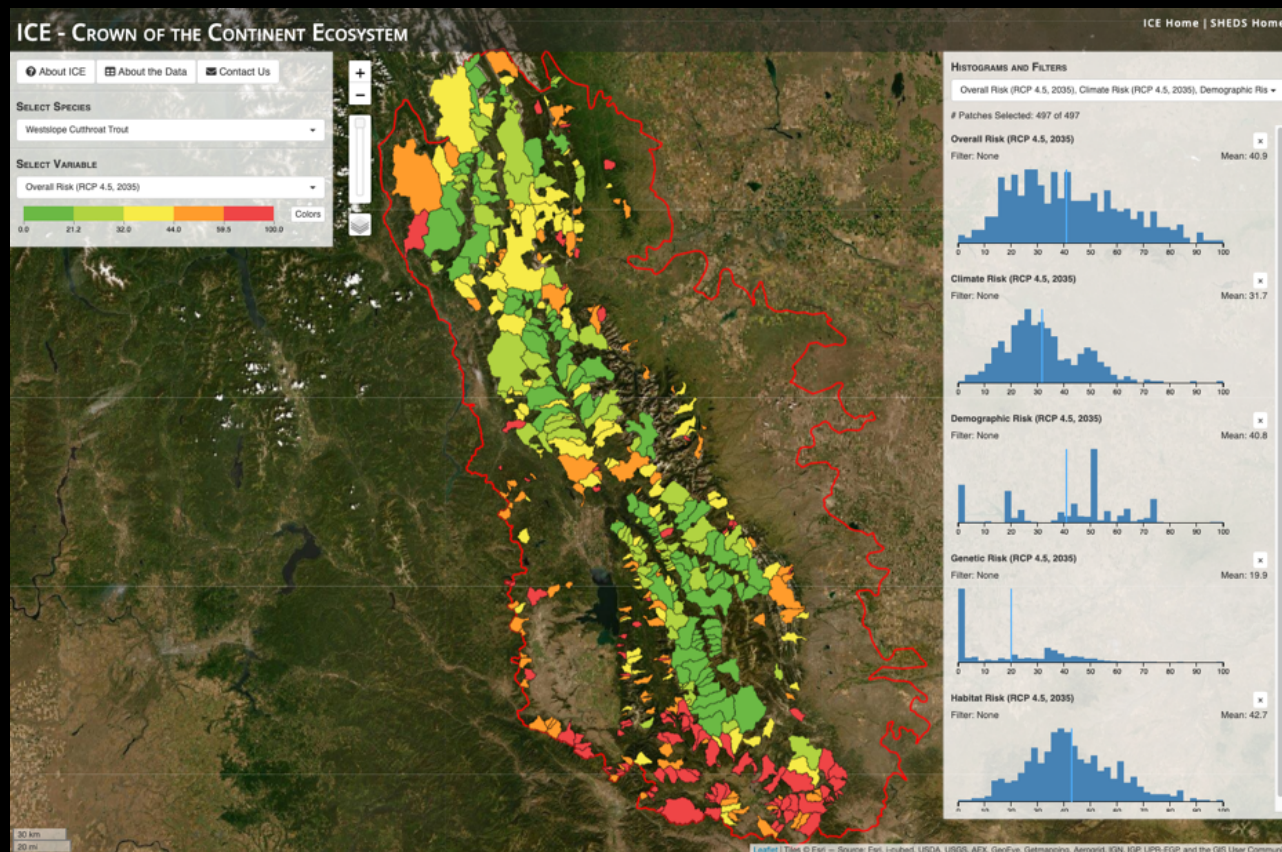
SHEDS seamlessly links datasets, models, and decision support systems into a powerful platform for gaining insight, supporting transparent decision making, and improving management of hydro-ecological resources.



<http://ecosheds.org/>

ICE | Crown of the Continent Ecosystem

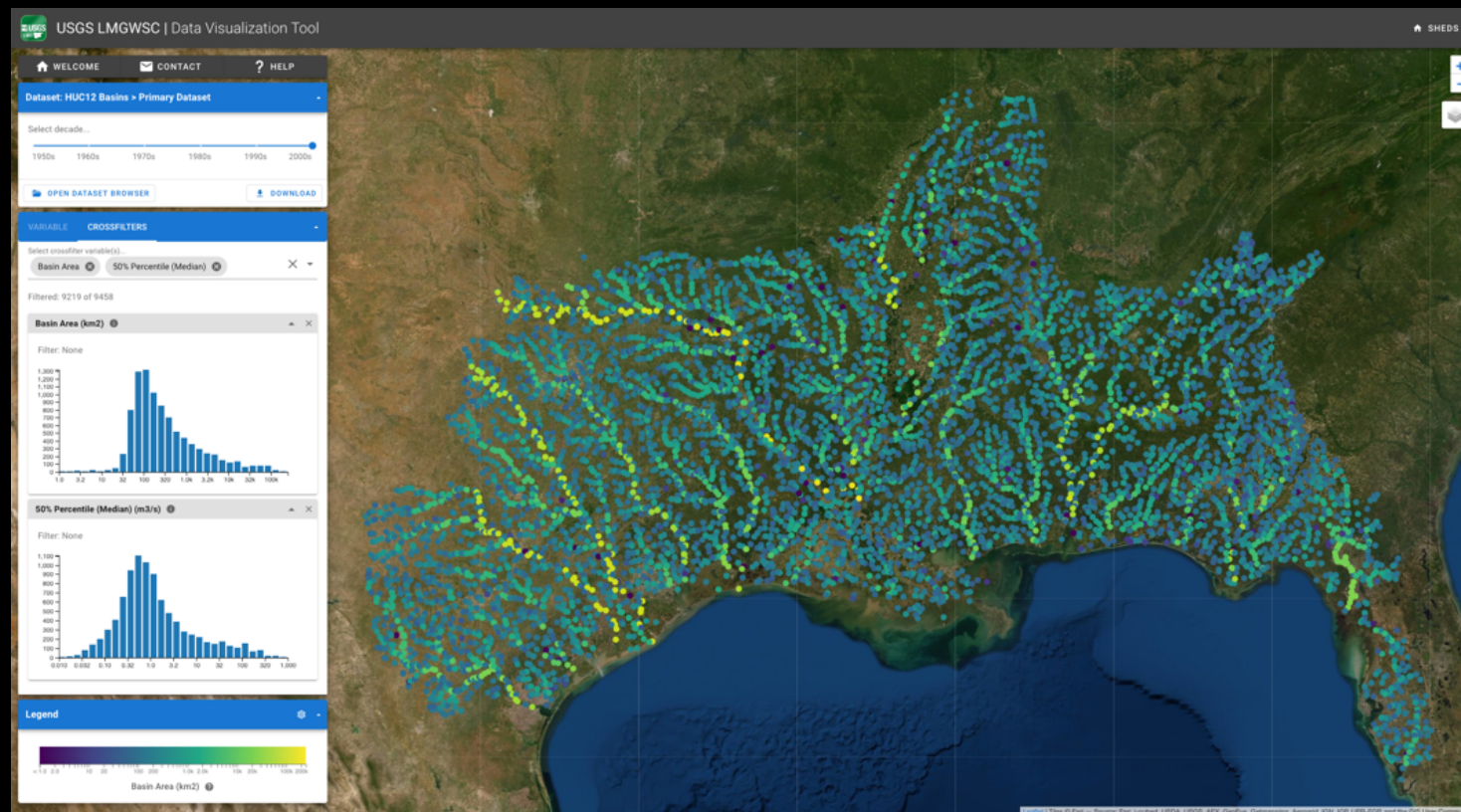
Vulnerability assessment of endangered trout species in the Northern Rocky Mountains



<http://ice.ecosheds.org/cce>

ICE | Lower-Mississippi Gulf Region

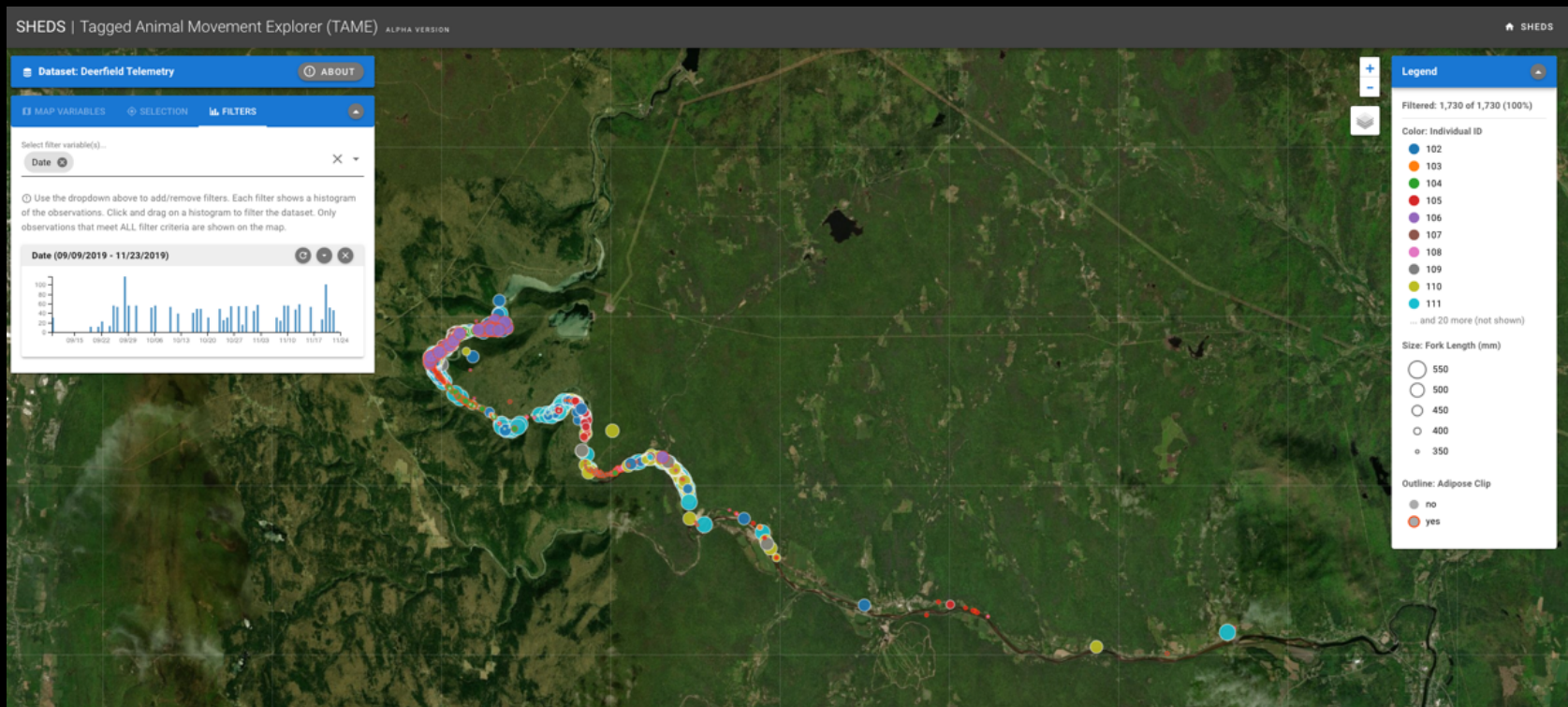
Streamflow alteration study of the Lower Mississippi-Gulf States



(coming soon)

Tagged Animal Movement Explorer (TAME)

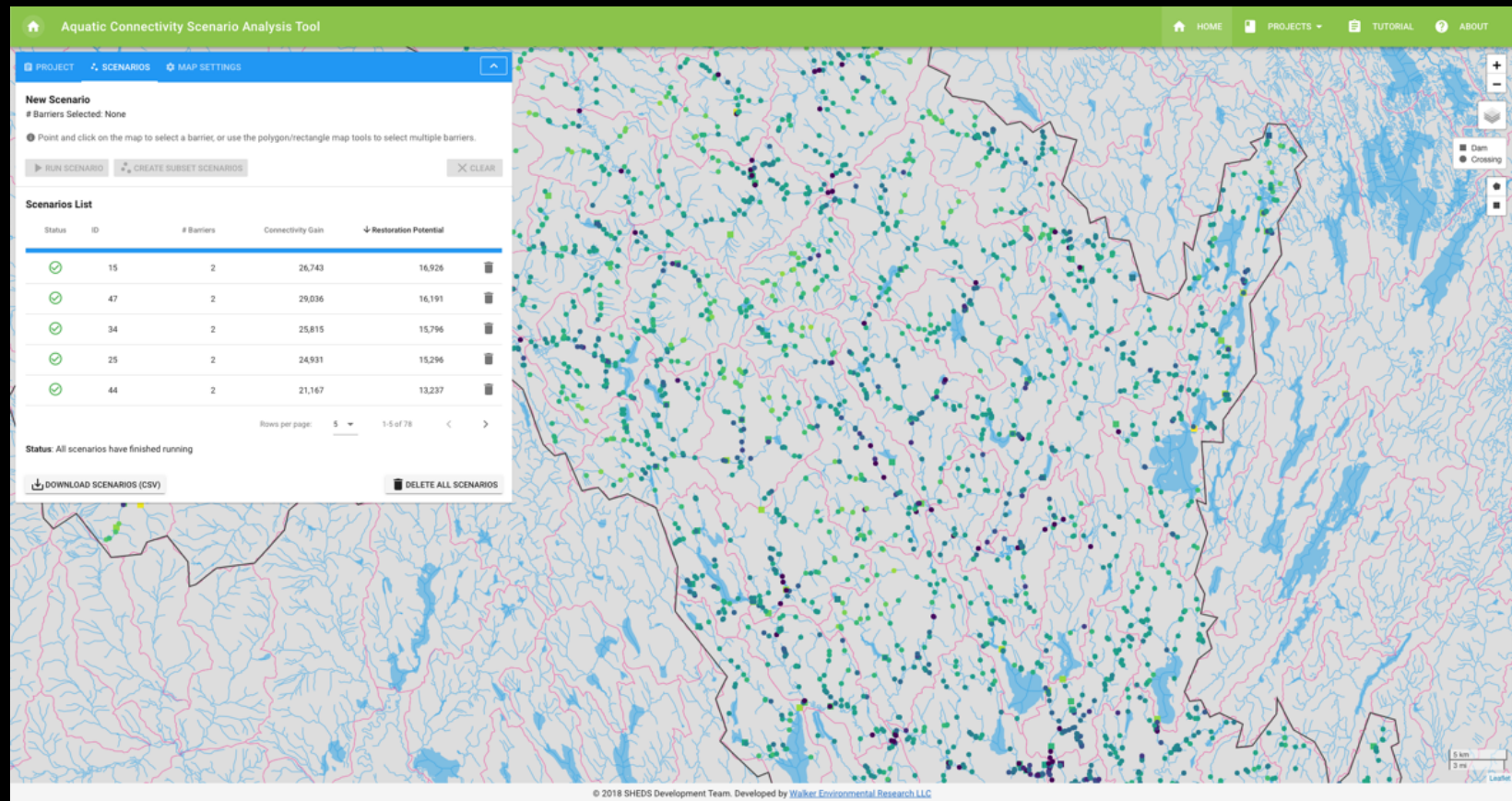
Interactive data visualization tool for exploring temporal and spatial patterns in tagging data (e.g., PIT tags)



<https://ecosheds.org/dev/tame/>

Aquatic Connectivity Scenario Analysis Tool

Interactive modeling tool for evaluating ecological benefits of culvert/dam improvements



<https://ecosheds.org/aq-connectivity-tool/>