

The North Atlantic LCC in Maryland

The North Atlantic Landscape Conservation Cooperative (LCC) is an applied science and management partnership that builds upon a long history of collaborative conservation in the North Atlantic region. It is a forum to unite agencies and stakeholders around common goals for sustaining natural and cultural resources, and to develop tools and strategies to achieve those goals in the face of threats and uncertainty.



Foundational information, assessments, and tools supported by the North Atlantic LCC offer resources for partners in Maryland to protect important species, habitats, and landscapes now and in the future. These products were designed to address specific needs expressed by partners and partnerships in Maryland, including:

- Regionally consistent habitat maps
- Prioritization tools for conservation of Eastern brook trout, piping plover, and other key species
- Conservation strategies to address sea-level rise and other climate change impacts
- Consistent approaches for assessing and prioritizing aquatic connectivity

Examples of North Atlantic LCC Science Products

AQUATIC CONSERVATION RESOURCES

Chesapeake Bay Brook Trout Assessment and Fish Habitat Decision Support Tool

A model and accompanying assessment for the Chesapeake Bay watershed that predicts brook trout occupancy, evaluates habitat quality, quantifies how human use and climate change are likely to impact both, and identifies conservation priorities at multiple scales.

Products (available now)

- Visualization tool to measure natural and human factors that influence brook trout occurrence at multiple scales
- User-defined ranking criteria for identifying priority areas
- Scenario analysis modeling in the context of future climate regimes
- Online access to Atlantic Coast Diadromous Fish Prioritization

Contacts

- Toddy Petty, West Virginia University: Todd.Petty@mail.wvu.edu
- Scott Schwenk, North Atlantic LCC: william_schwenk@fws.gov

Learn more

- [Fish Habitat Decision Support Tool](#)

North Atlantic Aquatic Connectivity Collaborative (NAACC)

A network of partners sharing resources to collectively take on the work of assessing road-stream crossings across the region, the NAACC provides a framework for prioritizing upgrades to bridges and culverts in order to improve passage for fish and wildlife while increasing resiliency to future floods.

Products (available now)

- Regional network of partners coordinating to assess and upgrade road-stream crossings
- Standard protocols and training for conducting road-stream assessments
- Regional database of road-stream crossings
- Web-based tools to prioritize upgrades based on both ecological benefits and resiliency

Contacts

- Scott Jackson, University of Massachusetts Amherst: sjackson@umass.edu
- Erik Martin, The Nature Conservancy: emartin@tnc.org
- Andrew Milliken, US Fish and Wildlife Service: andrew_milliken@fws.gov
- Scott Schwenk, North Atlantic LCC: william_schwenk@fws.gov

Learn more

- [North Atlantic LCC Projects page](#)
- [North Atlantic Aquatic Connectivity Collaborative](#)

COASTAL & MARINE CONSERVATION RESOURCES

Hurricane Sandy Resilience Projects

A suite of projects that integrate monitoring, models, and tools to examine beaches, tidal marshes, and aquatic connectivity, and guide decisions about how to conduct restoration, conservation, and management in the face of increasing storms and sea-level rise associated with climate change.

Products (partial list)

- Reports on beach and inlet modifications (e.g. shoreline hardening, beach fill, inlet opening/closing, private/public ownership) before and after the storm
- iPlover smartphone app to collect data on beach nesting birds
- Best management practices for managing beaches for shorebirds after coastal storms
- Models of salt-marsh response to sea-level rise and storms
- Monitoring and assessment of marsh restoration approaches
- Maps identifying coastal areas that will be the most ecologically resilient to climate change



Prospects for plover: For one of the Hurricane Sandy projects, scientists from Virginia Tech and USGS collaborated to develop models that predict how sea-level rise and

Contact

- Scott Schwenk, North Atlantic LCC:
william_schwenk@fws.gov

Learn more

- [North Atlantic LCC Coastal Resiliency page](#)

Marine Bird Mapping and Risk Assessment Project

This project developed models that synthesize historic marine bird data to advance understanding of how marine birds use offshore waters in the North Atlantic region, and to offer decision support for marine spatial planning and offshore energy development.

Products (available now)

- Seasonal and annual maps for 24 species of marine birds
- Report outlining a framework for marine bird habitat risk assessments in the context of offshore development
- Methodology for modeling approach

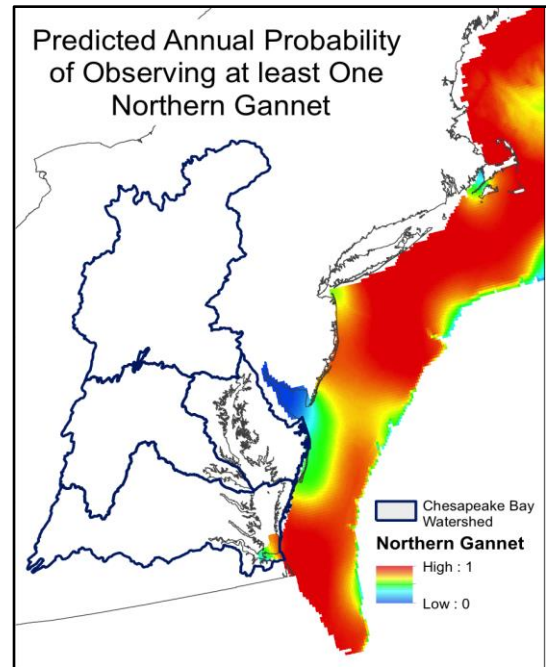
Contacts

- Beth Gardner, North Carolina State University:
bagardne@ncsu.edu
- Scott Schwenk, North Atlantic LCC:
william_schwenk@fws.gov

Learn more

- [North Atlantic LCC Projects page](#)
- [North Atlantic LCC Conservation Planning Atlas](#) (See “Marine Bird Assessment” folder)

management actions will impact piping plover nesting habitat on barrier islands.



Hotspots for marine birds: Maps for 24 species of marine birds, including Northern Gannett, provide a visual tool for resource managers and marine spatial planners to understand how these species use Maryland’s coastal waters.

LANDSCAPE CONSERVATION RESOURCES

Habitat Capability Models for Representative Species

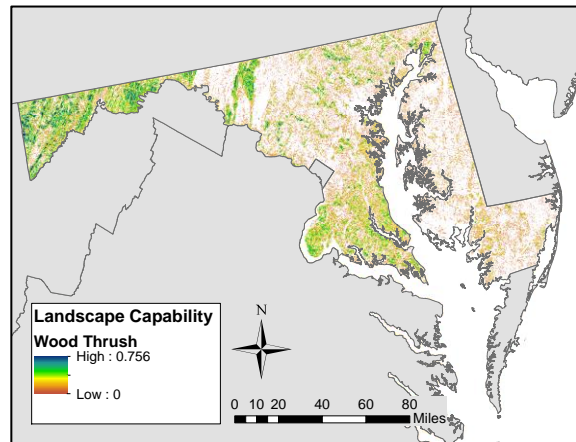
These models can be used to identify potential conservation priorities based on areas that offer high quality habitat for a set of 30 representative species, selected because they typify lifecycles and habitat requirements for a larger group of species, are sensitive to landscape changes, and can be monitored feasibly.

Products (available now)

- Models for 30 species, including saltmarsh sparrow, black bear, wood turtle, and ovenbird, which collectively represent all major ecosystem/habitat types in the region

Contacts

- Kevin McGarigal, UMass Amherst:
mccgarigalk@eco.umass.edu



Sweet spots for wood thrush: The dark blue

- Scott Schwenk, North Atlantic LCC:
william_schwenk@fws.gov

Learn more

- [North Atlantic LCC Projects page](#)
- [UMass Designing Sustainable Landscapes page](#)
- [North Atlantic LCC Conservation Planning Atlas](#)
(See “Wildlife Species Models” folder)

The Index of Ecological Integrity (IEI)

This tool identifies areas with the greatest capability to support biodiversity now and into the future by assessing the intactness and resilience to sustain key biological functions over time, relative to other sites within the same ecological system (habitat class)

Products (available now)

- Maps of the relative integrity of ecological systems at regional, state, and watershed scales (For stratified versions, contact North Atlantic LCC GIS Analyst Renee Vieira Farnsworth:
renee_vieira@fws.gov)

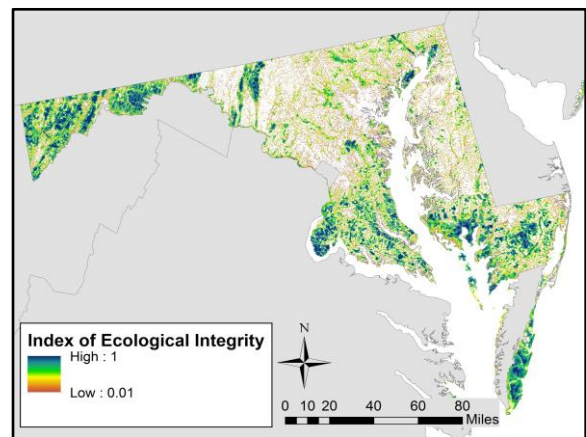
Contacts

- Kevin McGarigal, University of Massachusetts Amherst: mccgarigalk@eco.umass.edu
- Scott Schwenk, North Atlantic LCC:
wiliam_schwenk@fws.gov

Learn more

- [North Atlantic LCC Projects page](#)
- [UMass Designing Sustainable Landscapes page](#)
- [North Atlantic LCC Conservation Planning Atlas](#)

values indicate areas of relatively high habitat value for wood thrush and species with similar requirements.



Visualizing integrity: *The dark blue values indicate areas that are most likely to sustain ecological functions over time according to a suite of key metrics.*

Envision the Susquehanna

A landscape planning effort uniting partners to identify priorities and strategies for protecting the natural and cultural heritage of the Susquehanna River watershed based on regional science and community values.

Products (available now)

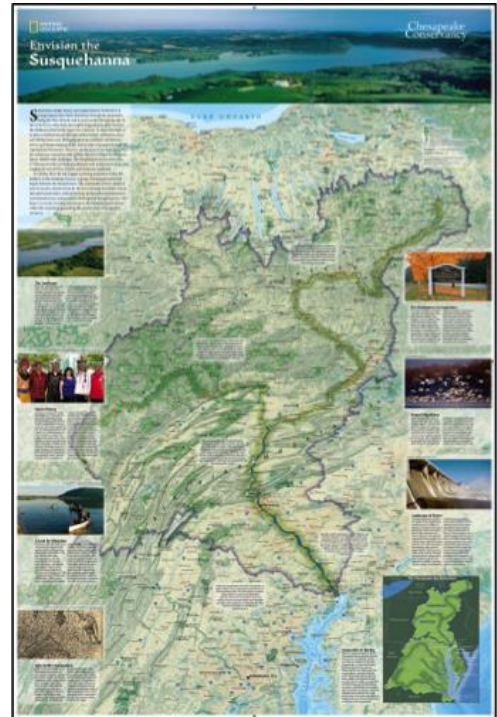
- Engagement campaign to identify community conservation needs
- Framework for delivering regional datasets and tools to conservation partners through presentations and workshops
- [National Geographic Susquehanna Watershed map](#)
- Community supported conservation science demonstration projects

Contacts

- Steve Fuller, North Atlantic LCC: sfuller71@comcast.net
- Carly Dean, Chesapeake Conservancy: cdean@chesapeakeconservancy.org

Learn more

- [Envision the Susquehanna](#)



Regional Conservation Opportunity Areas (RCOAs)

This ongoing collaborative effort has brought technical experts from 13 states representing fish and wildlife agencies, federal programs, conservation organizations, and universities together to develop a regional conservation design that lays the groundwork for unified conservation action across the entire Northeast region. The resulting resources offer voluntary guidance for partners to identify the best opportunities for conserving and restoring terrestrial, aquatic, and coastal ecosystems and the host of different species that depend on them.

Products (Version 1.0 available now)

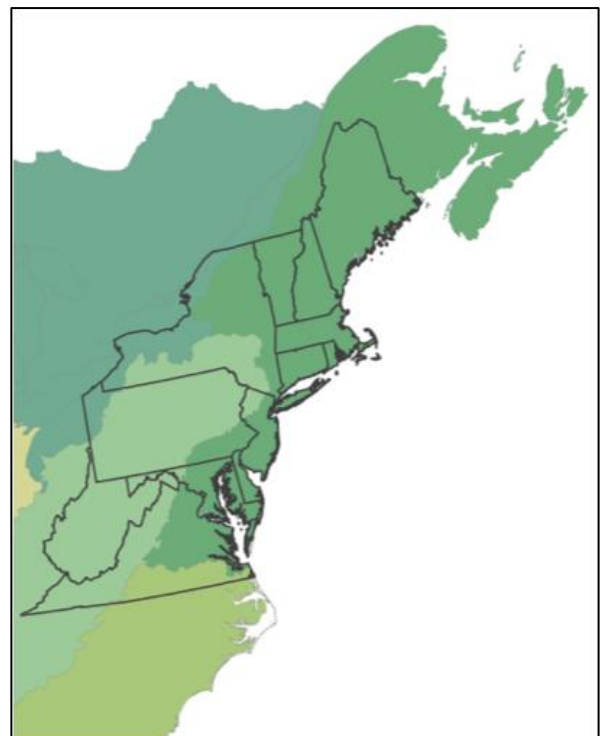
- Spatially delineated network of core areas and connectors across the Northeast
- Suite of regionally consistent datasets offering decision support through five conservation approaches: Terrestrial Core Networks, Aquatic Core Networks, Connectivity, Restoration, and Important Habitats for imperiled species and Species of Greatest Conservation Need

Contact

- Steve Fuller, North Atlantic LCC: sfuller71@comcast.net

Learn more

- [Regional Conservation Opportunity Areas Version 1.0 website](#)



One region, 13 states, thousands of conservation opportunities: Partners worked together to develop a regional conservation design that lays the groundwork for unified conservation action across the Northeast.

North Atlantic LCC Partners & Contributors in Maryland

Steering Committee

Gwen Brewer

Maryland Department of Natural Resources

Technical Committee

Lisa Havel

Atlantic Coast Fish Habitat Partnership

Darlene Finch

*National Oceanic and Atmospheric Administration,
Coastal Services Center*

Julie Devers

*U.S. Fish and Wildlife Service Maryland Fish and Wildlife
Conservation Office*

Science Delivery Team

Joanna Ogburn

Chesapeake Bay Conservancy

Darlene Finch

*National Oceanic and Atmospheric Administration,
Coastal Services Center*

Mike Slattery

U.S. Fish and Wildlife Service Chesapeake Bay Program

Susquehanna Conservation Design Project Leaders

Genevieve LaRouche

U.S. Fish and Wildlife Service Chesapeake Bay Field Office

Mike Slattery

U.S. Fish and Wildlife Service Chesapeake Bay Program

Sheila Eyler and Mike Millard

U.S. Fish and Wildlife Service Fisheries

Climate Change and Contaminants Study

Fred Pinkney

U.S. Fish and Wildlife Service Chesapeake Bay Field Office

Regional Conservation Opportunity Areas Project

Gwen Brewer and Jim Thompson

Maryland Department of Natural Resources

Jeff Allenby, Conor Phelan, and Colin Steif

Maryland Department of Natural Resources

Envision the Susquehanna

Joanna Ogburn and Jeff Allenby

Chesapeake Bay Conservancy

Hurricane Sandy Resilience Projects

Kate Skaggs

Maryland Department of Natural Resources

Matt Whitbeck

Chesapeake Marshlands National Wildlife Refuge

Darlene Finch, Katie Goldsmith, and Michelle Lenox

Mid Atlantic Council on the Ocean

Laura Mitchell

U.S. Fish and Wildlife Service National Wildlife Refuges

Sea-Level Rise Structured Decision Making Team

Bill Huslander

Assateague National Seashore

Matt Whitbeck

Chesapeake Marshlands National Wildlife Refuge

Migratory Landbird Stopover Sites in the Northeast

Deanna Dawson

U.S. Geological Survey Patuxent Wildlife Research Center

Fish Habitat Assessment and Decision Support Tool

Alan Heft

Maryland Department of Natural Resources

Sandra Davis, Jennifer Greiner, and Rich Starr

*U.S. Fish and Wildlife Service Chesapeake Bay Field
Office*

North Atlantic Aquatic Connectivity Collaborative

Jessie Thomas-Blate

American Rivers

Howard Weinburg

Chesapeake Bay Program

Nora Buck

Maryland State Highways

Ray Li and Mark Secrist

*U.S. Fish and Wildlife Service Chesapeake Bay Field
Office*

Julie Devers

*U.S. Fish and Wildlife Service Maryland Fish and Wildlife
Conservation Office*

North Atlantic Vernal Pool Data Cooperative

Lynn Davidson and Scott Smith

Maryland Department of Natural Resources

Lakes and Ponds Classification

Sherm Garrison

Maryland Department of Natural Resources

To learn more about North Atlantic LCC Science

Contact North Atlantic LCC Science Coordinator Scott Schwenk: william_schwenk@fws.gov

Explore products in the North Atlantic LCC Products database: <http://northatlanticlcc.org/products>

Explore maps and spatial data in the North Atlantic Conservation Planning Atlas: <https://nalcc.databasin.org/>