

The North Atlantic LCC in Pennsylvania

The North Atlantic Landscape Conservation Cooperative (LCC) is an applied science and management partnership that builds upon a long history of collaborative conservation in the North Atlantic region. It is a forum to unite agencies and stakeholders around common goals for sustaining natural and cultural resources, and to develop tools and strategies to achieve those goals in the face of threats and uncertainty.



Foundational information, assessments, and tools supported by the North Atlantic LCC offer resources for partners in Pennsylvania to protect important species, habitats, and landscapes now and in the future. These products were designed to address specific needs expressed by partners and partnerships in Pennsylvania, including:

- Regionally consistent habitat maps
- Regional context and conservation opportunity areas for State Wildlife Action Plan updates
- Prioritization tools for conservation of Eastern brook trout, and other key species
- Conservation strategies to address climate change impacts
- Consistent approaches for assessing and prioritizing aquatic connectivity

Examples of North Atlantic LCC Science Products

AQUATIC CONSERVATION RESOURCES

Chesapeake Bay Brook Trout Assessment and Fish Habitat Decision Support Tool

A model and accompanying assessment for the Chesapeake Bay watershed that predicts brook trout occupancy, evaluates habitat quality, quantifies how human use and climate change are likely to impact both, and identifies conservation priorities at multiple scales.

Products (available now)

- Visualization tool to assess natural & human factors that influence brook trout occurrence at multiple scales
- User-defined ranking criteria for identifying priority areas
- Scenario analysis modeling in the context of future climate regimes
- Online access to Atlantic Coast Diadromous Fish Prioritization

Contacts

- Toddy Petty, West Virginia University: Todd.Petty@mail.wvu.edu
- Scott Schwenk, North Atlantic LCC: william_schwenk@fws.gov

[Learn more](#)

- [Fish Habitat Decision Support Tool](#)

North Atlantic Aquatic Connectivity Collaborative (NAACC)

A network of partners sharing resources to collectively take on the work of assessing road-stream crossings across the region, the NAACC provides a framework for prioritizing upgrades to bridges and culverts in order to improve passage for fish and wildlife while increasing resiliency to future floods.

Products (available now)

- Regional network of partners coordinating to assess and upgrade road-stream crossings
- Standard protocols and training for conducting road-stream assessments
- Regional database of road-stream crossings
- Web-based tools to prioritize upgrades based on both ecological benefits and resiliency

Contacts

- Scott Jackson, University of Massachusetts Amherst: sjackson@umass.edu
- Erik Martin, The Nature Conservancy: emartin@tnc.org
- Andrew Milliken, US Fish and Wildlife Service: andrew_milliken@fws.gov
- Scott Schwenk, North Atlantic LCC: william_schwenk@fws.gov

Learn more

- [North Atlantic LCC Projects page](#)
- [North Atlantic Aquatic Connectivity Collaborative](#)

North Atlantic Vernal Pool Cooperative

A collaborative effort to create a comprehensive, spatial database of vernal pool locations in the Northeast and Mid-Atlantic regions with input from practitioners in order to inform conservation measures and future surveys.

Products (available now)

- Secure GIS dataset of currently mapped vernal pool locations in the North Atlantic LCC region, including potential and verified pools
- Overview of vernal pool mapping and certification approaches employed in the region
- Methodology for identifying potential vernal pool sites using LiDAR and OBIA technology

Contacts

- Steve Faccio, Vermont Center for Ecostudies: sfaccio@vtecostudies.org
- Scott Schwenk, North Atlantic LCC: william_schwenk@fws.gov

Learn more

- [North Atlantic LCC Projects page](#)
- [Vermont Center for EcoStudies](#)

LANDSCAPE CONSERVATION RESOURCES

Habitat Capability Models for Representative Species

These models can be used to identify potential conservation priorities based on areas that offer high quality habitat for a set of 30 representative species, selected because they typify lifecycles and habitat requirements for a larger group of species, are sensitive to landscape changes, and can be monitored feasibly.

Products (available now)

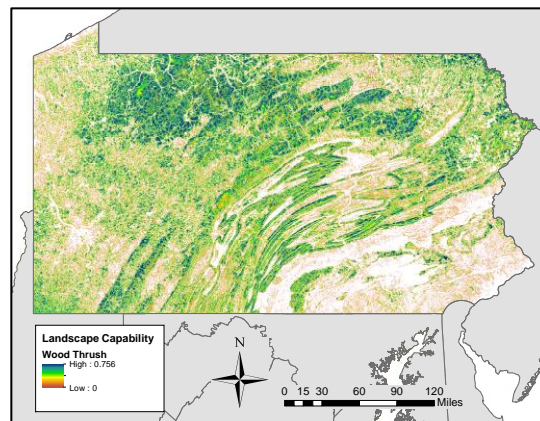
- Models for 30 species, including black bear, wood turtle, and ovenbird, which collectively represent all major ecosystem/habitat types in the region

Contacts

- Kevin McGarigal, UMass Amherst: mccgarigalk@eco.umass.edu
- Scott Schwenk, North Atlantic LCC: william_schwenk@fws.gov

Learn more

- [North Atlantic LCC Projects page](#)
- [UMass Designing Sustainable Landscapes page](#)
- [North Atlantic LCC Conservation Planning Atlas](#) (See “Wildlife Species Models” folder)



Sweet spots for wood thrush: The dark blue values indicate areas of relatively high habitat value for wood thrush and species with similar requirements.

The Index of Ecological Integrity (IEI)

This tool identifies areas with the greatest capability to support biodiversity now and into the future by assessing the intactness and resilience to sustain key biological functions over time, relative to other sites within the same ecological system (habitat class).

Products (available now)

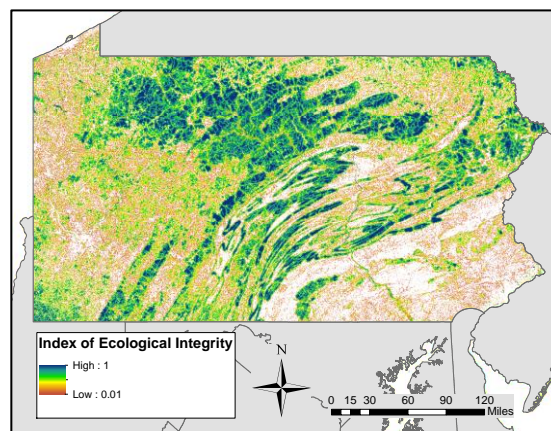
- Maps of the relative integrity of ecological systems at regional, state, and watershed scales (For stratified versions, contact North Atlantic LCC GIS Analyst Renee Vieira Farnsworth: renee_vieira@fws.gov)

Contacts

- Kevin McGarigal, University of Massachusetts Amherst: mccgarigalk@eco.umass.edu
- Scott Schwenk, North Atlantic LCC: wiliam_schwenk@fws.gov

Learn more

- [North Atlantic LCC Projects page](#)
- [UMass Designing Sustainable Landscapes page](#)
- [North Atlantic LCC Conservation Planning Atlas](#)



Visualizing integrity: The dark blue values indicate areas that are most likely to sustain ecological functions over time according to a suite of key metrics.

Regional Conservation Opportunity Areas (RCOAs)

This ongoing collaborative effort has brought technical experts from 13 states representing fish and wildlife agencies, federal programs, conservation organizations, and universities together to develop a regional conservation design that lays the groundwork for unified conservation action across the entire Northeast region. The resulting resources offer voluntary guidance for partners to identify the best opportunities for conserving and restoring terrestrial, aquatic, and coastal ecosystems and the host of different species that

Products (Version 1.0 available now)

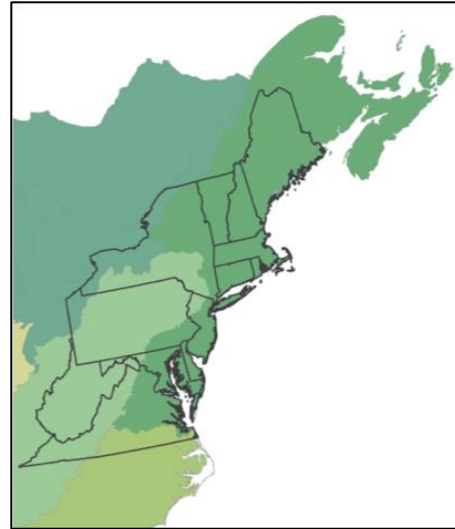
- Spatially delineated network of core areas and connectors across the Northeast
- Suite of regionally consistent datasets offering decision support through five conservation approaches: Terrestrial Core Networks, Aquatic Core Networks, Connectivity, Restoration, and Important Habitats for imperiled species and Species of Greatest Conservation Need

Contact

- Steve Fuller, North Atlantic LCC:
sfuller71@comcast.net

Learn more

- [Regional Conservation Opportunity Areas Version 1.0 website](#)



One region, 13 states, thousands of opportunities:
Partners worked together to develop a regional conservation design that lays the groundwork for unified conservation action across the Northeast.

North Atlantic LCC Partners & Contributors in Pennsylvania

Steering Committee

Diana Day

Pennsylvania Fish and Boat Commission

Matt Hough

Pennsylvania Game Commission

Bill Jenkins

Environmental Protection Agency

Technical Committee

Diana Day

Pennsylvania Fish and Boat Commission

Regional Conservation Opportunity Areas Project

Cathy Haffner, Chris Tracey and Mary Walsh

Pennsylvania Natural Heritage Program

Fish Habitat Decision Support Tool

Jason Detar

Pennsylvania Fish and Boat Commission

Ty Wagner

Penn State University

Hurricane Sandy Resilience Projects

Tracy Monegan Rice

Terwilliger Consulting

North Atlantic Aquatic Connectivity Collaborative

Eric Chapman and Eli Long

Western Pennsylvania Conservancy

Su Fanok and Brad Maurer

The Nature Conservancy

Chuck Keepports and Nathan Welker

U.S. Forest Service Allegheny National Forest

Benjamin Lorson, Tom Shervinskie, and Dave Urban

Pennsylvania Fish and Boat Commission

Amy Wolfe

Trout Unlimited

Lakes and Ponds Classification

David Arnold

Pennsylvania Fish and Boat Commission

Barbara Lathrop

Pennsylvania Department of Environmental Protection

To learn more about North Atlantic LCC Science

Contact North Atlantic LCC Science Coordinator Scott Schwenk: william_schwenk@fws.gov

Explore products in the North Atlantic LCC Products database: <http://northatlanticlcc.org/products>

Explore maps and spatial data in the North Atlantic Conservation Planning Atlas: <https://nalcc.databasin.org/>