

The North Atlantic LCC in Virginia

The North Atlantic Landscape Conservation Cooperative (LCC) is an applied science and management partnership that builds upon a long history of collaborative conservation in the North Atlantic region. It is a forum to unite agencies and stakeholders around common goals for sustaining natural and cultural resources, and to develop tools and strategies to achieve those goals in the face of threats and uncertainty.



Foundational information, assessments, and tools supported by the North Atlantic LCC offer resources for partners in Virginia to protect important species, habitats, and landscapes now and in the future. These products were designed to address specific needs expressed by partners and partnerships in Virginia, including:

- Regionally consistent habitat maps
- Regional context and conservation opportunity areas for State Wildlife Action Plan updates
- Prioritization tools for conservation of eastern brook trout, and other key species
- Conservation strategies to address sea level rise and other climate change impacts
- Consistent approaches for assessing and prioritizing aquatic connectivity

Examples of North Atlantic LCC Science Products

AQUATIC CONSERVATION RESOURCES

Chesapeake Bay Brook Trout Assessment and Fish Habitat Decision Support Tool

A model and accompanying assessment for the Chesapeake Bay watershed that predicts brook trout occupancy, evaluates habitat quality, quantifies how human use and climate change are likely to impact both, and identifies conservation priorities at multiple scales.

Products (available now)

- Visualization tool to measure natural and human factors that influence brook trout occurrence at multiple scales
- User-defined ranking criteria for identifying priority areas
- Scenario analysis modeling in the context of future climate regimes
- Online access to Atlantic Coast Diadromous Fish Prioritization

Contacts

- Toddy Petty, West Virginia University: Todd.Petty@mail.wvu.edu
- Scott Schwenk, North Atlantic LCC: william_schwenk@fws.gov

Learn more

- [Fish Habitat Decision Support Tool](#)

North Atlantic Aquatic Connectivity Collaborative (NAACC)

A network of partners sharing resources to collectively take on the work of assessing road-stream crossings across the region, the NAACC provides a framework for prioritizing upgrades to bridges and culverts in order to improve passage for fish and wildlife while increasing resiliency to future floods.

Products (available now)

- Regional network of partners coordinating to assess and upgrade road-stream crossings
- Standard protocols and training for conducting road-stream assessments
- Regional database of road-stream crossings
- Web-based tools to prioritize upgrades based on both ecological benefits and resiliency

Contacts

- Scott Jackson, University of Massachusetts Amherst: sjackson@umass.edu
- Erik Martin, The Nature Conservancy: emartin@tnc.org
- Andrew Milliken, US Fish and Wildlife Service: andrew_milliken@fws.gov
- Scott Schwenk, North Atlantic LCC: william_schwenk@fws.gov

Learn more

- [North Atlantic LCC Projects page](#)
- [North Atlantic Aquatic Connectivity Collaborative](#)

COASTAL & MARINE CONSERVATION RESOURCES

Hurricane Sandy Resilience Projects

A suite of projects that integrate monitoring, models, and tools to examine beaches, tidal marshes, and aquatic connectivity, and guide decisions about how to conduct restoration, conservation, and management in the face of increasing storms and sea-level rise associated with climate change.

Products (partial list)

- Reports on beach and inlet modifications (e.g. shoreline hardening, beach fill, inlet opening/closing, private/public ownership) before and after the storm
- iPlover smartphone app to collect data on beach nesting birds
- Best management practices for managing beaches for shorebirds after coastal storms
- Models of salt-marsh response to sea level rise and storms
- Monitoring and assessment of marsh restoration approaches
- Maps identifying coastal areas that will be the most ecologically resilient to climate change

Contact

- Scott Schwenk, North Atlantic LCC: william_schwenk@fws.gov

Learn more

- [North Atlantic LCC Coastal Resiliency page](#)



Prospects for plover: For one of the Hurricane Sandy projects, scientists from Virginia Tech and the U.S. Geological Survey collaborated to develop models that predict how sea-level rise and management actions will impact piping plover nesting habitat on barrier islands.

Marine Bird Mapping and Risk Assessment Project

This project developed models that synthesize historic marine bird data to advance understanding of how marine birds use offshore waters in the North Atlantic region, and to offer decision support for marine spatial planning and offshore energy development.

Products (available now)

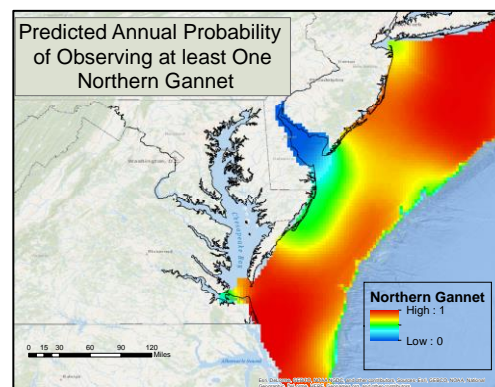
- Seasonal and annual maps for 24 species of marine birds
- Report outlining a framework for marine bird habitat risk assessments in the context of offshore development
- Methodology for modeling approach

Contacts

- Beth Gardner, North Carolina State University: bagardne@ncsu.edu
- Scott Schwenk, North Atlantic LCC: william_schwenk@fws.gov

Learn more

- [North Atlantic LCC Projects page](#)
- [North Atlantic LCC Conservation Planning Atlas](#) (See “Marine Bird Assessment” folder)



Hotspots for marine birds: Maps for 24 marine bird species, including Northern Gannett, allow resource managers and marine spatial planners to visualize how these birds use Virginia’s coastal waters.

LANDSCAPE CONSERVATION RESOURCES

Habitat Capability Models for Representative Species

These models can be used to identify potential conservation priorities based on areas that offer high quality habitat for a set of 30 representative species, selected because they typify lifecycles and habitat requirements for a larger group of species, are sensitive to landscape changes, and can be monitored feasibly.

Products (available now)

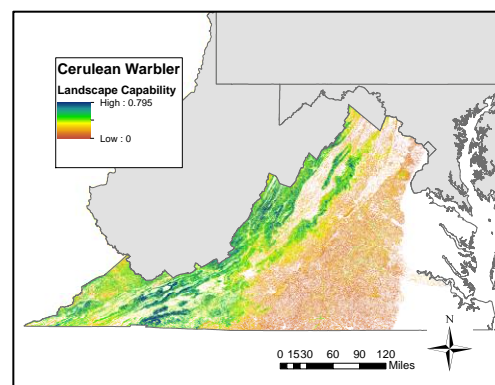
- Models for 30 species, including salt marsh sparrow, black bear, wood turtle, and ovenbird, which collectively represent all major ecosystem/habitat types in the region

Contact

- Kevin McGarigal, UMass Amherst: mccgarigalk@eco.umass.edu
- Scott Schwenk, North Atlantic LCC: william_schwenk@fws.gov

Learn more

- [North Atlantic LCC Projects page](#)
- [UMass Designing Sustainable Landscapes page](#)
- [North Atlantic LCC Conservation Planning Atlas](#) (See “Wildlife Species Models” folder)



Sweet spots for Cerulean Warbler: The dark blue values indicate areas of relatively high habitat value for Cerulean Warbler and species with similar requirements.

The Index of Ecological Integrity (IEI)

This tool identifies areas with the greatest capability to support biodiversity now and into the future by assessing the intactness and resilience to sustain key biological functions over time, relative to other sites within the same ecological system (habitat class).

Products (available now)

- Maps of the relative integrity of ecological systems at regional, state, and watershed scales (For stratified versions, contact North Atlantic LCC GIS Analyst Renee Vieira Farnsworth: renee_vieira@fws.gov)

Contacts

- Kevin McGarigal, University of Massachusetts Amherst: mccgarigalk@eco.umass.edu
- Scott Schwenk, North Atlantic LCC: wiliam_schwenk@fws.gov

Learn more

- [North Atlantic LCC Projects page](#)
- [UMass Designing Sustainable Landscapes page](#)
- [North Atlantic LCC Conservation Planning Atlas](#)

Regional Conservation Opportunity Areas (RCOAs)

This ongoing collaborative effort has brought technical experts from 13 states representing fish and wildlife agencies, federal programs, conservation organizations, and universities together to develop a regional conservation design that lays the groundwork for unified conservation action across the entire Northeast region. The resulting resources offer voluntary guidance for partners to identify the best opportunities for conserving and restoring terrestrial, aquatic, and coastal ecosystems and the host of different species that depend on them.

Products (Version 1.0 available now)

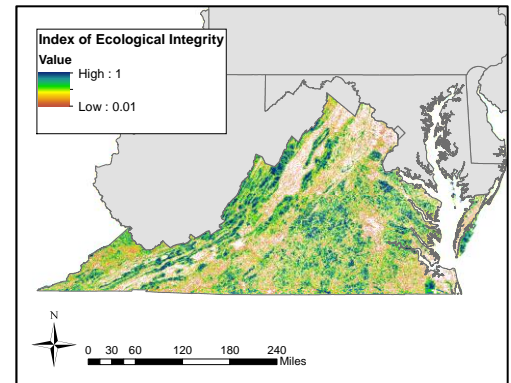
- Spatially delineated network of core areas and connectors across the Northeast
- Suite of regionally consistent datasets offering decision support through five conservation approaches: Terrestrial Core Networks, Aquatic Core Networks, Connectivity, Restoration, and Important Habitats for imperiled species and Species of Greatest Conservation Need

Contact

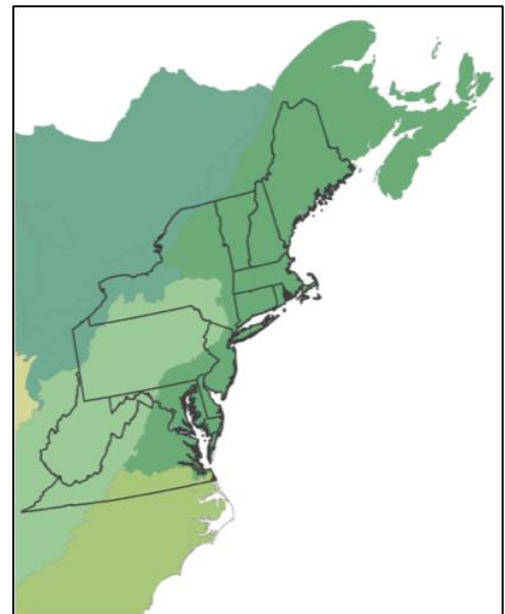
- Steve Fuller, North Atlantic LCC: sfuller71@comcast.net

Learn more

- [Regional Conservation Opportunity Areas Version 1.0 website](#)



Visualizing integrity: The dark blue values indicate areas that are most likely to sustain ecological functions over time according to a suite of key metrics.



One region, 13 states, thousands of conservation opportunities: Partners worked together to develop a regional conservation design that lays the groundwork for unified conservation action across the Northeast.

North Atlantic LCC Partners & Contributors in Virginia

Steering Committee

Becky Gwynn

Virginia Department of Game and Inland Fisheries

Technical Committee

Lisa Havel

Atlantic States Marine Fisheries Commission

Science Delivery Team

Becky Gwynn

Virginia Department of Game and Inland Fisheries

Regional Conservation Opportunity Areas Project

Chris Burkett

Virginia Department of Game and Inland Fisheries

Elizabeth Crisfield and Karen Terwilliger

Terwilliger Consulting, Inc.

Gregory Garman

Center for Environmental Studies, Virginia Commonwealth University

Bridget Costanzo

USDA Natural Resource Conservation Service

Braven Beaty

The Nature Conservancy

Updating Coastal National Wetlands Inventory

Scott Klopfer

Conservation Management Institute, Virginia Tech

Hurricane Sandy Resilience Projects

Daniel H. Catlin, James Fraser, Sara Ziegler, and Sarah Karpanty

Virginia Tech

Shep Moon

Virginia Department of Environmental Quality

Karen Terwilliger

Terwilliger Consulting, Inc.

Climate Change and Contaminants Team

Jess Jones

U.S. Fish and Wildlife Service, Virginia Field Office

Fred Pinkney

U.S. Fish and Wildlife Service, Chesapeake Bay Field Office

Migratory Landbird Stopover Sites in the Northeast

Ruth Boettcher

Virginia Department of Game and Inland Fisheries

Laura McKay

Virginia Department of Environmental Quality

Eric Walters

Old Dominion University

North Atlantic Aquatic Connectivity Collaborative

Karen Horodysky and Alan Weaver

Virginia Department of Game and Inland Fisheries

Nina O'Malley

Virginia Department of Environmental Quality

Kevin Anderson and Seth Coffman

Trout Unlimited

Pat Calvert

James River Association

Heather Richards and Carolyn Sedgwick

Piedmont Environmental Council

Jessie Thomas-Blate

American Rivers

North Atlantic Vernal Pool Cooperative

Michael Hayslett

Sweet Briar College

Brook Trout Assessment and Tool

Brad Fink and Steve Reeser

Virginia Department of Game and Inland Fisheries

To learn more about North Atlantic LCC Science

Contact North Atlantic LCC Science Coordinator Scott Schwenk: william_schwenk@fws.gov

Explore products in the North Atlantic LCC Products database: <http://northatlanticlcc.org/products>

Explore maps and spatial data in the North Atlantic Conservation Planning Atlas: <https://nalcc.databasin.org/>