

# Salt Marsh Advancement Zone Assessments in Connecticut



# Coastal Resilience Program

- Objective – lend a helping hand to communities and ecosystems to safely accommodate hazards and change



**Awareness**



**Risk**

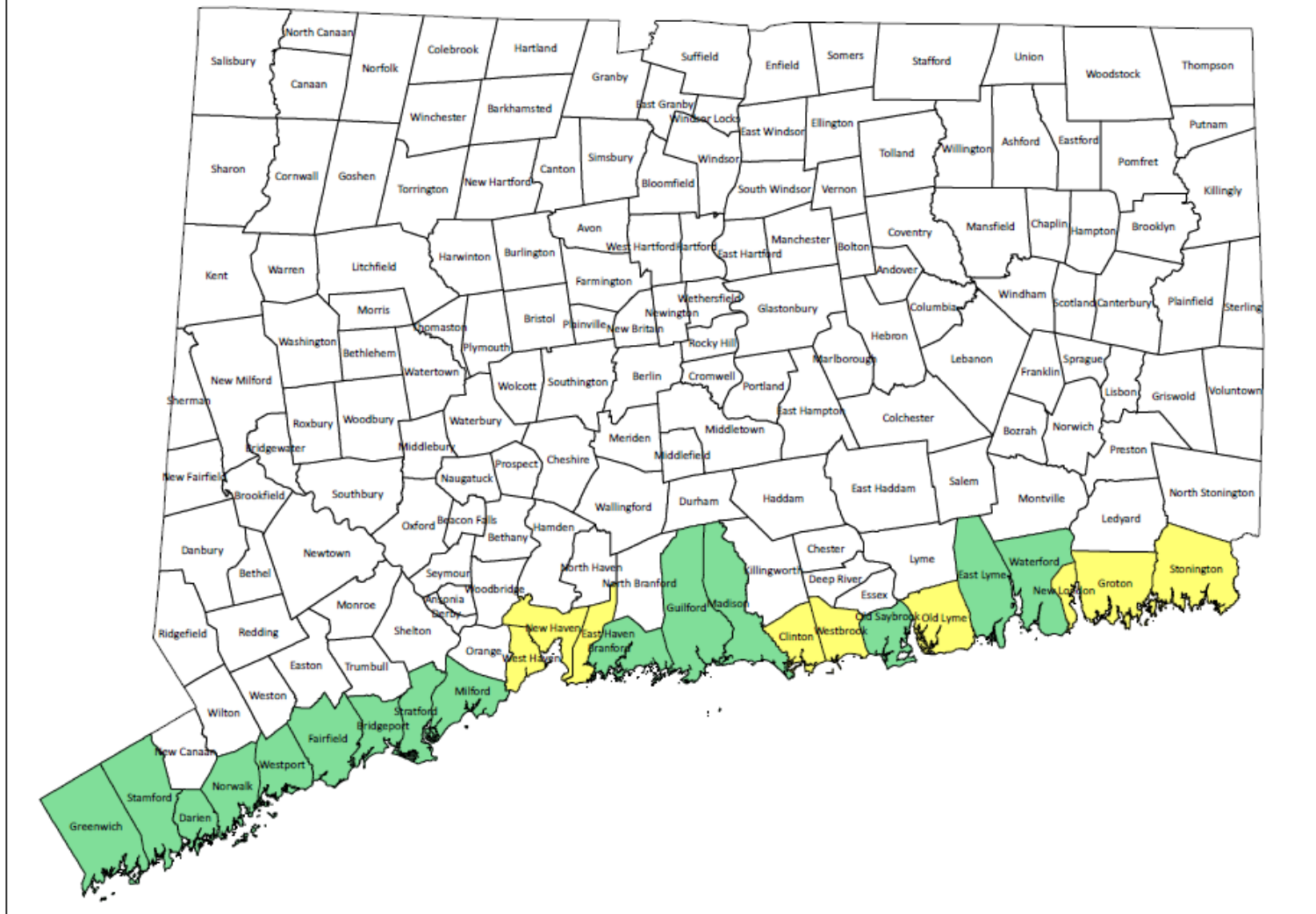


**Choices**



**Action**

## The Nature Conservancy's Coastal Resilience Program Salt Marsh Advancement Zone Assessments



# Which locations are likely to accommodate salt marsh advancement?





# Suitable vs. unsuitable areas

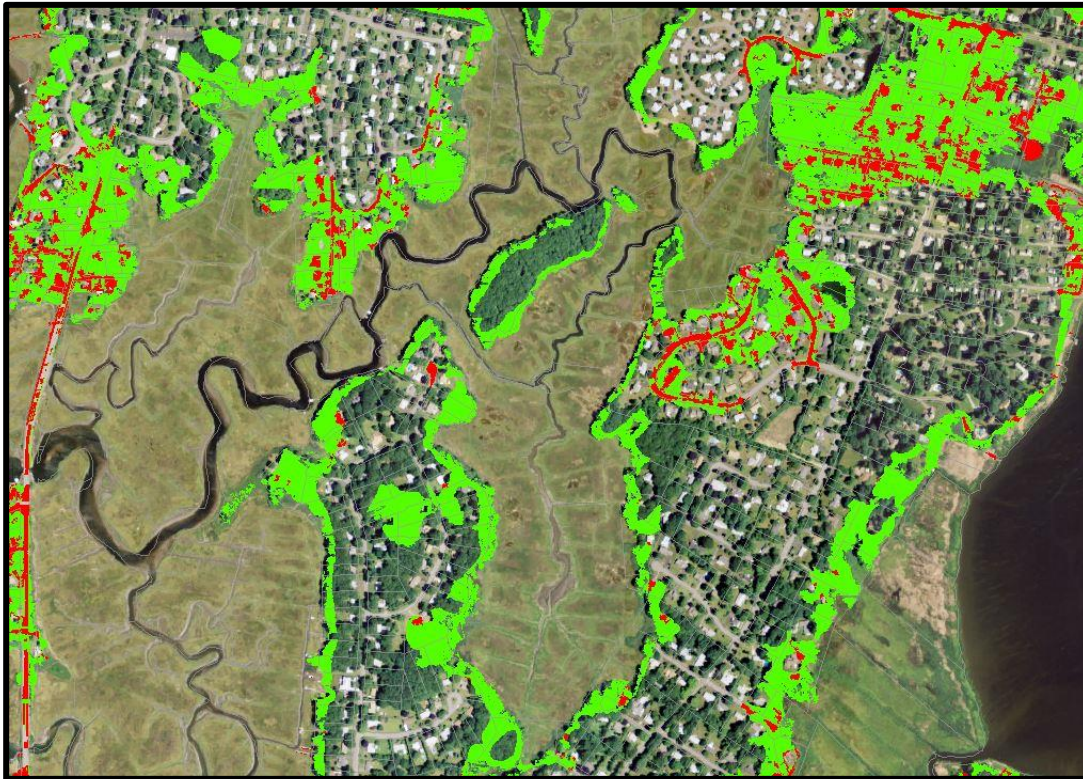


Image from Old Saybrook report

Total Marsh Advancement by 2080s		
Marsh Adv	Acres	Percent (%)
Yes	825.1	79.2
No	216.8	20.8
Total	1,041.9	100.0

# Which unprotected parcels provide the most salt marsh advancement potential?





# Marsh advancement on unprotected parcels

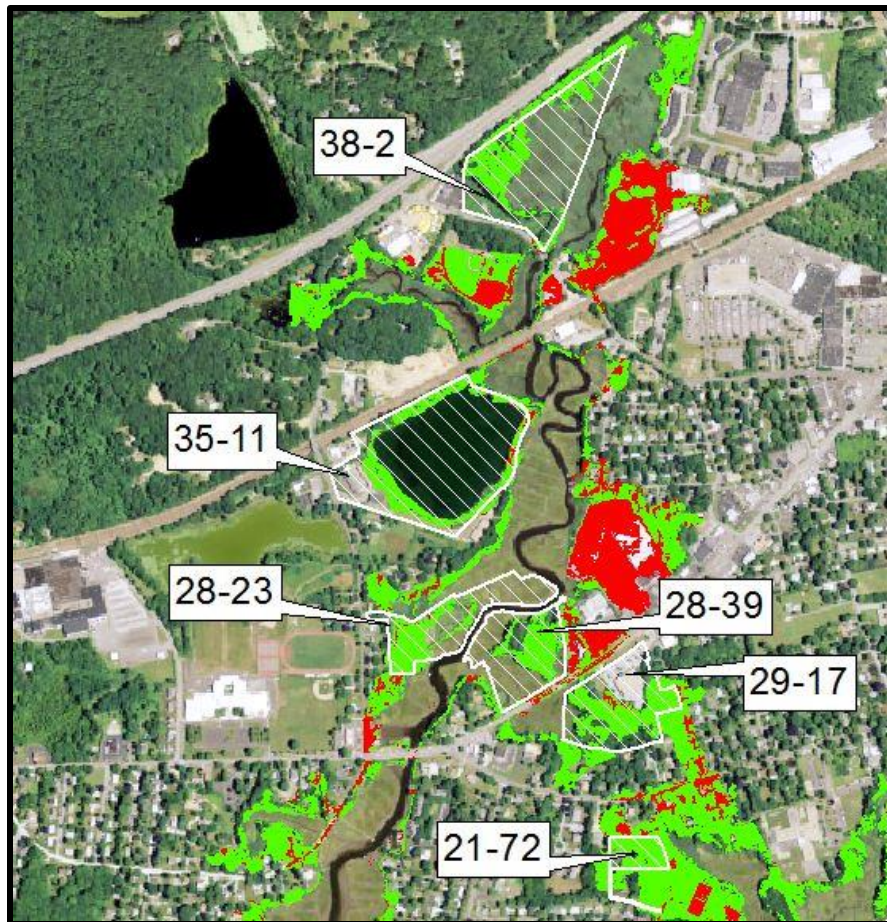
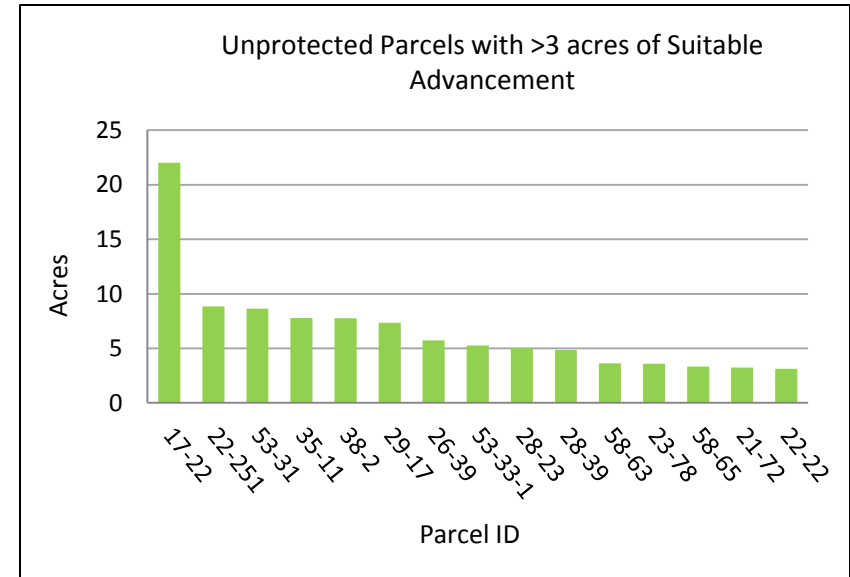


Image from Old Saybrook report



# Critical parcels for future advancement

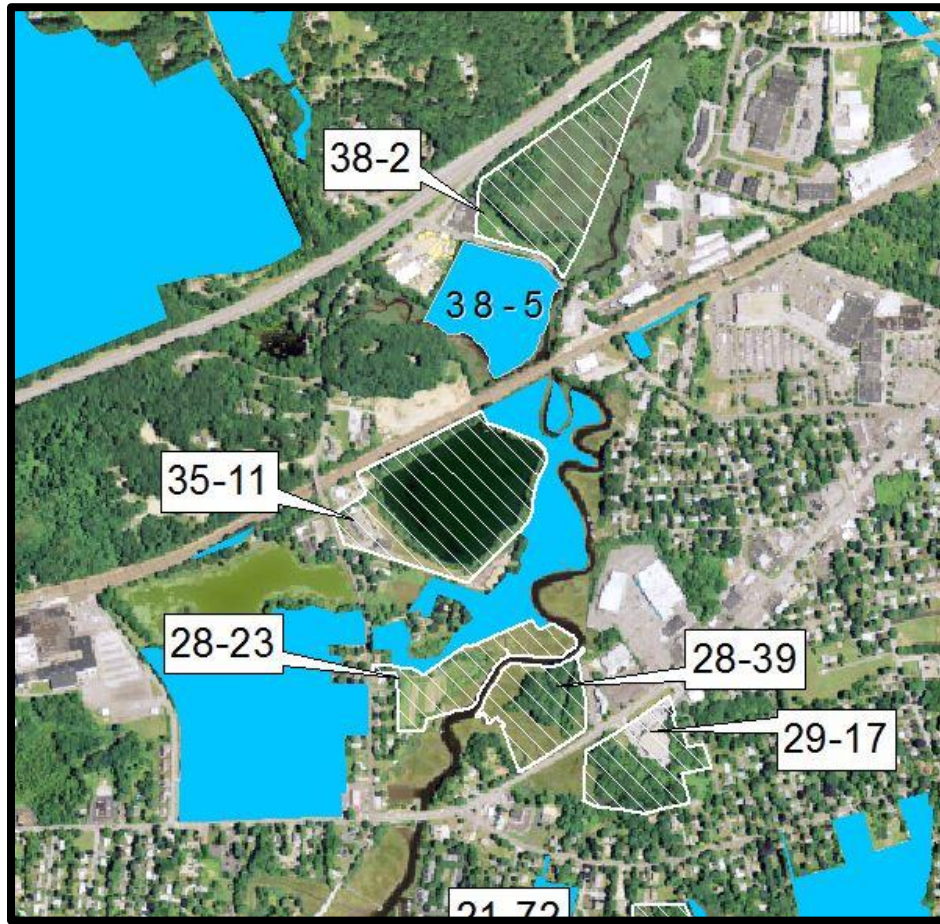


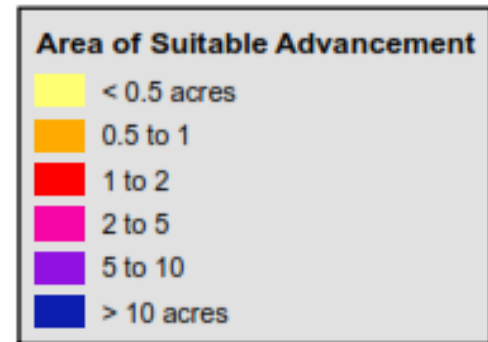
Image from Old Saybrook report

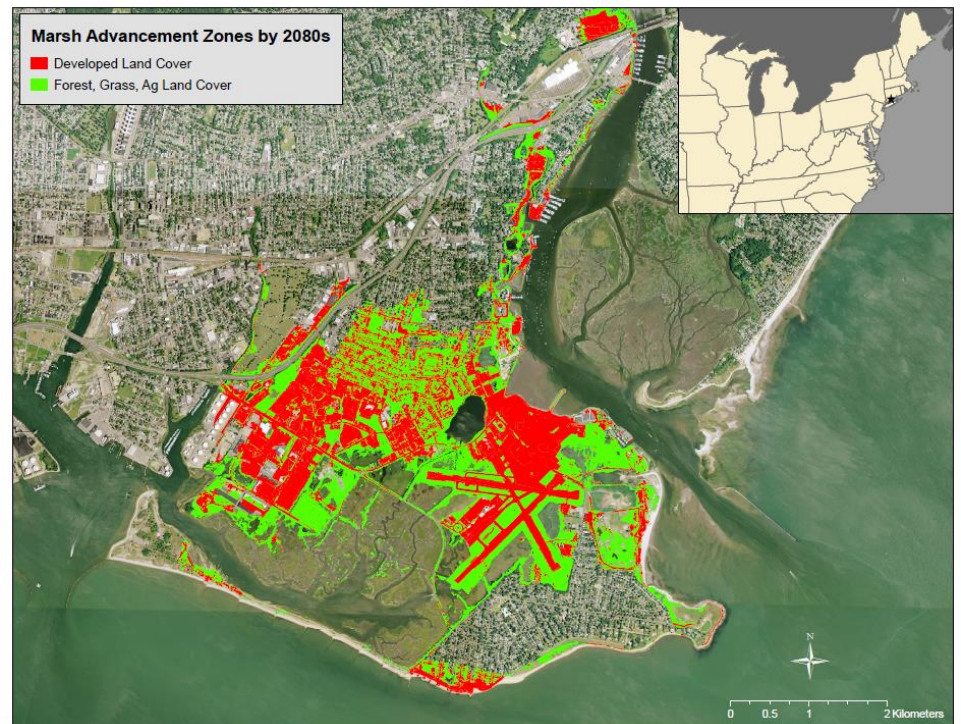
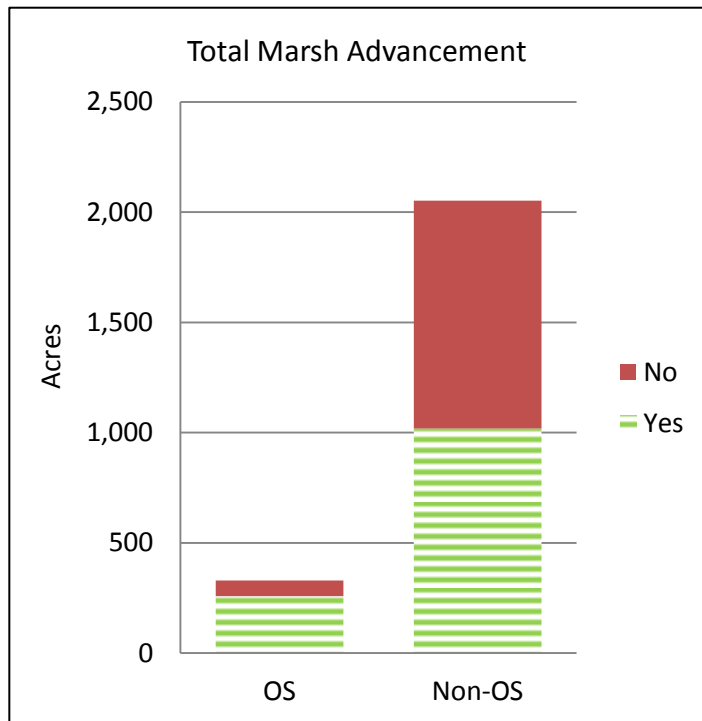


# Marsh advancement by parcel



Image from Old Saybrook report





Total Marsh Advancement			
Parcel type	Yes	No	Total
OS	259.0	71.4	330.4
Non-OS	1,019.1	1,034.0	2,053.1
Total	1,278.1	1,105.4	2,383.5

# Thank you!



Adam Whelchel  
[awhelchel@tnc.org](mailto:awhelchel@tnc.org)

