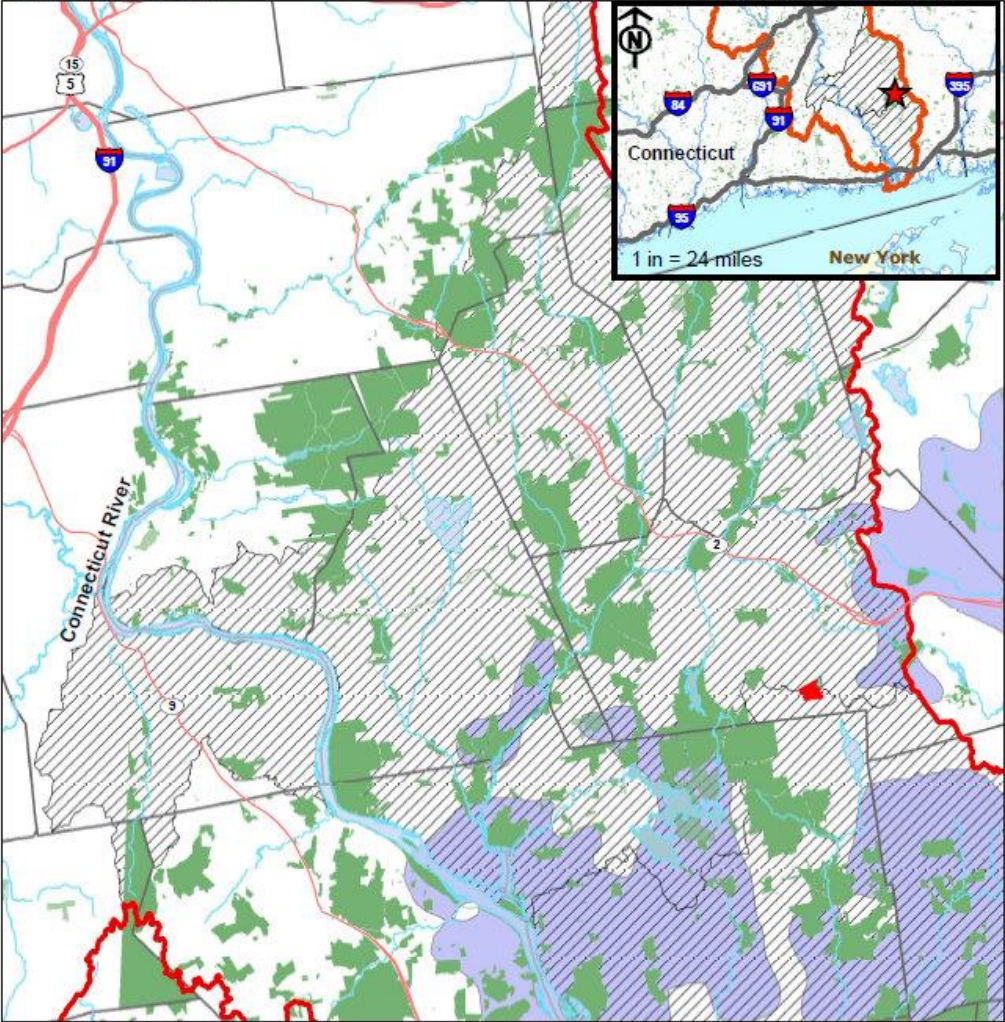


Implementing the LCD

Colchester Land Trust
 Bulkeley Hill Acquisition
 Colchester, CT

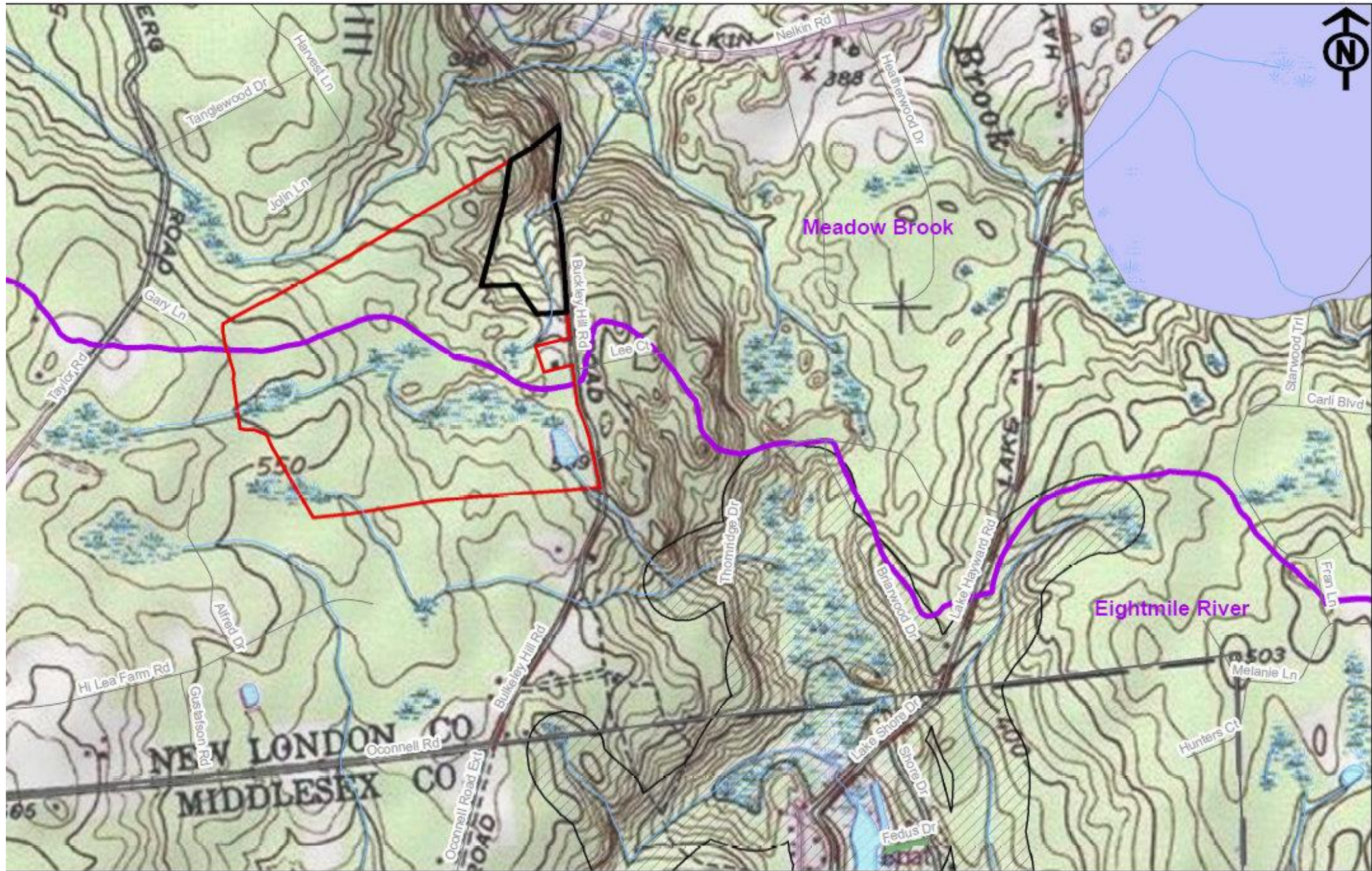


Regional Location Map



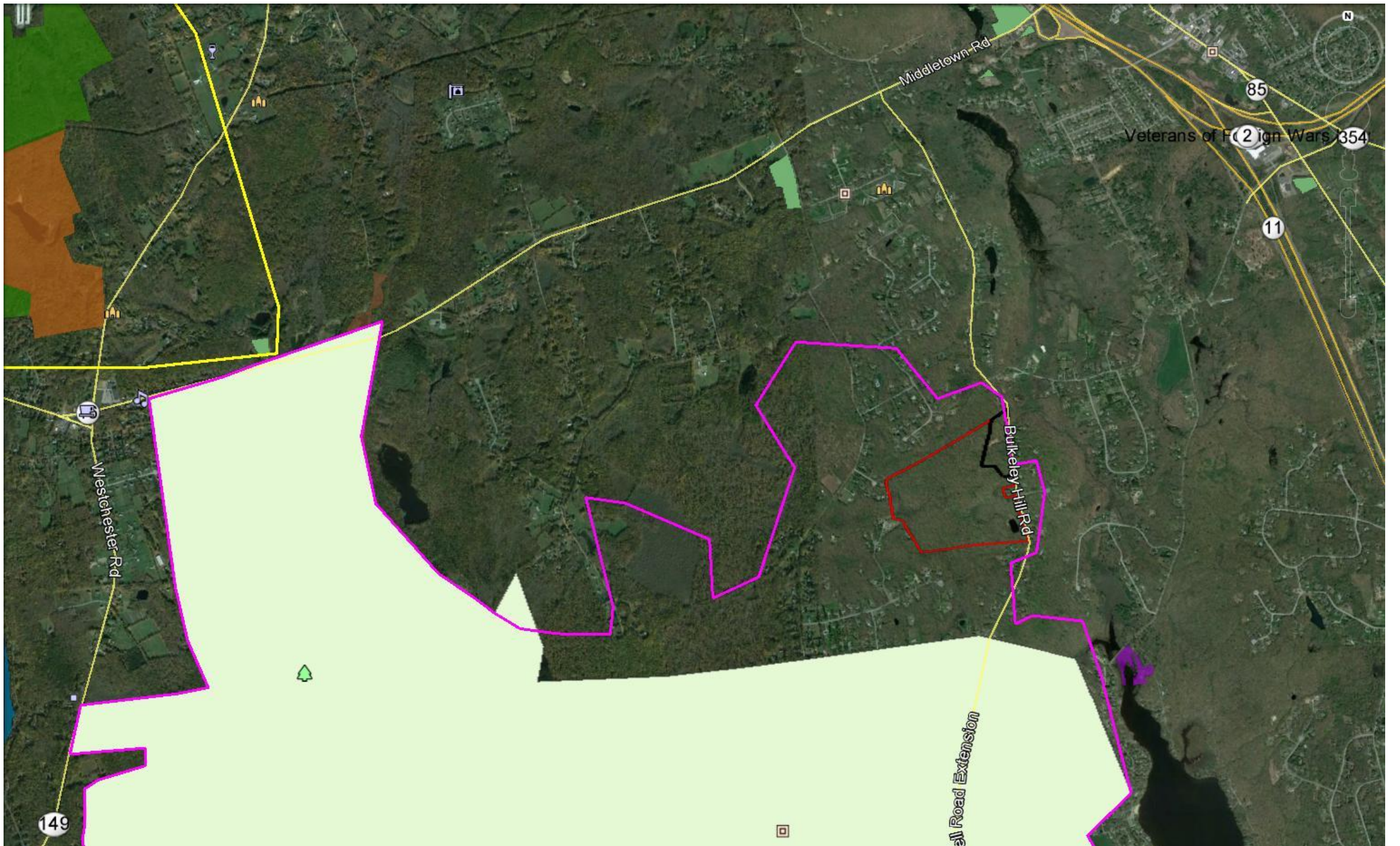
January 12, 2016





Colchester Land Trust

Legend



Middletown Rd

85

Veterans of Foreign Wars

11

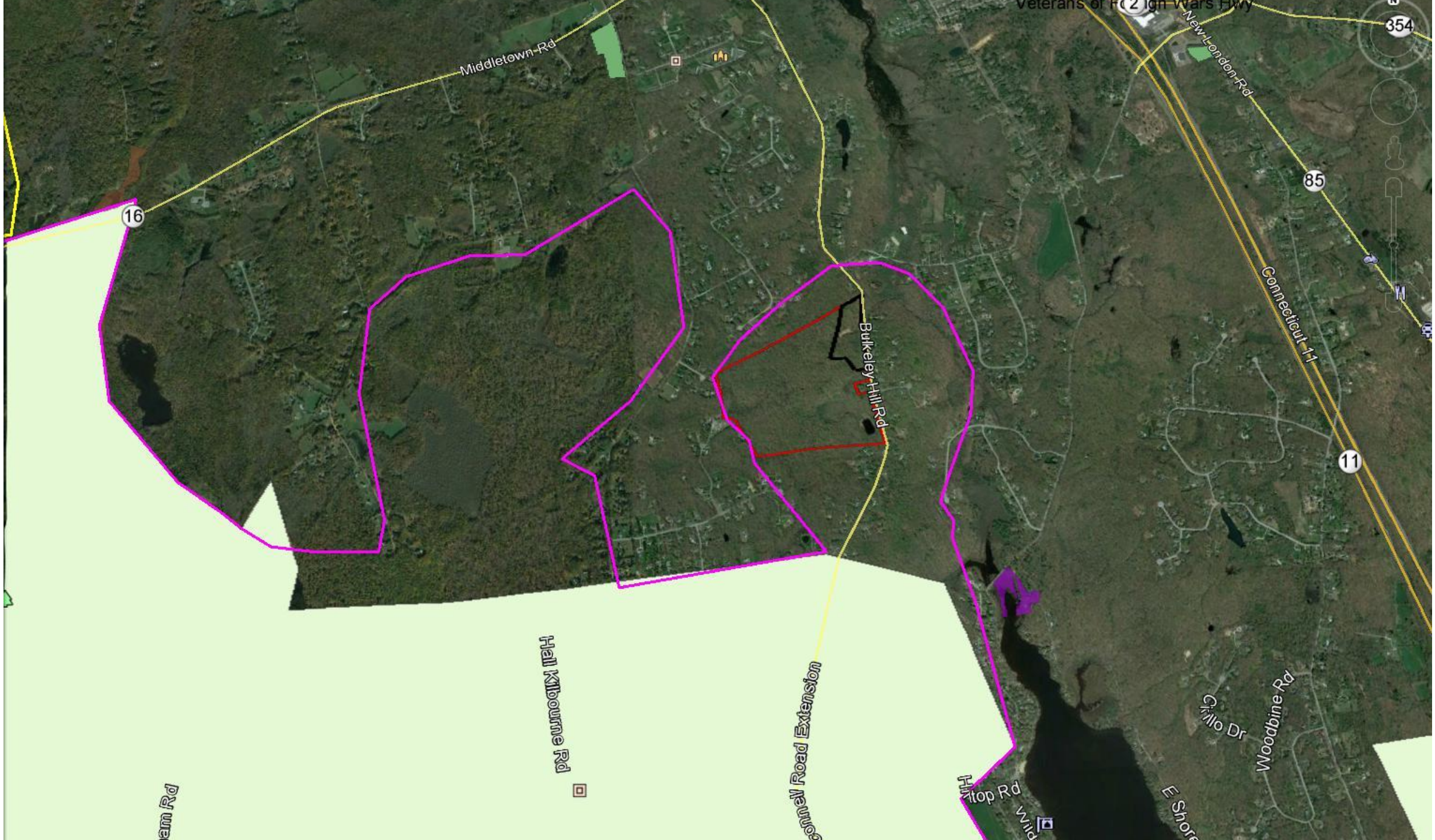
Bulkeley Hill Rd

Westchester Rd

al Road Extension

149

N



Middletown Rd

New London Rd

354

85

Connecticut 11

11

16

Berkley Hill Rd

Hill Kibourne Rd

Berkley Hill Rd Extension

Woodbine Rd

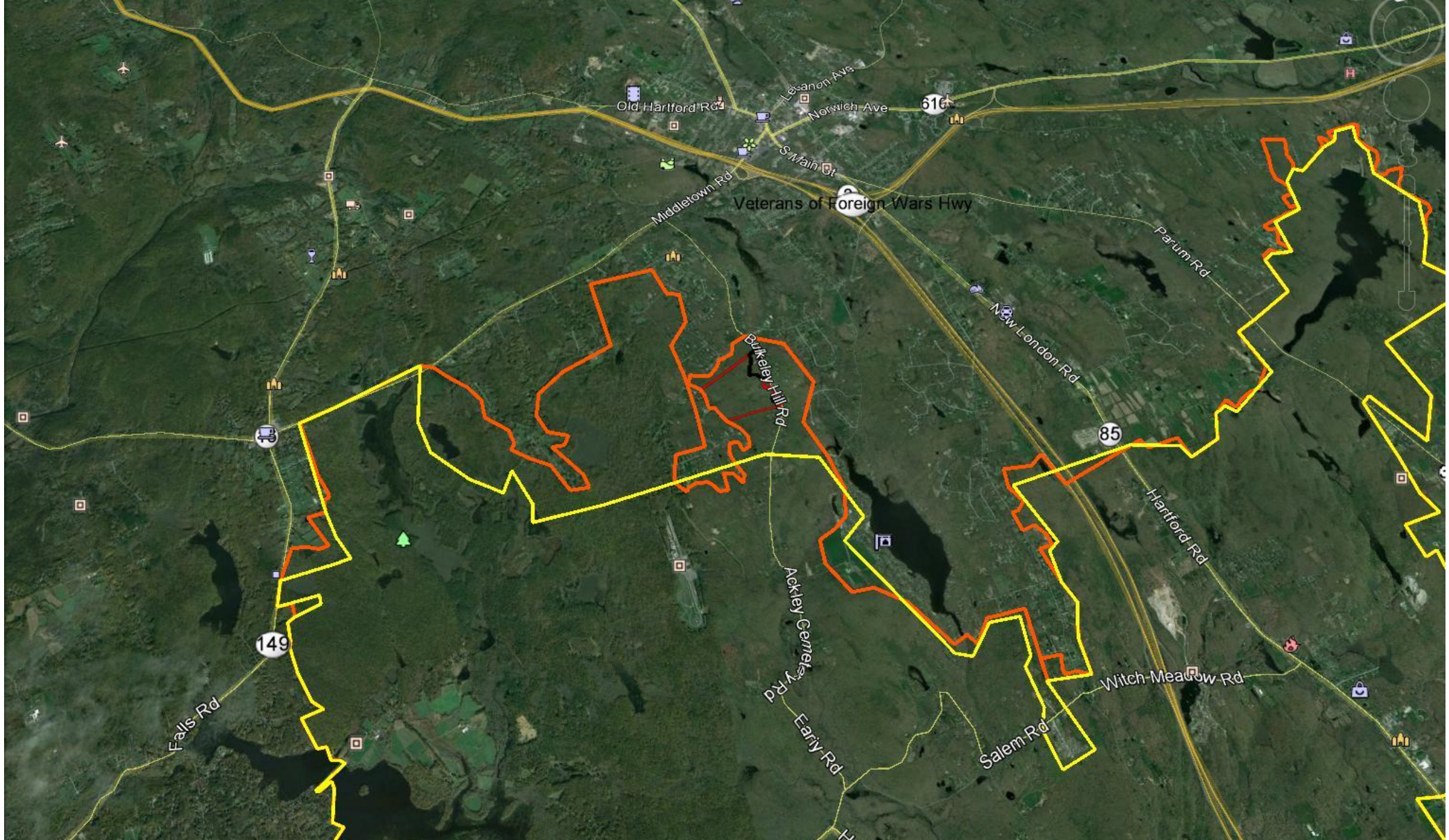
G. Milo Dr

E Shore

Hilltop Rd

Ham Rd

Wid



Old Hartford Rd

Lesanon Aves

Norwich Ave

616

S Main St

Veterans of Foreign Wars Hwy

Middletown Rd

Parum Rd

New London Rd

Burkeley Hill Rd

85

Hartford Rd

Ackley Gemmeley Rd

Witch Meadow Rd

Falls Rd

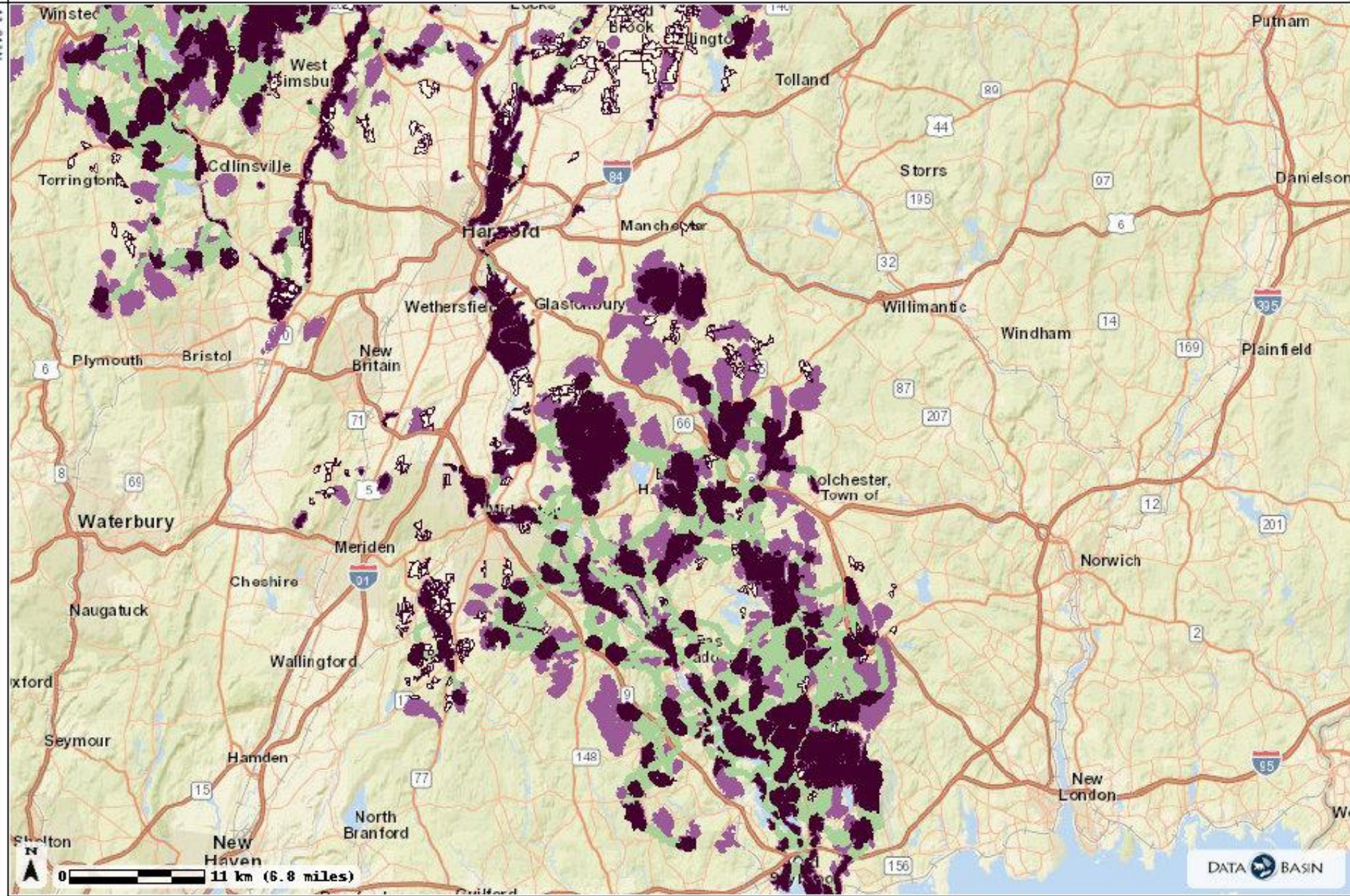
149

Early Rd

Salem Rd

73.52°W

41.94°N



Terrestrial Tier 1 Cores

Displaying: The TYPE field - scroll over for more information

- High priority core areas identified because they contain important or unique natural features. Add Grassland bird cores for full Tier 1 core network.

Terrestrial Tier 1 Grassland and Bird Cores

- Special category of Tier 1 core areas directed at the conservation of birds that depend upon hayfields, pastures, and other grasslands.

Terrestrial Tier 1 Core Connectors

Displaying: The TYPE field - scroll over for more information

- The best places for plants and animals to move across the landscape between Tier 1 Cores.

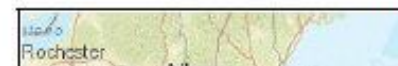
(continued on next page)

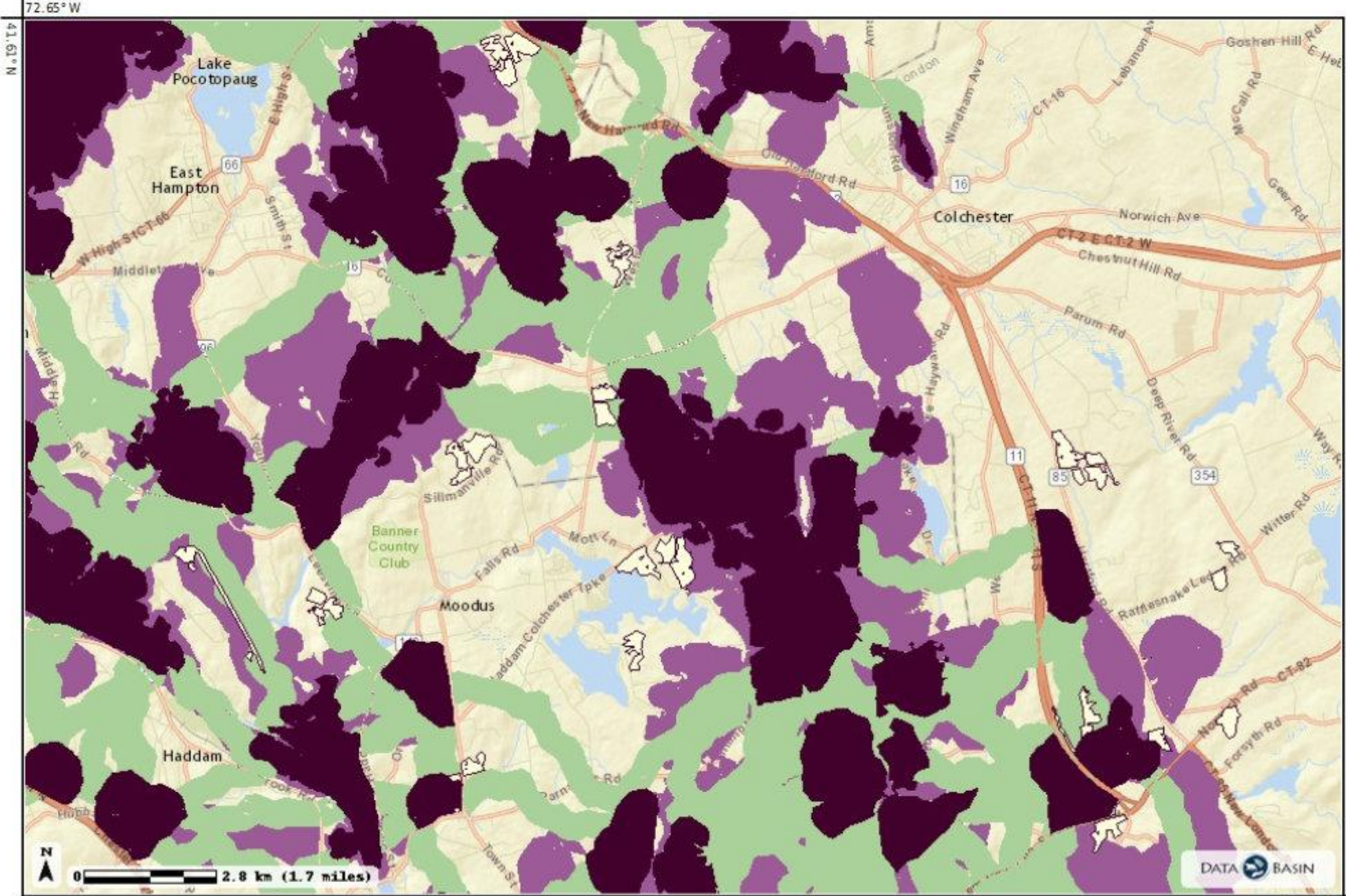


DATA BASIN

71.41°W

41.28°N





Terrestrial Tier 1 Cores
 Displaying: The TYPE field - scroll over for more information

■ High priority core areas identified because they contain important or unique natural features. Add Grassland bird cores for full Tier 1 core network.

Terrestrial Tier 1 Grassl and Bird Cores

□ A special category of Tier 1 core areas directed at the conservation of birds that depend upon hayfields, pastures, and other grasslands.

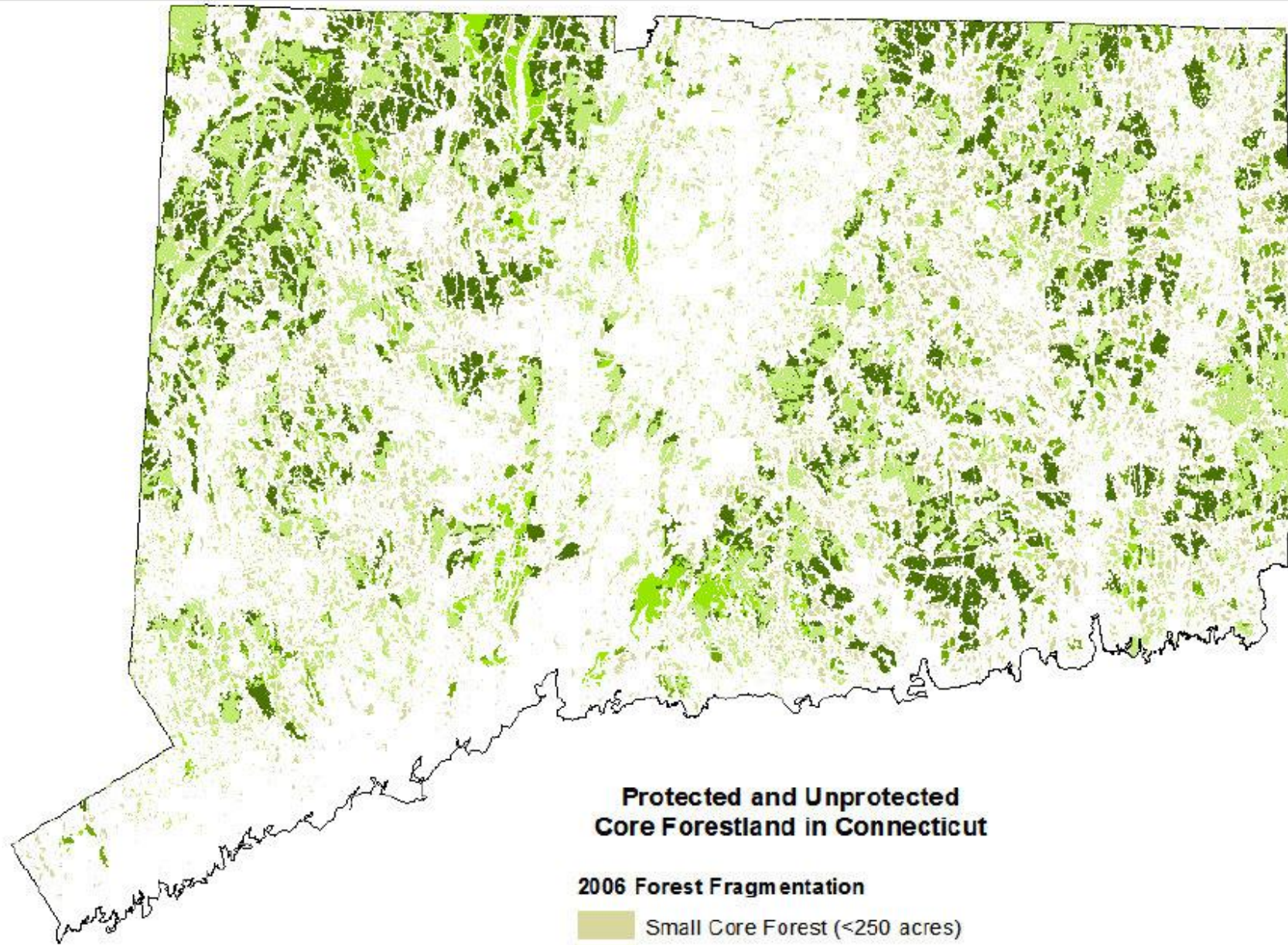
Terrestrial Tier 1 Core C onnectors

Displaying: The TYPE field - scroll over for more information

■ The best places for plants and animals to move across the landscape between Tier 1 Cores.

{continued on next page





**Protected and Unprotected
Core Forestland in Connecticut**

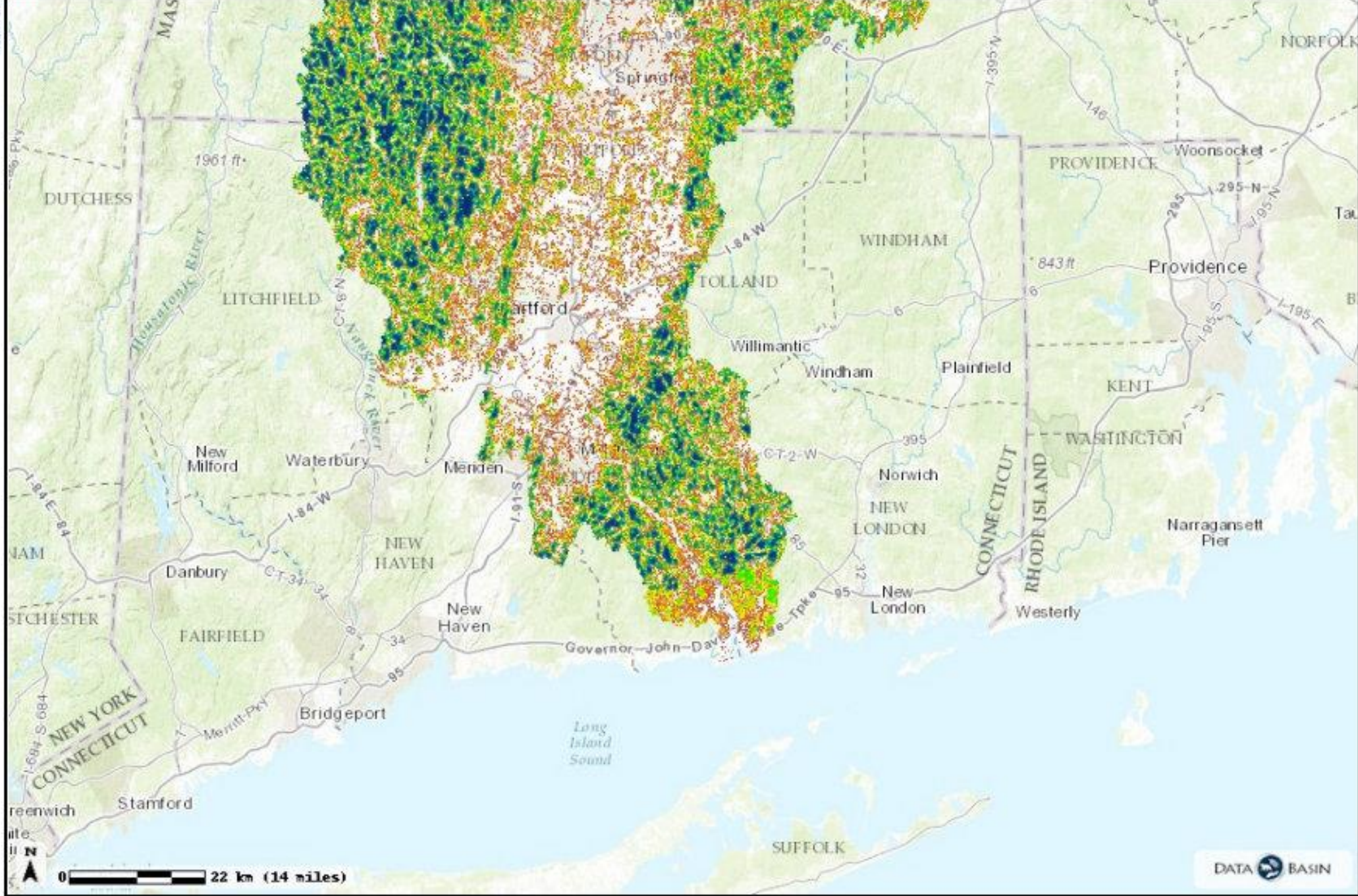
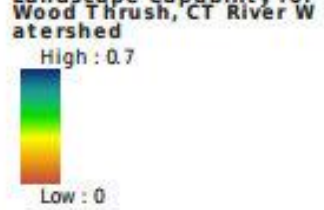
2006 Forest Fragmentation

-  Small Core Forest (<250 acres)
-  Medium Core Forest (250-500 acres)
-  Large Core Forest (>500 acres)
-  Protected Core Forest



**US Army Corps
of Engineers®**

42.46° N



DATA BASIN

40.68° N

69.81° W

