

Conservation Status of Fish, Wildlife and Natural Habitats in the Northeast and Mid Atlantic Region

Mark Anderson and
Arlene Olivero Sheldon





Photo by Brian Harris

Project Overview



Monitoring the Conservation of Fish and Wildlife in the Northeast

A Report on the Monitoring and Performance Reporting Framework for the Northeast Association of Fish and Wildlife Agencies



Prepared and compiled by: Foundations of Success



Technical materials developed by state and federal wildlife agency staff and partners across the Northeast

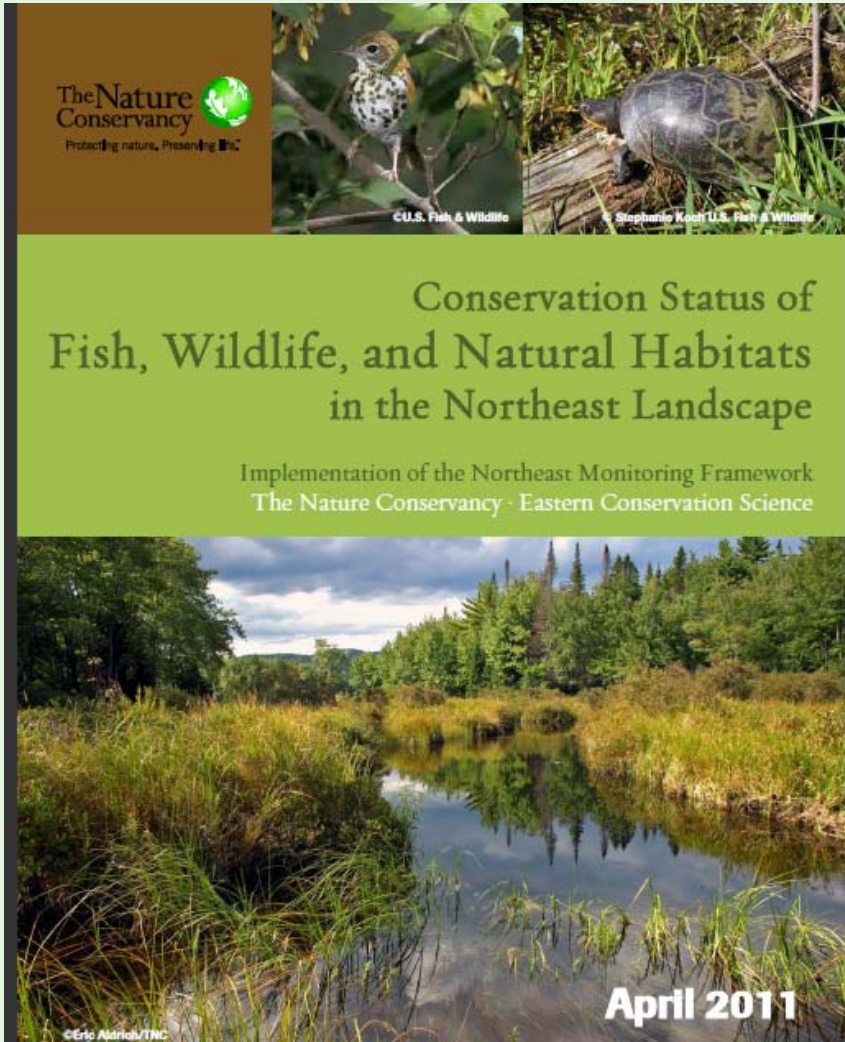
September 2008

- ❖ Guiding Document
- ❖ Advisory Committee
- ❖ Secured Lands
- ❖ Habitats & Species
 - Forest
 - Wetland
 - Unique habitats
 - Rivers and Streams
 - Lakes and Ponds
 - SGCN Species.

Report and Advisory Committee



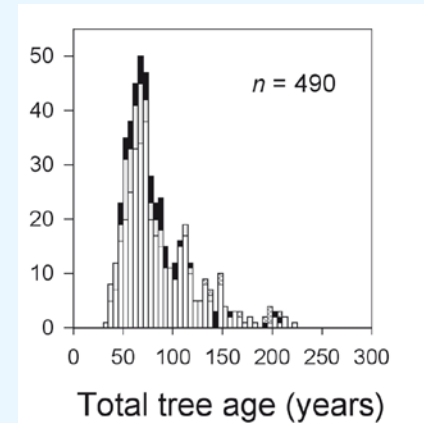
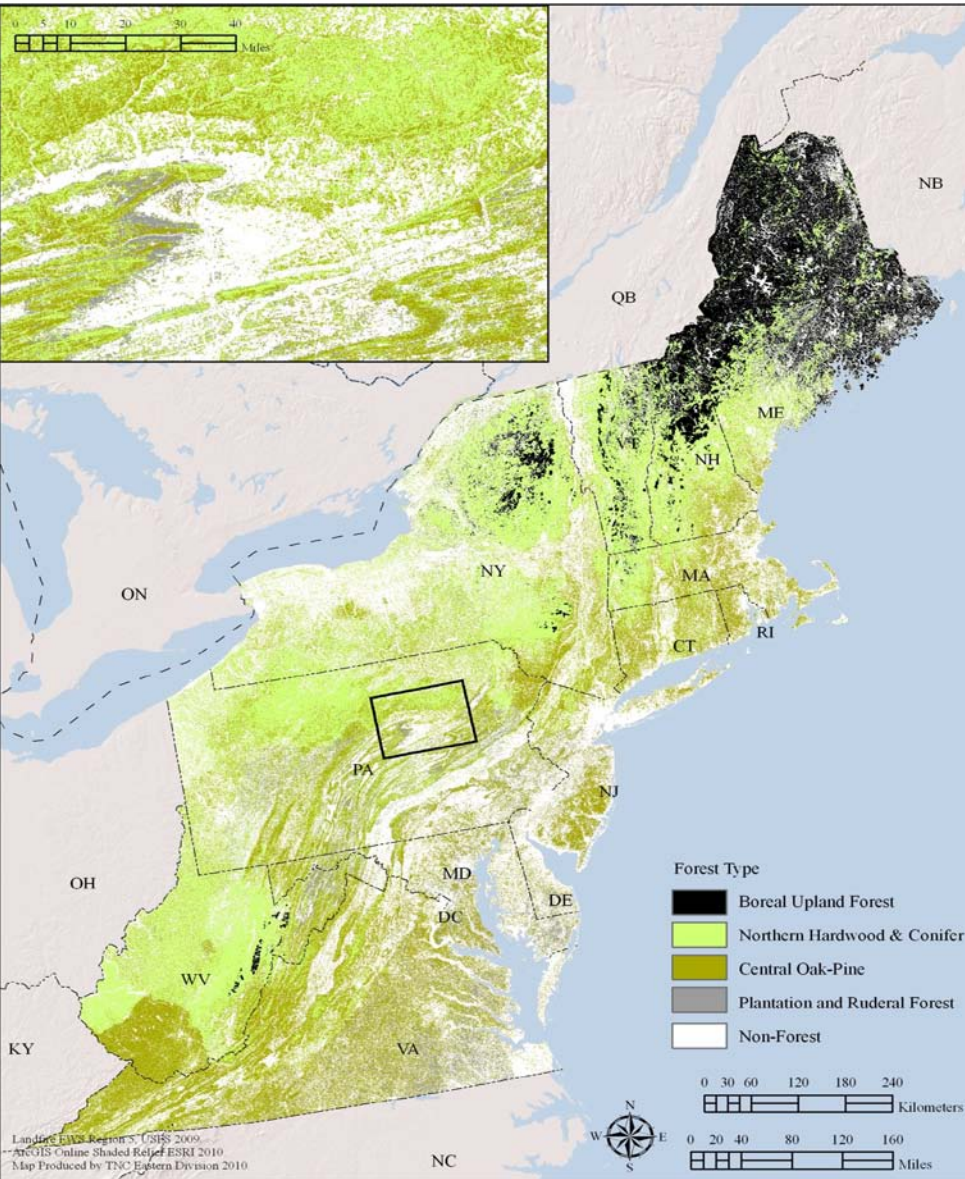
Photo by Brian Harris



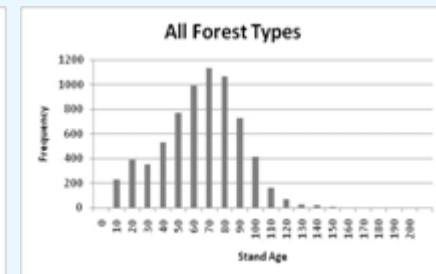
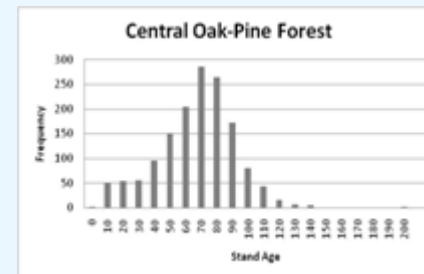
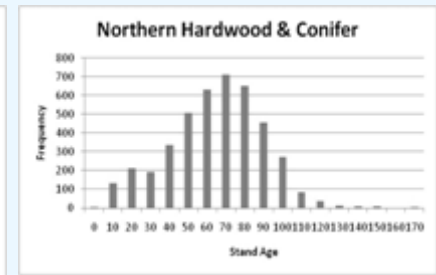
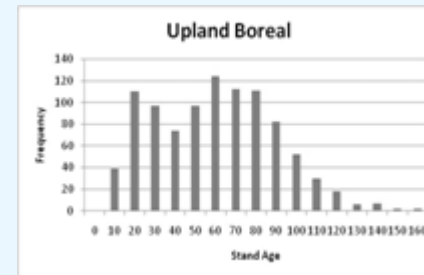
Representatives from every State

- ❖ Jenny Dickson and Rick Jacobson of CT DEP;
- ❖ Robert Coxe and Kevin Kalasz of DE DFW;
- ❖ John O'Leary and Thomas O'Shea of MA DFW;
- ❖ Glenn Therres, Lynn Davidson, Scott Stranko, and Dana L.Limpert of MD DNR;
- ❖ George Matula and Sandy Ritchie of ME DIFW;
- ❖ Jim Oehler, John Kanter, Matt Carpenter, Steve Fuller, and John Tash of NH DFG;
- ❖ Dave Jenkins, Kris Schantz, and Miriam Dunne of NJ DFW,
- ❖ Tracey Tomajer, Greg Edinger, Dan Rosenblatt, and Erin White of NY DEC;
- ❖ Dan Brauning and Lisa Williams of PA GC,
- ❖ Dave Day of PA FBC,
- ❖ Jeffrey Wagner of PA WPC/NHP;
- ❖ Jon Kart and Rod Wentworth of VT DFW; Gary Foster of WV CNR; Becky Gwynn of VA DGIF,
- ❖ Dave Tilton, Genevieve Pullis LaRouche, Ron Essig, and Ken Sprankle of USFWS;
- ❖ Don Faber-Langendoen of NatureServe,
- ❖ Dan Lambert of American Bird Conservancy,
- ❖ Dave Chadwick of the AFWA, Mary Anne Theising of USEPA,
- ❖ James McKenna of USGS.

Example: Forests: Age Structure

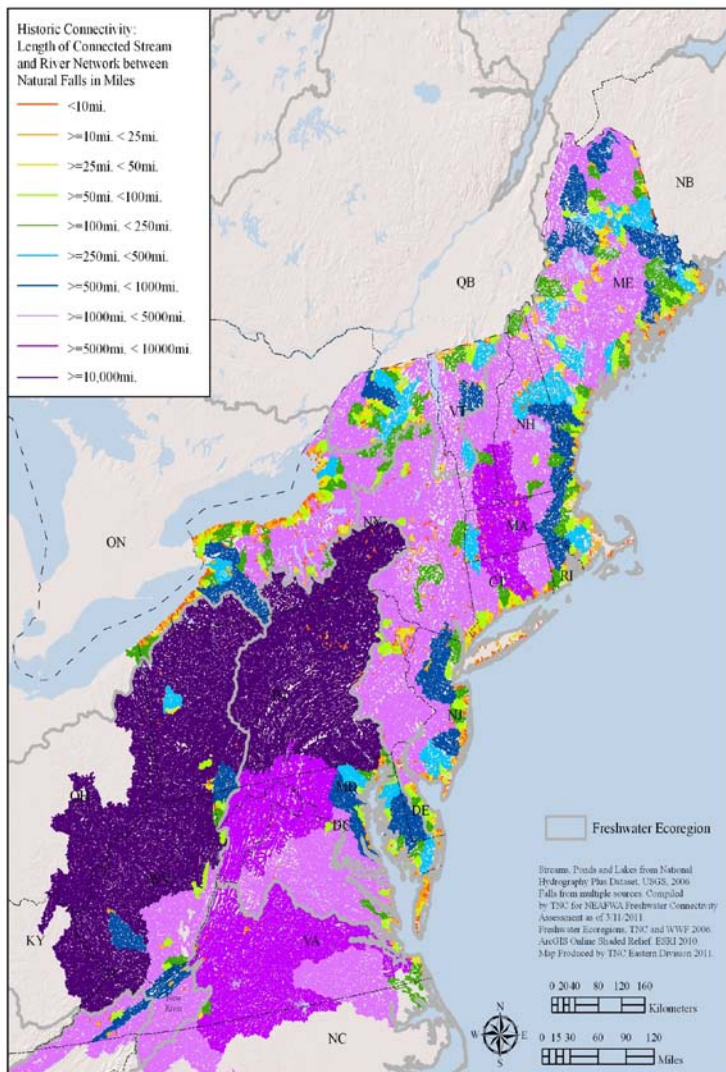


LANDFIRE MAP
FIA data
6952 stands



Example: Rivers: Connected Networks

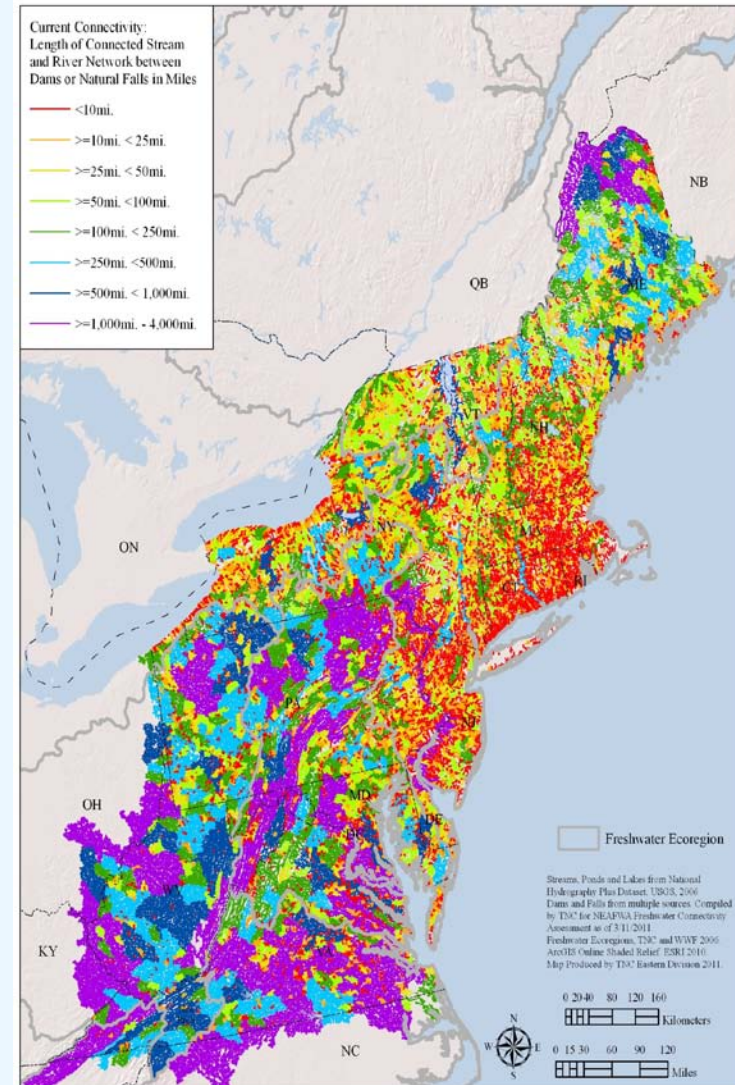
Original State: falls only



Original =
41 % in
networks over
5,000 miles
Current =
0 %

Original =
3 % in
networks 1-
25 miles
Current =
23 %

Current State: falls and dams





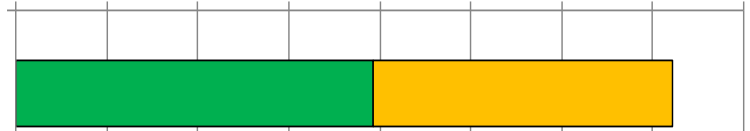
Example: Securement by Category

Concern trumps
Responsibility?

■ % GAP 1-2 ■ % GAP 3

0% 5% 10% 15% 20% 25% 30% 35% 40%

Widespread Concern, Low Responsibility (80)



Limited Distribution, High Responsibility (26)



High Concern, Low Responsibility (36)



High Concern, High Responsibility (5)



Widespread Concern, High Responsibility (28)



Moderate Concern, High Responsibility (2)

