

Species Resilience

Regionally Significant Species of Greatest Conservation Need



Responsibility and Concern

	Low Responsibility	High Responsibility		
	Found in 4+ states	Found in 2-3 states	Found in 4+ states	Total
Low Concern			Low concern, High responsibility (39:7:0)	
Moderate Concern		Limited distribution, High responsibility (53:26:26)	Moderate concern, High responsibility (22:10:2)	
High Concern	High concern, Low responsibility (78:54:36)		High concern, High responsibility (15:9:5)	
Widespread Concern	Widespread concern, Low responsibility (117:98:80)		Widespread concern, High responsibility (36:31:28)	
Total Species	195:152:116	53:26:26	112:57:35	360: 235: 177

360 Species > 1 state

Level of Regional Concern: SWAPS

Low concern = listed in < 25% of states that contained it.

Moderate = 25-50%,

High = 50-75%,

Widespread >75%

Level of Regional Responsibility:

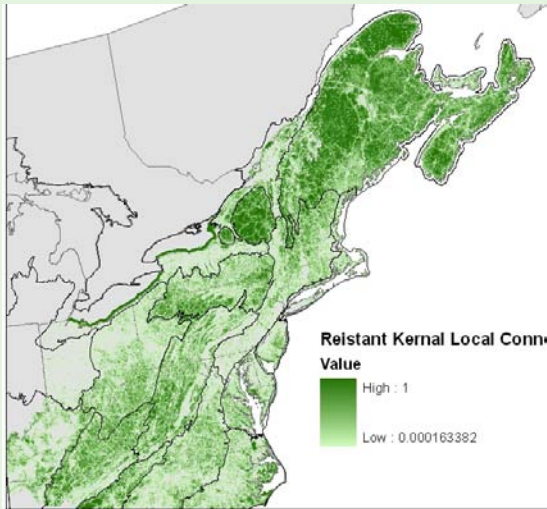
High responsibility = \geq 50 percent of the U.S. distribution in the 13 states

Low responsibility = \leq 50 percent of the U.S. distribution in the 13 states



Situational Resilience: 1

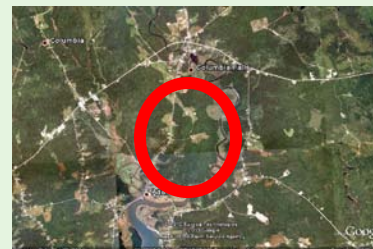
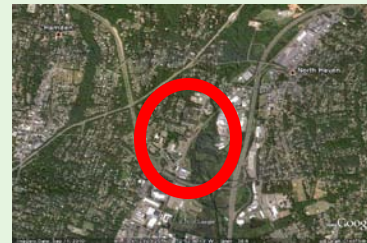
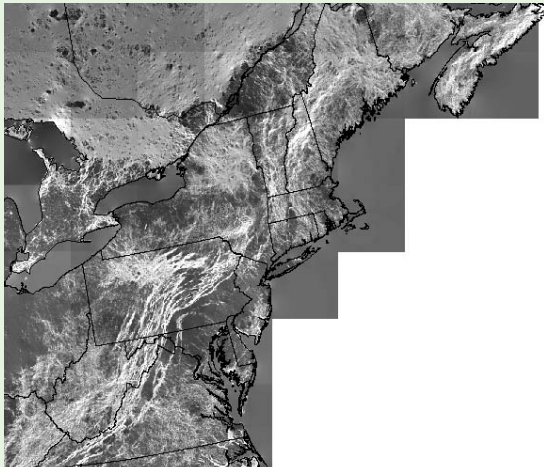
Local Connectedness



Landscape Permeability

Measures of the resistance of the direct neighborhood surrounding the location (1) or of the potential concentration of flows through the location point (2).

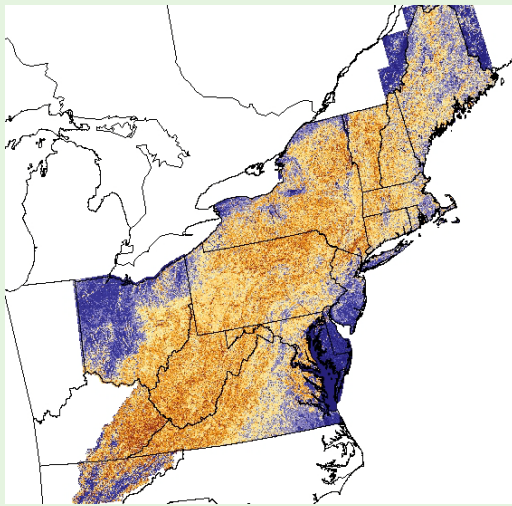
Flow Concentrations



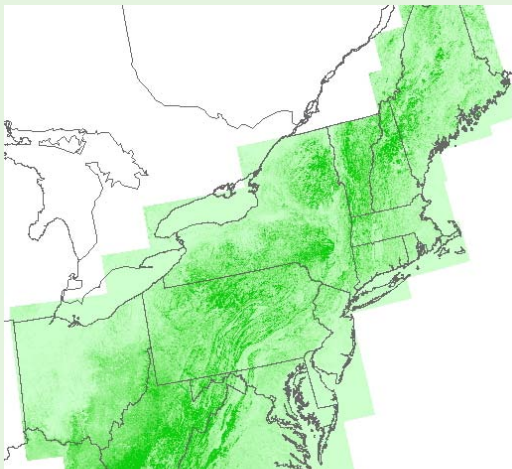


Situational Resilience: 2

Landform Diversity



Elevation range



Landscape Diversity

Measures of the topographic , elevation diversity, and wetland density in the direct neighborhood surrounding the location

What are the options for species to rearrange at the site level





Example Results: Resilience Scores compared to Regional Mean

