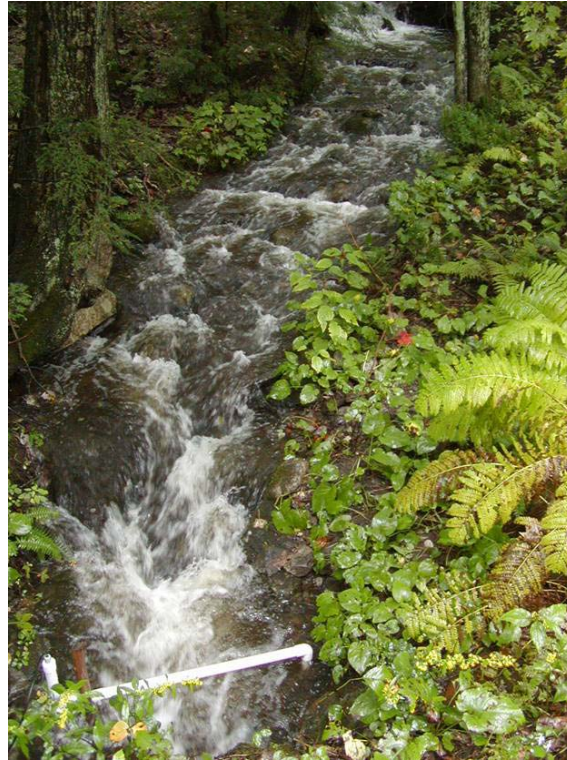


Ben Letcher

USGS, Conte  
Anadromous Fish  
Research Center,  
Turners Falls, MA

Keith Nislow

USFS, Northern  
Research Station,  
Amherst, MA

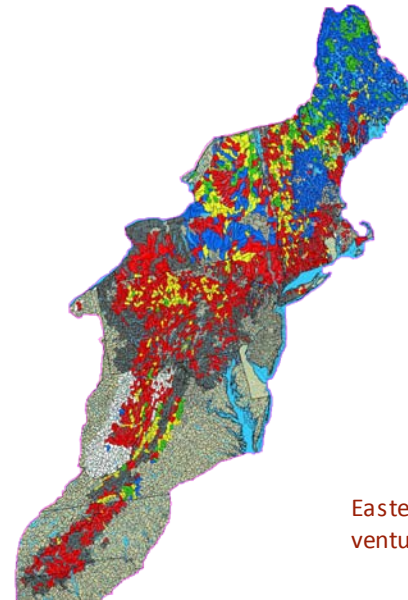


# SALMONID (BROOK TROUT) POPULATION PERSISTENCE

Development of a DSS

# Overall goal

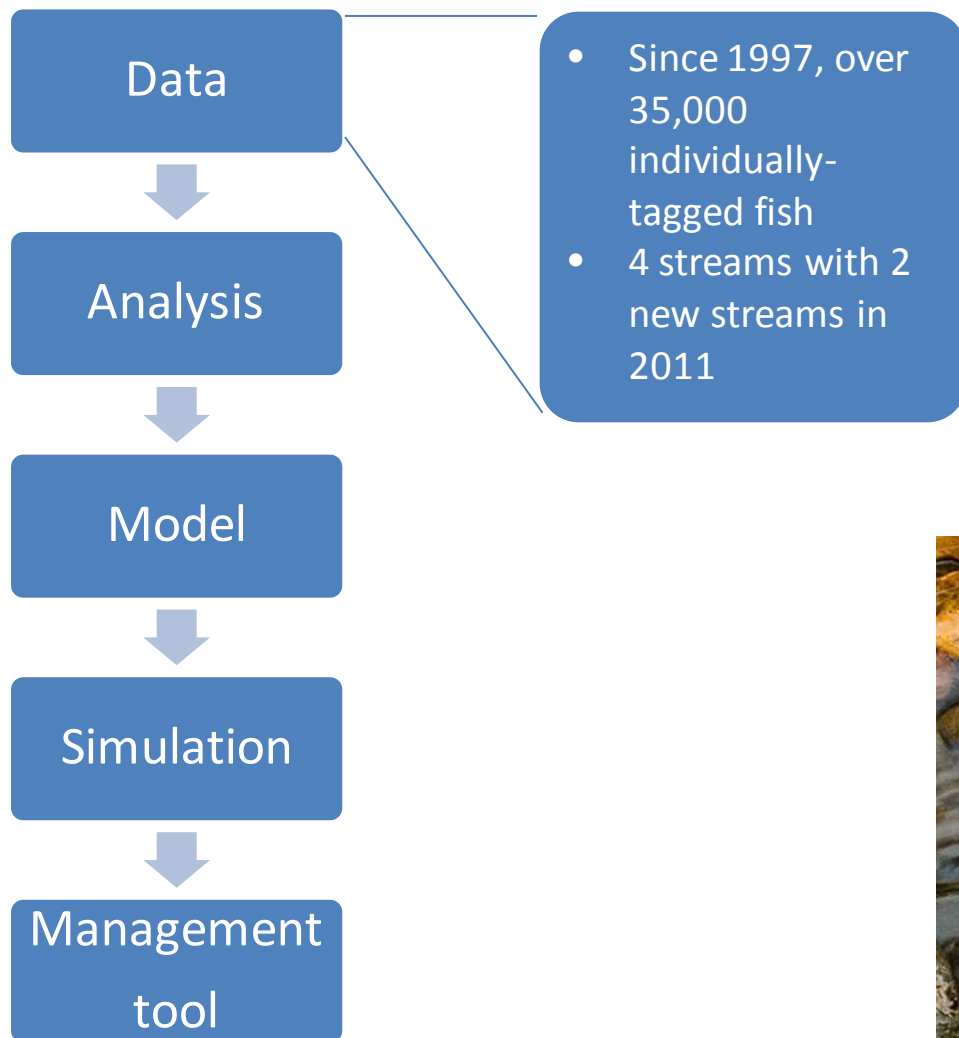
- Understand how populations work
- What affects local population persistence?
- Endpoint – probability of persistence after x years
  - ▣ Body size distributions
- Develop DSS tool for managers
  - ▣ Probability of population persistence under varying management scenarios



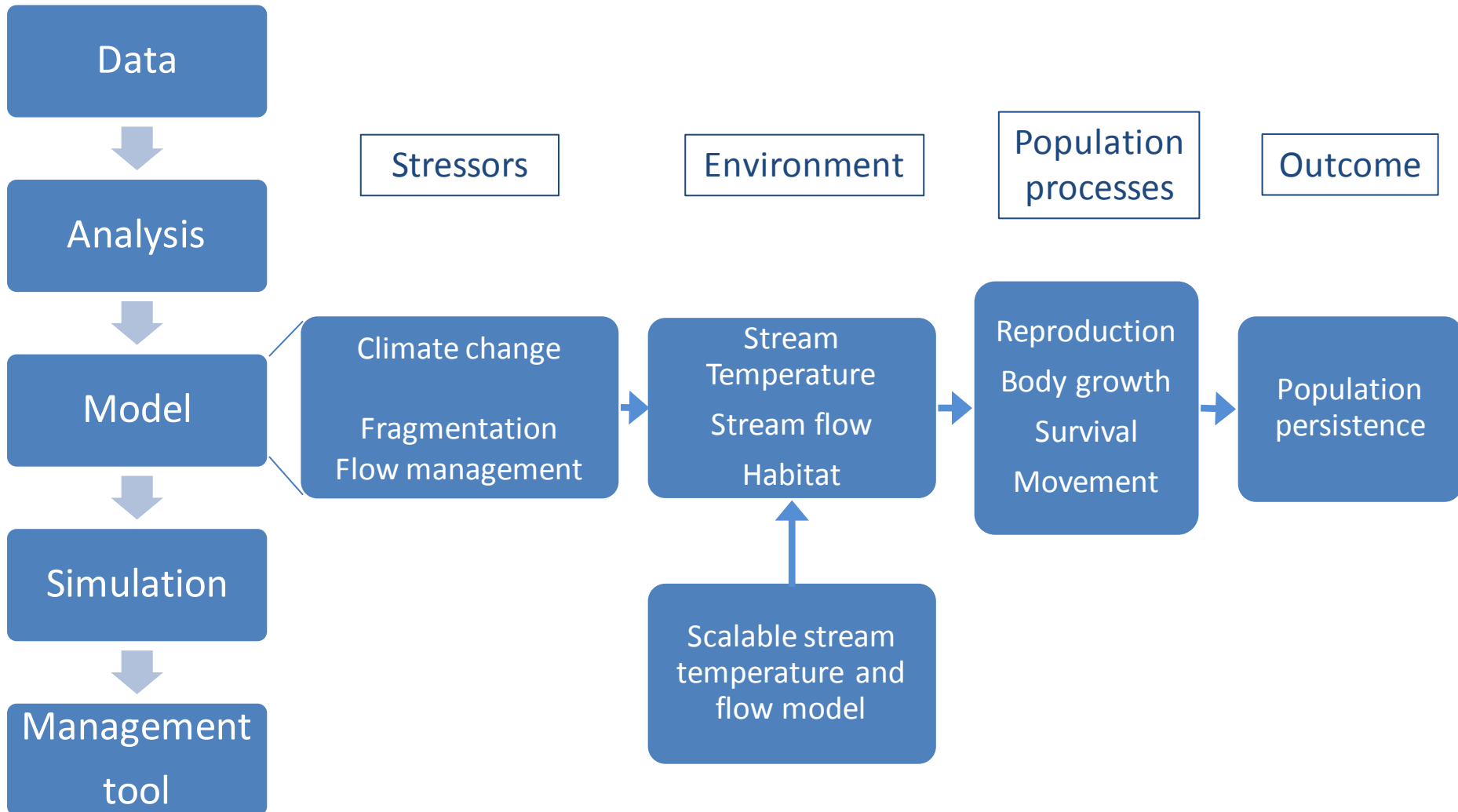
Eastern brook trout joint venture, 2007



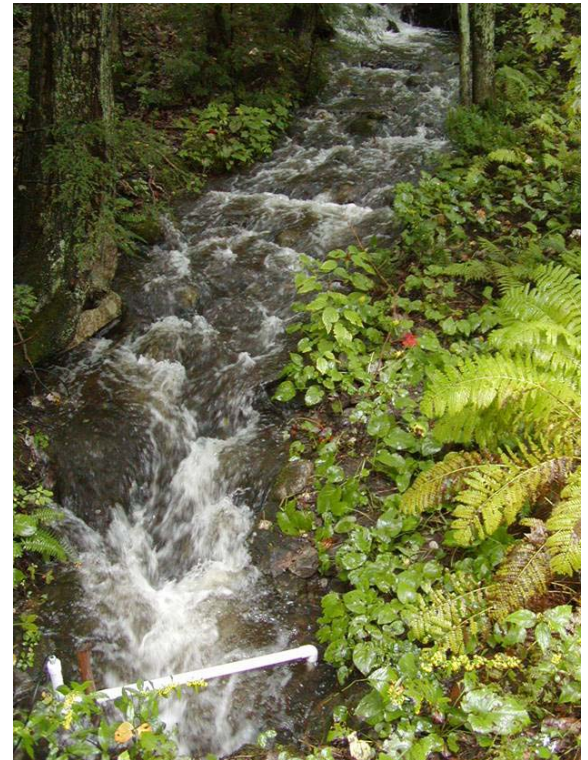
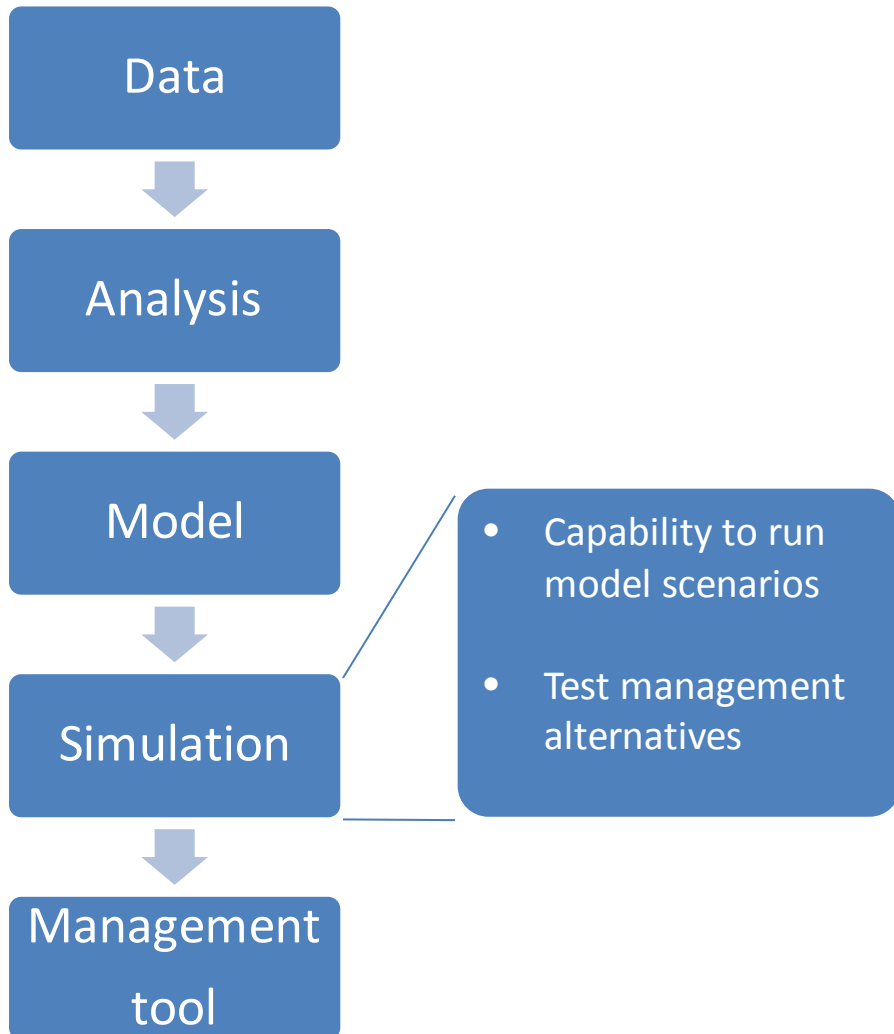
# Approach



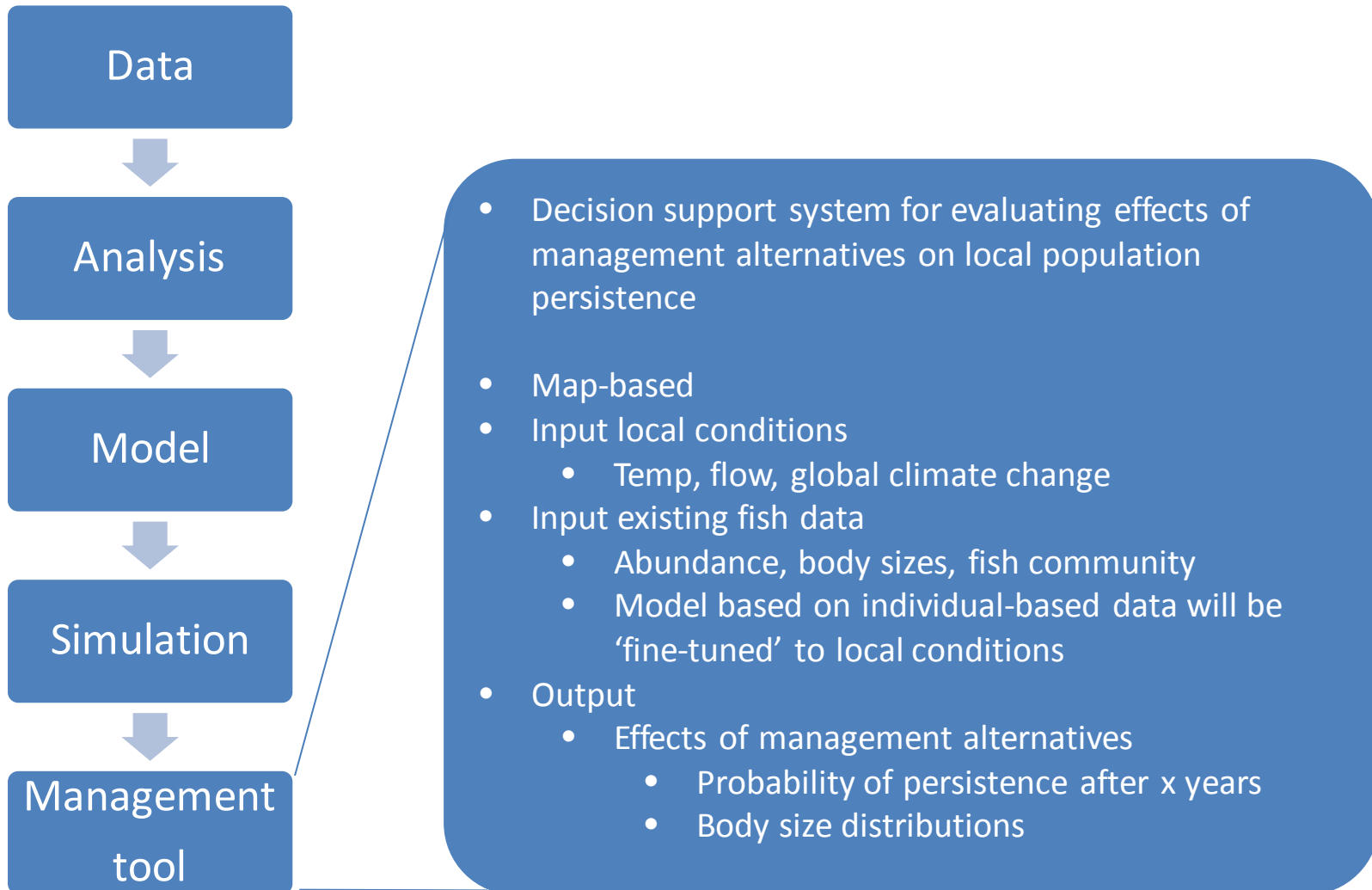
# Approach



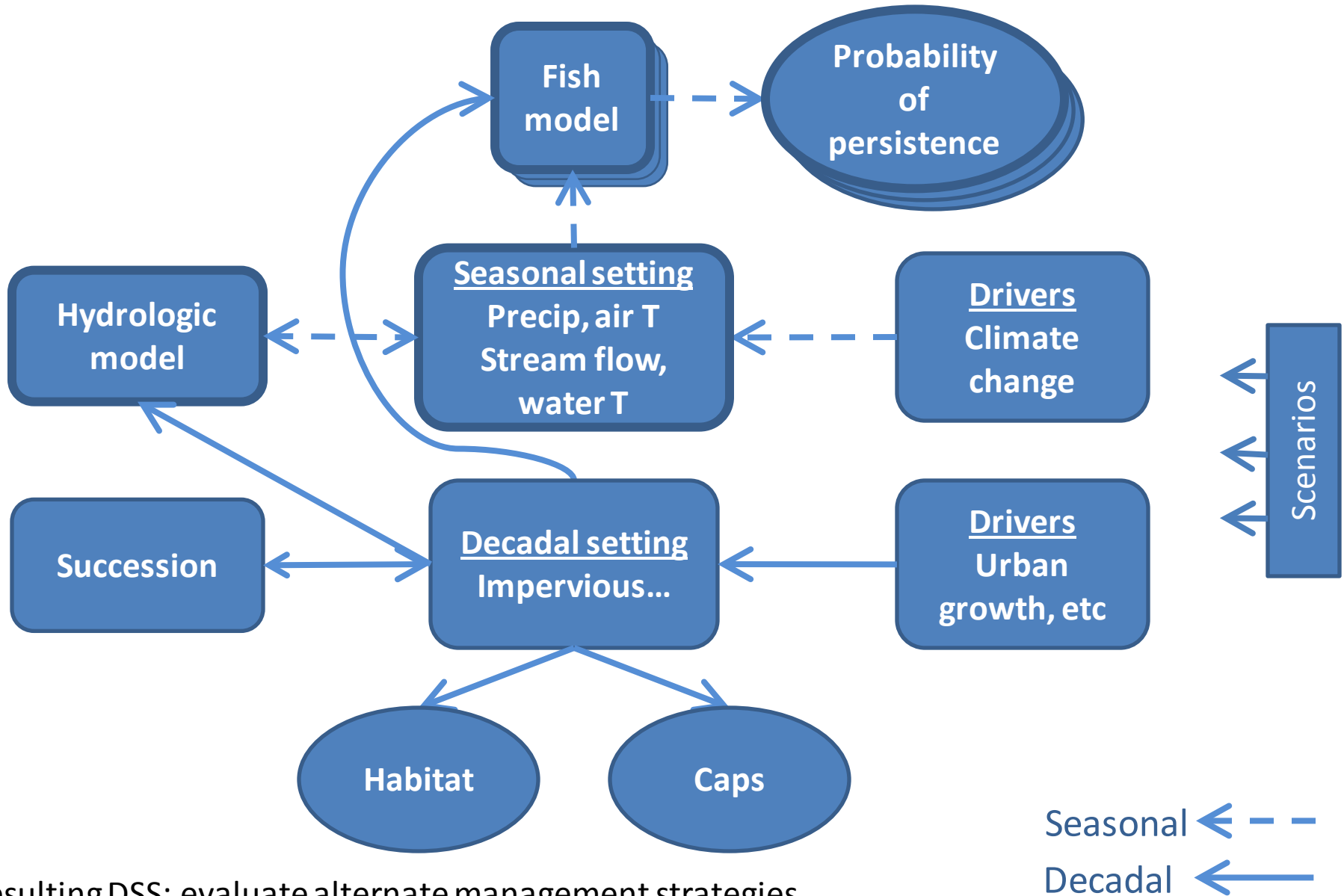
# Approach



# Approach



# Links to Terrestrial project



Resulting DSS: evaluate alternate management strategies