



Photo by Brian Harris

Mapping Terrestrial Habitats

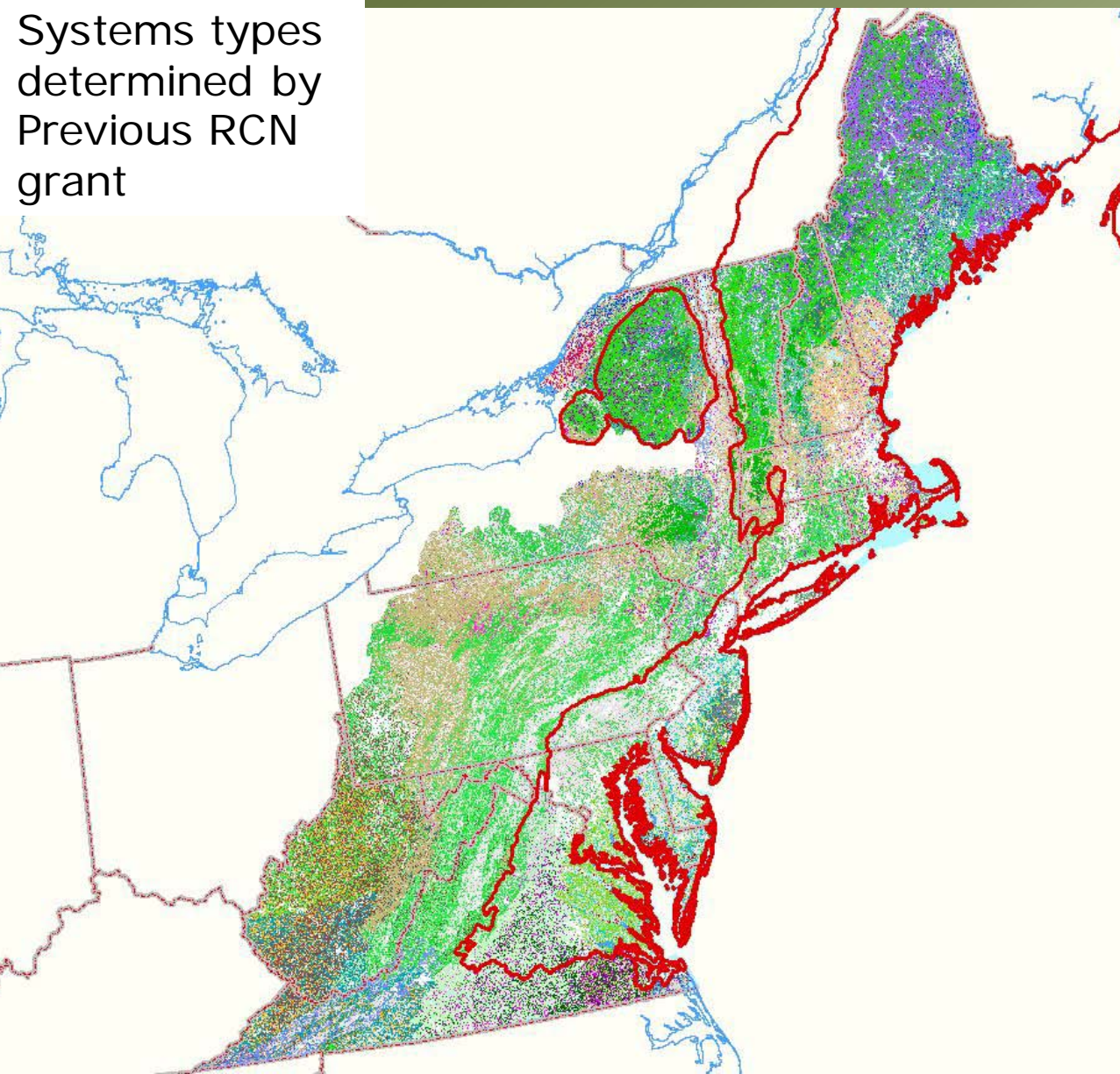
Base on NatureServe Ecological Systems



each

Terrestrial Habitats

Systems types determined by Previous RCN grant



Ecological Systems/Habitats: Wetland, U

- Laurentian-Acadian Conifer-Hwd Acid Swamp
- N-Central Appalachian Acidic Swamp
- Laur-Acad Alkaline Conifer-Hwd Swamp
- Laurentian-Acadian Freshwater Marsh
- Laur-Acad Wet Meadow-Shrub Swamp
- Boreal-Laur-Acadian Acidic Basin Fen
- N-Central Interior and Appal Acidic Peatland
- N-Central Int W et Flatwoods (wet Clayplain Forest)
- Acadian Coastal Salt Marsh & Estuary Marsh
- Acadian Maritime Bog
- Boreal-Laurentian Bog
- Laurentian-Acadian Floodplain Forest
- Eastern Boreal Floodplain

- SP system: N Appal-Acad Rocky Heath Outcrop
- SP system: Laur-Acad Calcareous Rocky Outcrop
- SP/LP system: Central Appal Dry Oak-Pine Forest
- SP system: Central App Pine-Oak Rocky Woodland
- SP system: L-A Acidic Cliff & Talus
- SP system: L-A Calcareous Cliff & Talus
- SP system: N-Central Appal Acidic Cliff & Talus
- SP system: N-Central Appal Circumneut Cliff & Talus
- SP system: NE Interior Pine Barrens
- LP/SP system: Great Lakes Alvar
- LP/SP system: Laurentian Acidic Rocky Outcrop
- SP system: Great Lakes Dune: 4 small occ's

- SP/LP system: Acadian-Appalachian Alpine Tundra
- Mbx system: Acad-Appal Montane Spr-Fir-Hwd Forest
- LP/SP system: Acadian Sub-boreal Spruce Flat
- Mbx system: Acadian Low-Elev Spr-Fir-Hwd Forest
- Mbx system: L-A N. Hwd Forest, typic
- Mbx system: L-A N. Hwd Forest, high conifer
- Mbx system: L-A Red Oak-N. Hwd Forest
- Mbx system: L-A N. Hwd Forest, moist/cool
- Mbx system: L-A Pine-Hem-Hwd Forest, typic
- Mbx system: L-A Pine-Hem-Hwd Forest, moist/cool
- LP/SP system: Appal Hem-N. Hwd Forest, typic
- LP/SP system: Appal Hem-N. Hwd Forest, moist/cool
- LP/SP system, former mbx: Mesic Clayplain Forest

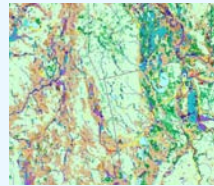
- NLCD-NHD open water
- NLCD agricultural classes 81-82
- NLCD developed classes 21-24 & 31

Data Driven:

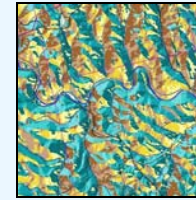
Wall to wall grids and confirming points



Elevation



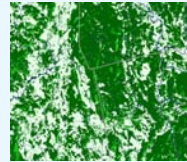
NWI
Wetland



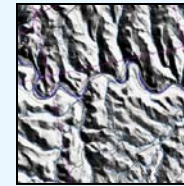
Categorical
Aspect



Geology



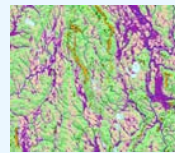
Canopy
closure



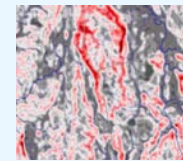
Shaded
Relief



Landcover



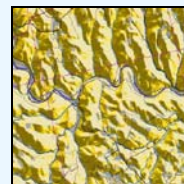
Landforms



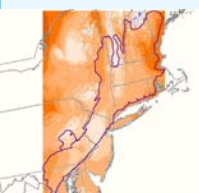
Rugosity



Solar
radiation



Aspect



Precipitation

Over 10,000
FIA and NHP
data points

UPLAND

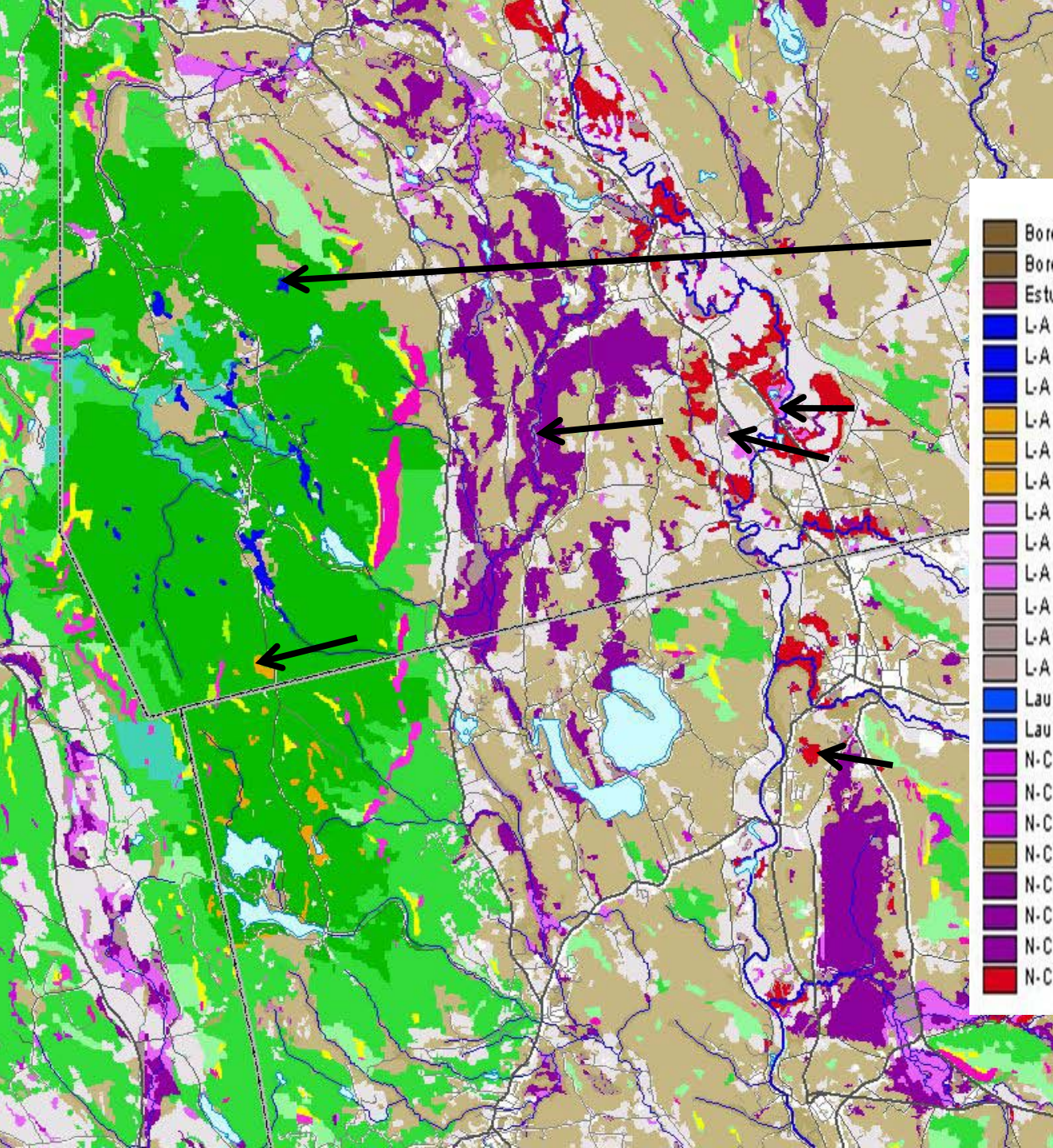
- SP system: Acad-Appal Montane Spruce-Fir-Hwd Forest: 201.566
- SP system: Central App Pine-Oak Rocky Woodland: 202.600
- SP system: N Appal-Acad Rocky Heath Outcrop: 201.571
- SP system: Eastern Serpentine Woodland: 202.347
- SP system: L-A Acidic Cliff and Talus: 201.569
- SP system: L-A Calcareous Cliff & Talus: 201.570
- SP system: N-Central Appal Acidic Cliff and Talus: 202.601
- SP system: N-Central Appal Circumneut Cliff & Talus: 202.603
- SP system: NE Interior Pine Barrens: 202.590

- mtx system: Appal Hem-N. Hwd Forest, drier
- mtx system: Appal Hem-N. Hwd Forest, moist/cool
- mtx system: Appal Hem-N. Hwd Forest, typic
- mtx system: Central Appal Dry Oak-Pine Forest
- mtx system: Laurentian-Acadian N. Hwd Forest, moist/cool
- mtx system: Laurentian-Acadian N. Hwd Forest, typic
- mtx system: Laur-Acad Pine-Hem-Hwd Forest, moist/cool
- mtx system: Laur-Acad Pine-Hem-Hwd Forest, typic
- mtx system: NE Coastal & Interior Pine-Oak Forest
- mtx system: NE Interior Dry-Mesic Oak Forest, moist/cool
- mtx system: NE Interior Dry-Mesic Oak Forest, typic

- Water
- Developed
- Agriculture

Underlying
patterns
Related to physical
Features.

WETLAND



- Boreal-Laurentian-Acadian Acidic Basin Fen: isolated
- Boreal-Laur-Acad Acidic Basin Fen: smaller stream riparian
- Estuarine units (185) along brackish shores in NY/NJ/MD
- L-A Alkaline Conif-Hwd Swamp: bigger river fldpln
- L-A Alkaline Conif-Hwd Swamp: isolated
- L-A Alkaline Conif-Hwd Swamp: smaller stream riparian
- L-A Conif-Hwd Acid Swamp: bigger river fldpln
- L-A Conif-Hwd Acid Swamp: isolated
- L-A Conif-Hwd Acid Swamp: smaller stream riparian
- L-A Freshwater Marsh: bigger river fldpln
- L-A Freshwater Marsh: isolated
- L-A Freshwater Marsh: smaller stream riparian
- L-A Wet Meadow-Shrub Swamp: bigger river fldpln
- L-A Wet Meadow-Shrub Swamp: isolated
- L-A Wet Meadow-Shrub Swamp: smaller stream riparian
- Laur-Acad Alkaline Fen: isolated
- Laur-Acad Alkaline Fen: smaller stream riparian
- N-Central Appal Acidic Swamp: bigger river fldpln
- N-Central Appal Acidic Swamp: isolated
- N-Central Appal Acidic Swamp: smaller stream riparian
- N-Central Int and Appal Acidic Peatland
- N-Central Int and Appal Rich Swamp: bigger river fldpln
- N-Central Int and Appal Rich Swamp: isolated
- N-Central Int and Appal Rich Swamp: smaller stream riparian
- N-Central Interior Wet Flatwoods