

Meeting goals

Examine existing state and federal temperature monitoring and modeling efforts across New England and NALCC

5 major questions:

- Existing data

- Database

- Monitoring network

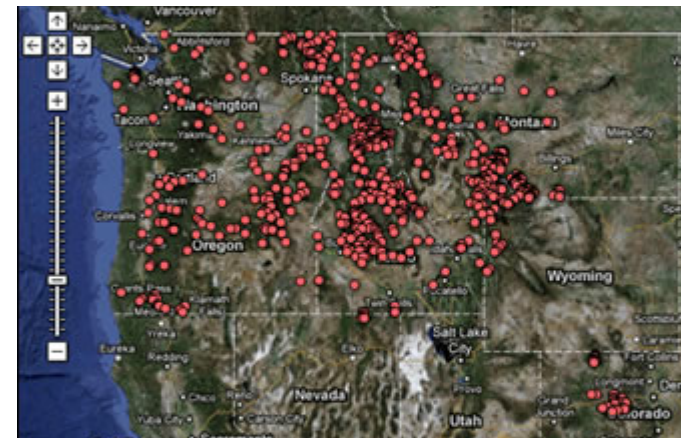
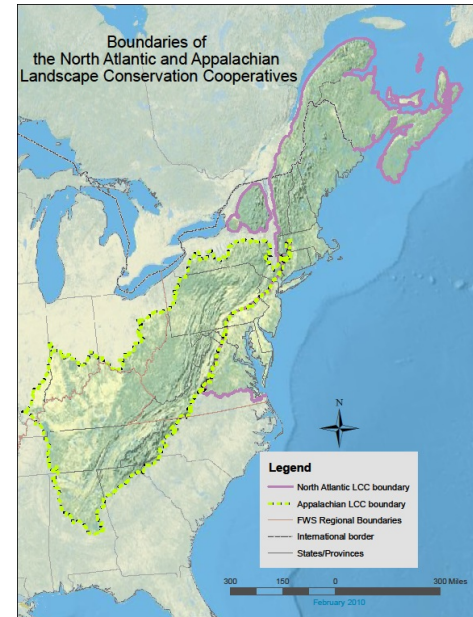
- Model evaluation

- Real-time, open source tool

Develop temperature models across NALCC

- Forecasting

- 'Ungaged' sites



Major questions

- What data are out there? Is it enough?
 - Space
 - Broad coverage
 - Local coverage
 - Time
 - Extent – full year
 - Frequency – within-day
 - Type
 - Paired air-water
 - Paired with biological sampling

Major questions

- What should we do with existing data?
 - Common database?
 - Use USFS-Boise as example or directly?
- If not enough data, should we set up monitoring network?
 - Who?
 - Funding?

Major questions

- How do existing and future models compare?
 - Which models can answer which questions
 - Space, time scale
 - Complexity
 - Comparative data needs
- Can we develop a ‘real-time’ database/modeling application?
 - New data automatically incorporated into models
 - Model comparison using common data source