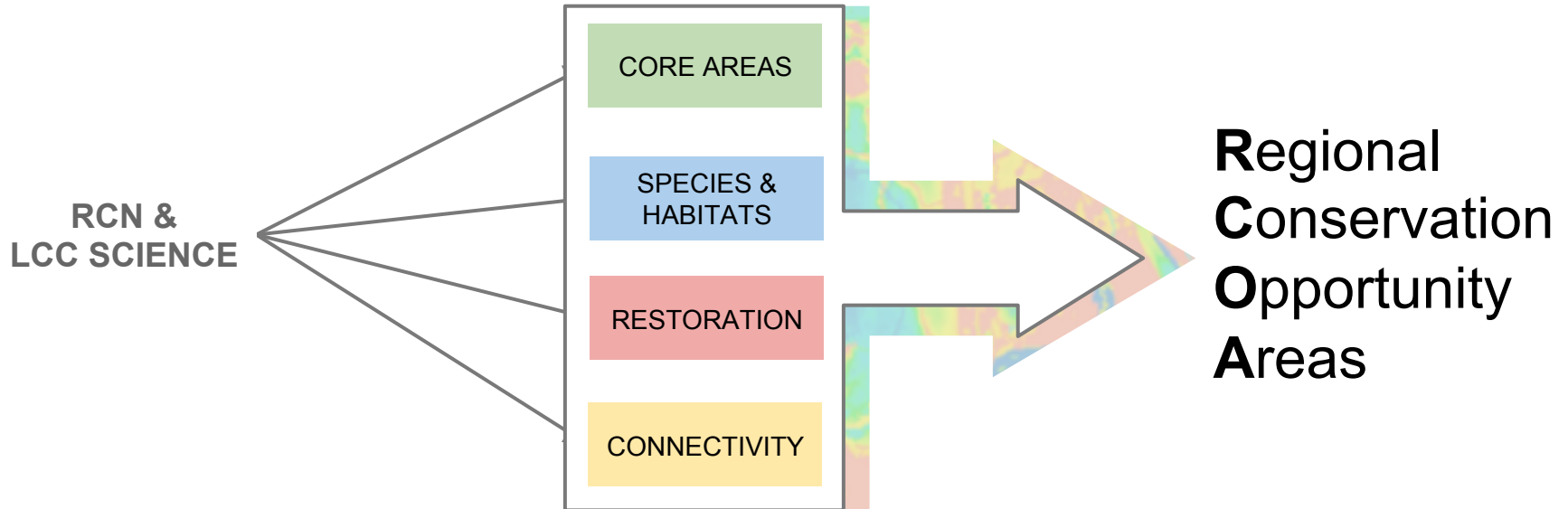


Regional Conservation Opportunity Areas Version 1.0

Overview

Vision

A **connected** network of **resilient** and **ecologically intact** habitats that will support **biodiversity** under changing conditions



Overview

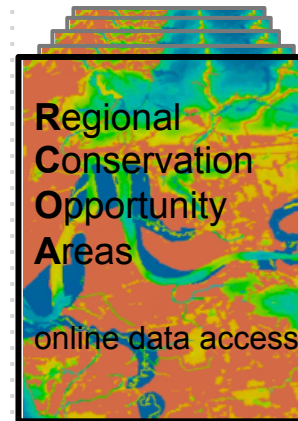
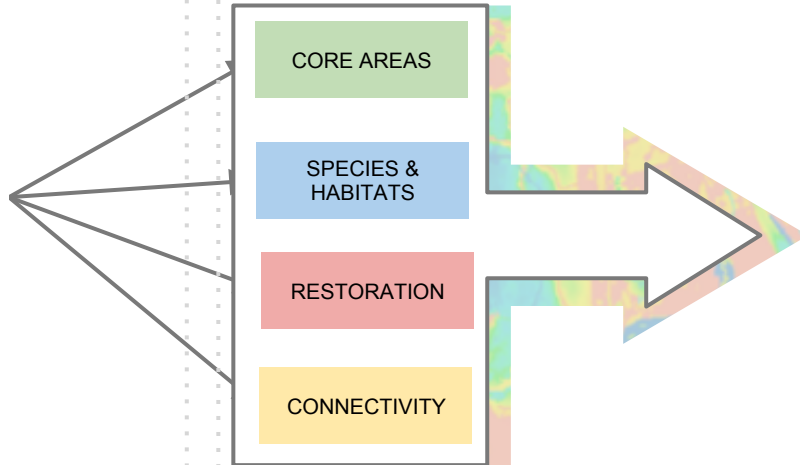
Leveraging investments

Inclusive collaboration

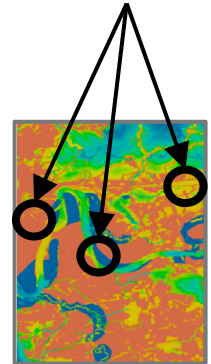
Relevant science

Better implementation

RCN &
LCC
SCIENCE



Coordinate partners for on-the-ground success



Leveraging investments

\$\$\$ LCC products INTEGRITY | CONNECTIVITY MODELS | RSGCN HABITAT ASSOCIATIONS

\$\$\$ RCN products HABITAT MAPS | RESILIENCE | SWAP SYNTHESIS

\$\$\$ Bear, moose and other representative species

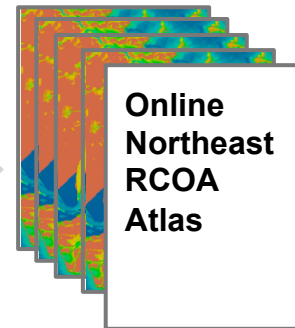
\$\$\$ Natural heritage SPECIES DATA | SPECIES RANKS

\$\$\$ Land management priorities

\$\$\$ Cultural resources

\$\$\$ Partner products

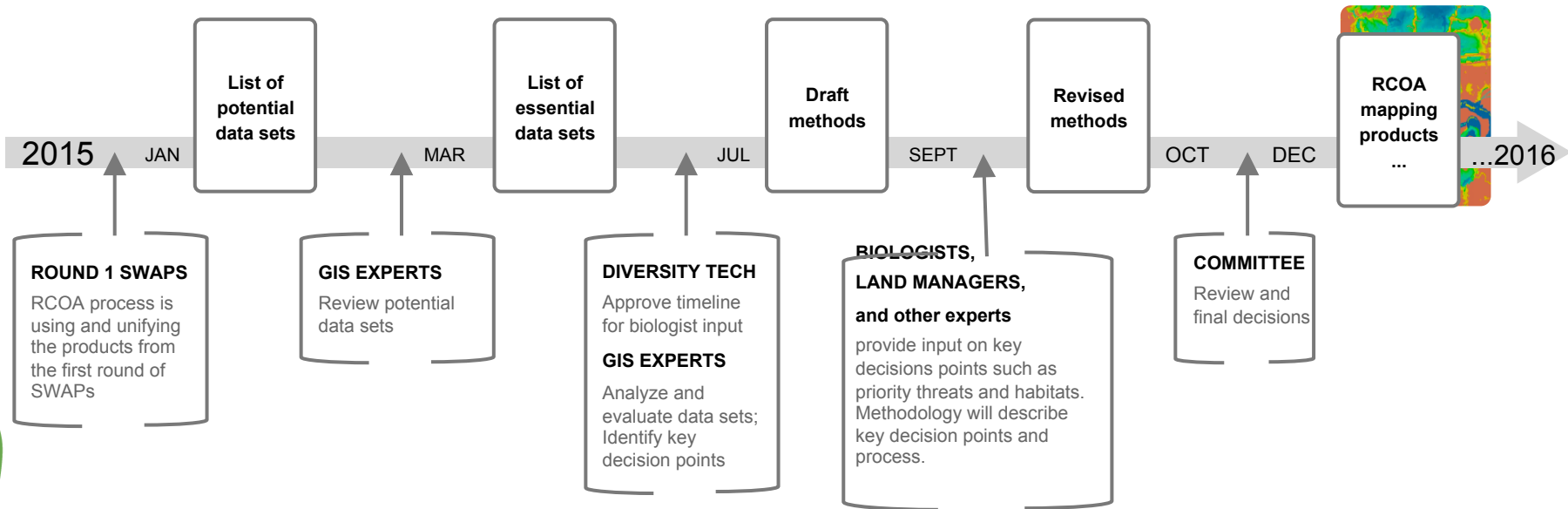
RCOA
process



Online
Northeast
RCOA
Atlas

Inclusive process

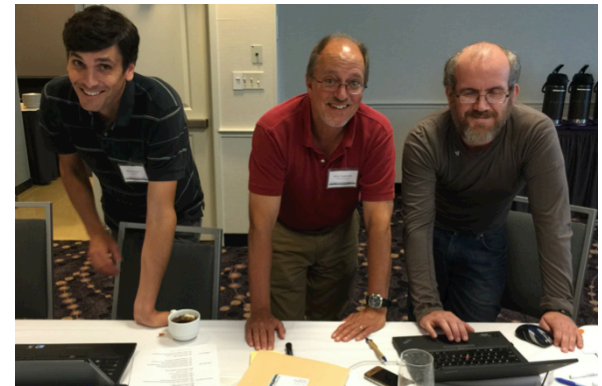
Key decision points for biologists and diversity tech committee



Serious collaboration

Through the RCOA process the workgroup agrees...

- **team members are exploring and teaching each other about RCN & LCC science**
- **RCN & LCC science is more accessible when staff are engaged in developing applications**
- **collaboration is making RCN & LCC science relevant to states for on the ground work**
- **GIS staff bring learning back to agencies for day to day use**
- **experts and research PIs are working side by side with end users of GIS data**



Better implementation

Through the RCOA process the workgroup agrees...

- methodology will be referenced in SWAPs, maps will become available in 2016
- opportunity areas are efficient “no regrets” targets for voluntary action on the ground
- plan in place to make best use of occurrence data and resolve known issues
- new approaches find best habitat for RSGCN

...and could help pre-empt the need to list

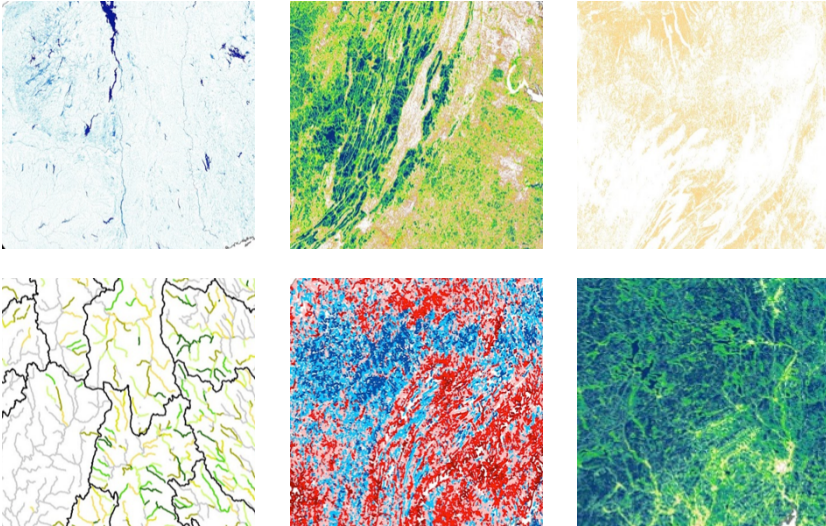
- regional context complements state COAs
- data is good!



Products and Uses

Products

An atlas with methodology documentation



Uses

Restoration & land management

Inform land protection

Find core areas for all species

Complement/Confirm state priority areas

Regional context for state decisions

Monitor changes in landscape over time

Inform policy and listing decisions

Grant applications

Guide SWAP implementation and RCNs

Comparison with Other Projects

RCOAs & COAs

States are developing Conservation Opportunity Areas (COAs) as part of their SWAPs. **Regional Conservation Opportunity Areas (RCOAs) will help put local priorities in a regional context by using regional data from RCN & LCC projects. RCOAs will complement COAs.**

CT River Pilot

The CT River Pilot **tested applications of RCN and LCC science and has provided lessons and insight** to applications for RCOAs. The pilot draws on data from the the UMASS Designing Sustainable Landscapes project, which is built upon RCN habitat maps.

DSL

The UMass Designing Sustainable Landscapes Project assesses the capability of current and future landscapes. **Core areas** for conservation are in part derived from the **Index of Ecological Integrity**, measuring the relative condition of each type of habitat mapped by the **Northeast Terrestrial Habitat Classification** developed with RCN funds.

Conservation Blueprint

A collaboratively designed **spatial plan for the South Atlantic similar to RCOAs**, responding to potential future changes, including sea level rise and climate change, and created to help inform and prioritize conservation decisions and actions in the South Atlantic.