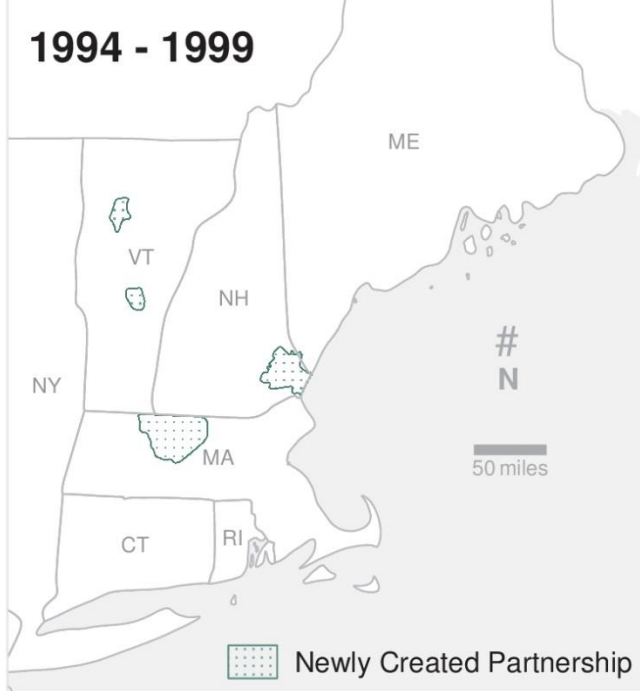


**Regional Conservation Partnerships in
New England and Eastern New York:
Using NALCC Data Layers and Beginning
to Implement the CT Watershed LCD**

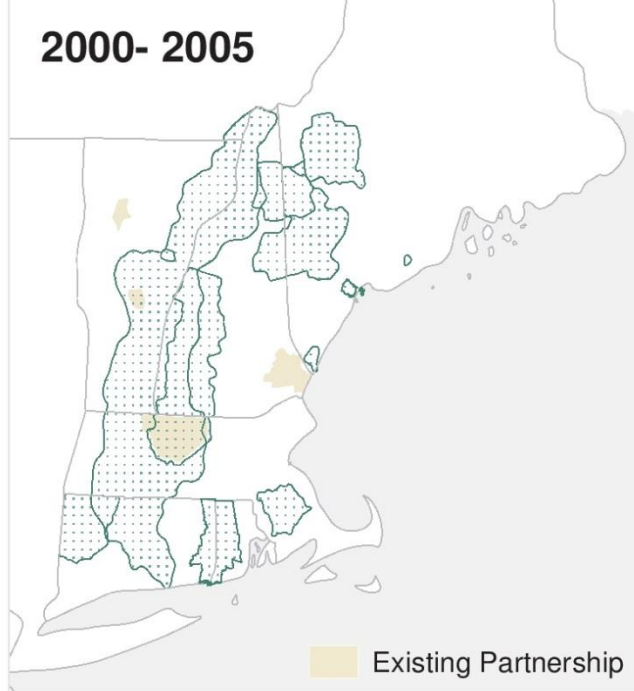
**Bill Labich, Senior Conservationist,
Highstead Foundation
Coordinator, RCP Network**

**North Atlantic Landscape Conservation Cooperative
Steering Committee Agenda
Wednesday, April 6, 2016, 8:00 a.m. – 4:00 p.m. Annapolis, MD**

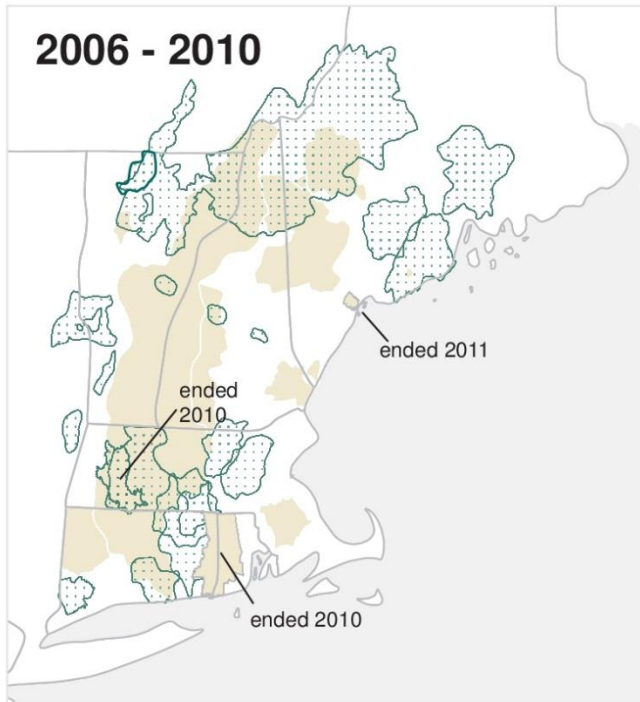
1994 - 1999



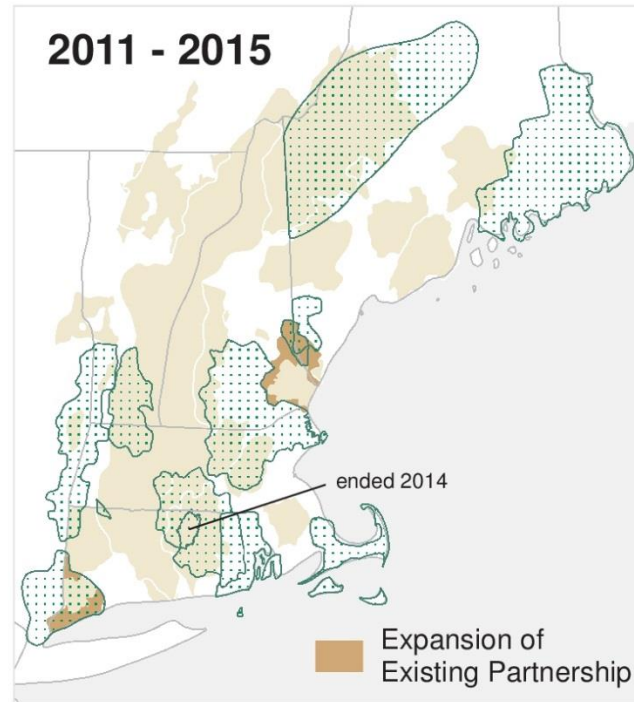
2000- 2005



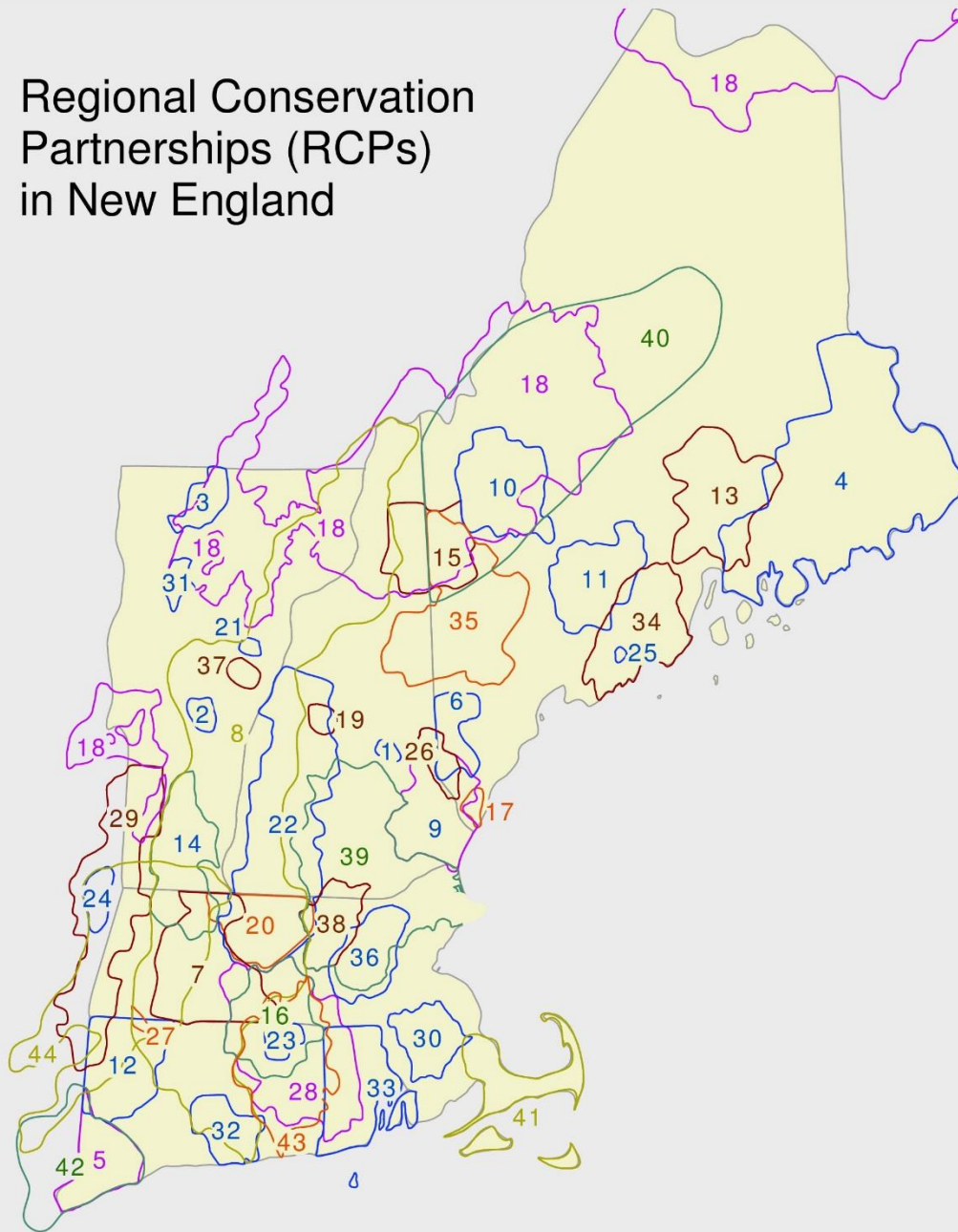
2006 - 2010



2011 - 2015



Regional Conservation Partnerships (RCPs) in New England



- 1 Belknap Range Conservation Coalition
- 2 Chateaugay No Town Conservation Project
- 3 Cold Hollow to Canada Forest Link Project
- 4 Down East Research and Education Network
- 5 Fairfield County Regional Conservation Partnership
- 6 Forest Works!
- 7 Forever Farmland Initiative
- 8 Friends of the Silvio O. Conte National Fish and Wildlife Refuge
- 9 Great Bay Resource Protection Partnership
- 10 High Peaks Initiative
- 11 Kennebec Woodland Partnership
- 12 Litchfield Hills Greenprint Collaborative
- 13 Lower Penobscot Watershed Coalition
- 14 MA-VT Woodlands Partnership
- 15 Mahoosuc Initiative
- 16 Mass-Conn Sustainable Forest Partnership
- 17 Mt. Agamenticus to the Sea Conservation Initiative
- 18 Staying Connected Initiative
- 19 Newfound Land Conservation Partnership
- 20 North Quabbin Regional Landscape Partnership
- 21 Orange County Headwaters Project
- 22 Quabbin to Cardigan Partnership
- 23 Quiet Corner Initiative
- 24 Rensselaer Plateau Working Forest Initiative
- 25 River-Link
- 26 Salmon Falls Watershed Collaborative
- 27 Sandy Brook Conservation Corridor
- 28 Southern New England Heritage Forest Partnership
- 29 Berkshire-Taconic Regional Conservation Partnership
- 30 Resilient Taunton Watershed Network
- 31 Chittenden County Uplands Conservation Project
- 32 Lower CT River and Coastal Region Land Trust Exchange
- 33 Rhode Island Woodland Partnership
- 34 12 Rivers Conservation Initiative
- 35 Upland Headwaters Alliance
- 36 West Suburban Conservation Council
- 37 Taylor Valley Conservation Project
- 38 Nashua River Forest Partnership
- 39 Merrimack Conservation Partnership
- 40 Mountain Conservancy Collaborative
- 41 Massachusetts Coastal Pine Barrens Partnership
- 42 Hudson to Housatonic Regional Conservation Partnership
- 43 Thames River Basin Partnership
- 44 Berkshire Wildlife Linkage Partnership

Partners to the RCP Network



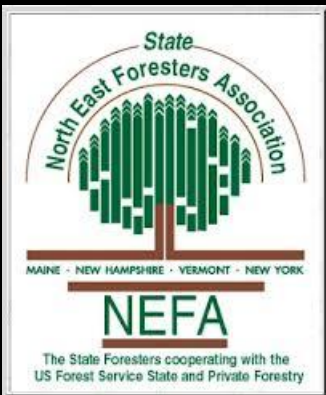
OPEN SPACE
INSTITUTE

The Jessie B. Cox Trust



HARVARD FOREST

Established 1907
Harvard University's 3500 acre laboratory & classroom
Long Term Ecological Research Site since 1988



- Partnership Coordination
- Landowner and Municipal Outreach
- Strategic Conservation Mapping
- Climate Change Resiliency Planning
- Access to Scientific Data Sets
- Capital Campaign Training
- Capital for Conservation



RCP Network Science Delivery Workshops on CT LCD, NALCC Data Sets, and Guidance Documents Sept. 2014 - April 2015



- 515 Participant-hours
- 22 RCPs ★



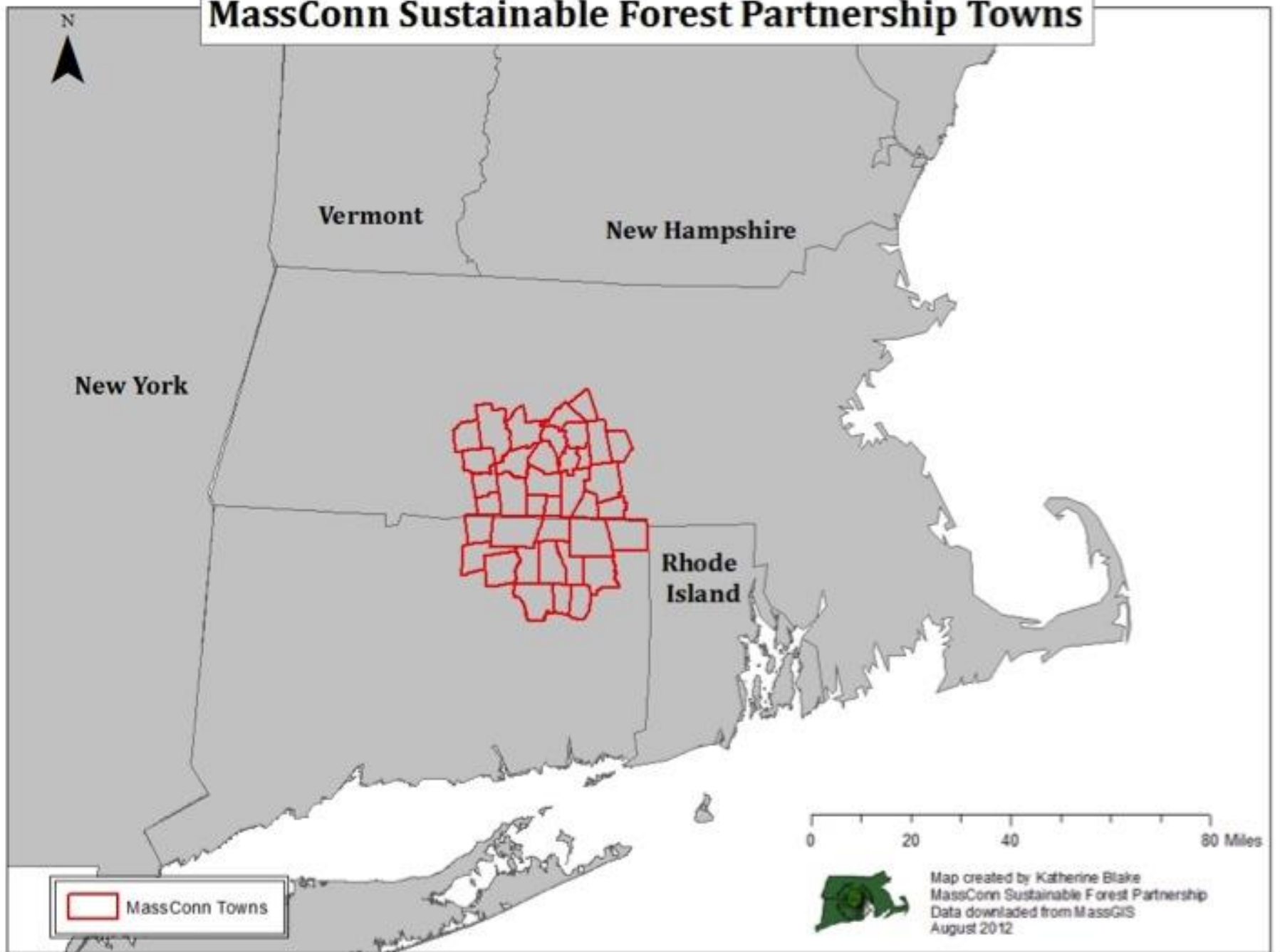
RCP Network Science Delivery Workshops on CT LCD, NALCC Data Sets, and Guidance Documents Sept. 2014 - April 2015



- 515 Participant-hours
- 22 RCPs ★



MassConn Sustainable Forest Partnership Towns

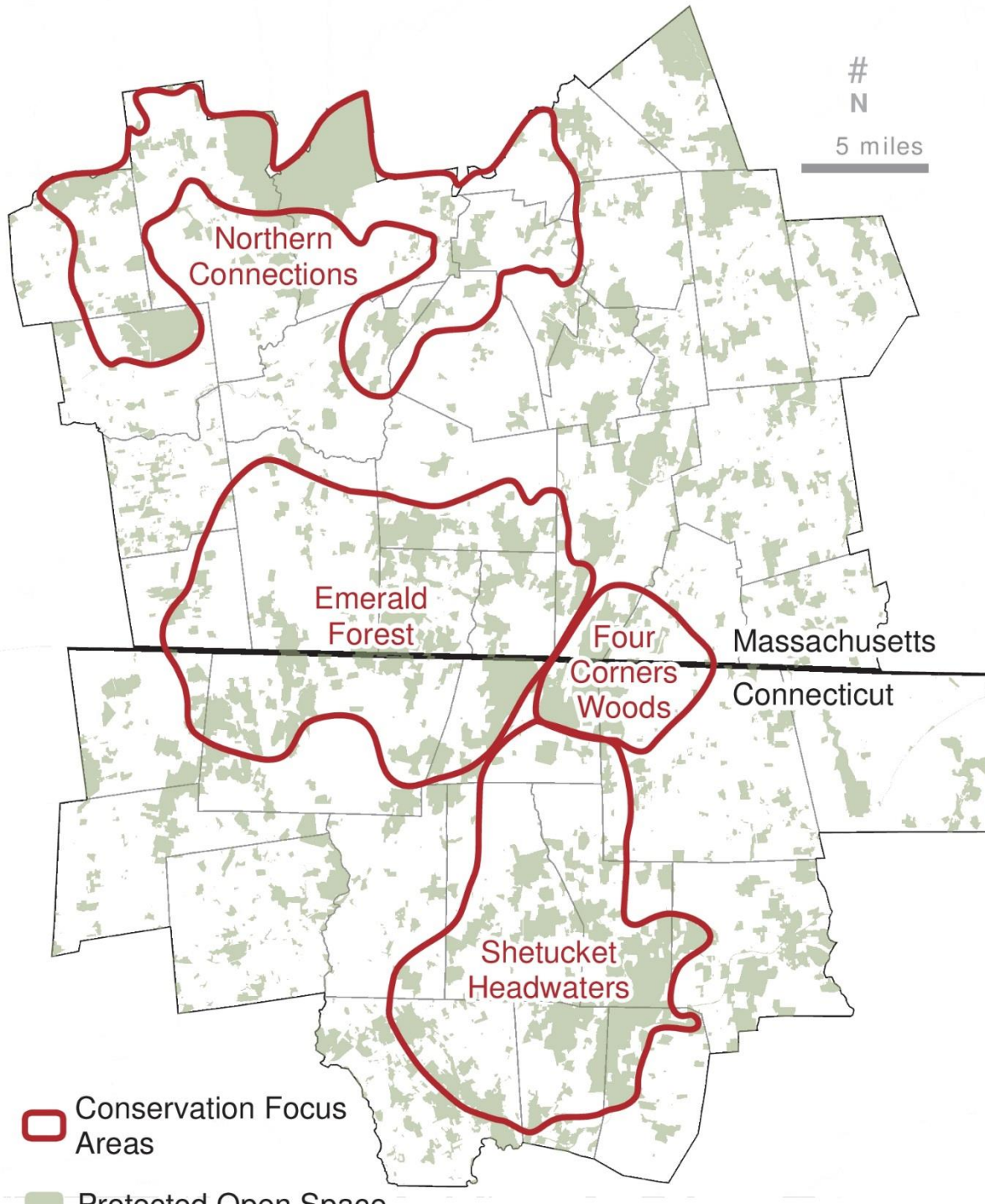


 MassConn Towns

0 20 40 80 Miles

 Map created by Katherine Blake
MassConn Sustainable Forest Partnership
Data downloaded from MassGIS
August 2012



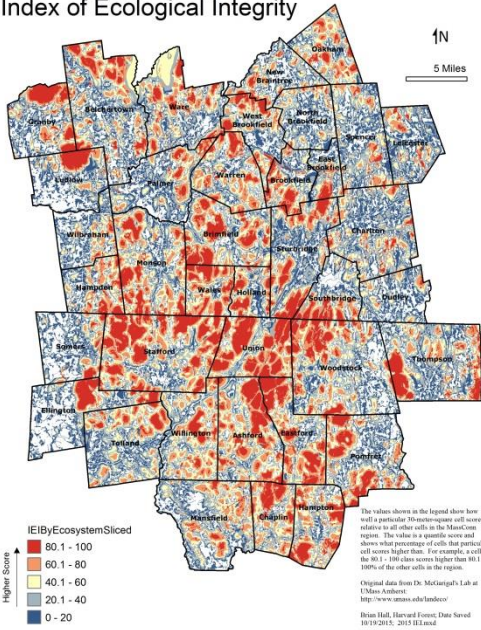


Draft Conservation Vision - Data

We protect high-quality natural lands (IEI), that are the home for rare and diverse species (NHESP), both now and in the future (TNC Resilience, Nearness To POS*). The lands are large and well connected so species can roam around the landscape (TNC Flow).

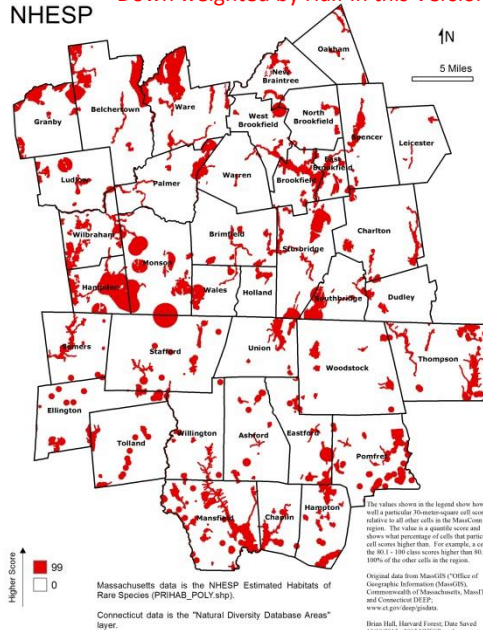
DRAFT

Index of Ecological Integrity

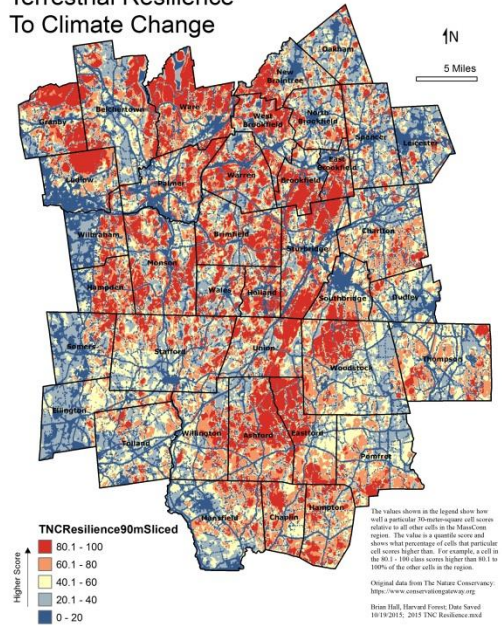


NHESP

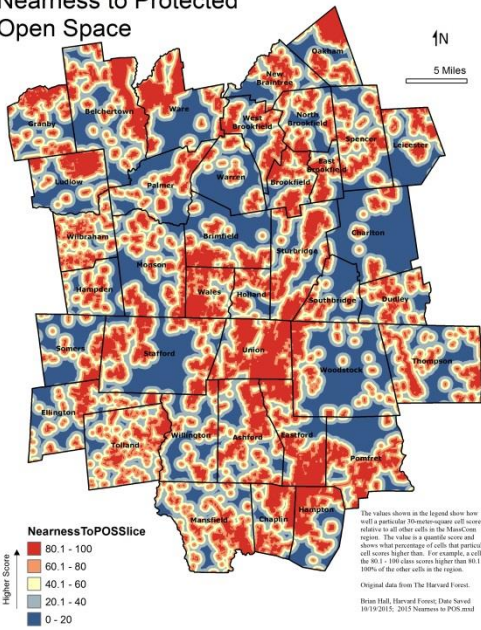
Down weighted by Half In this Version



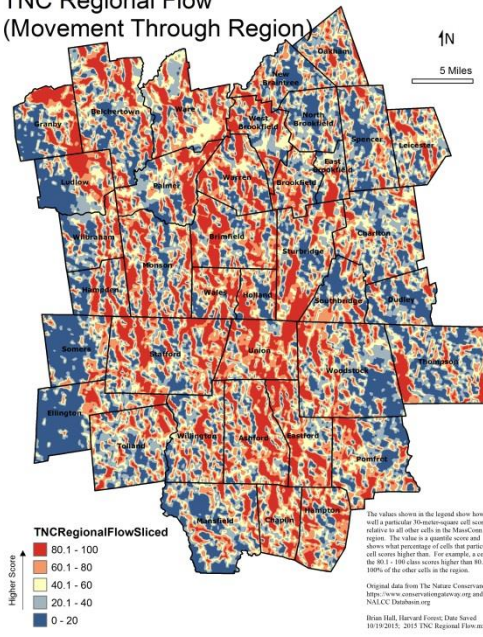
Terrestrial Resilience To Climate Change



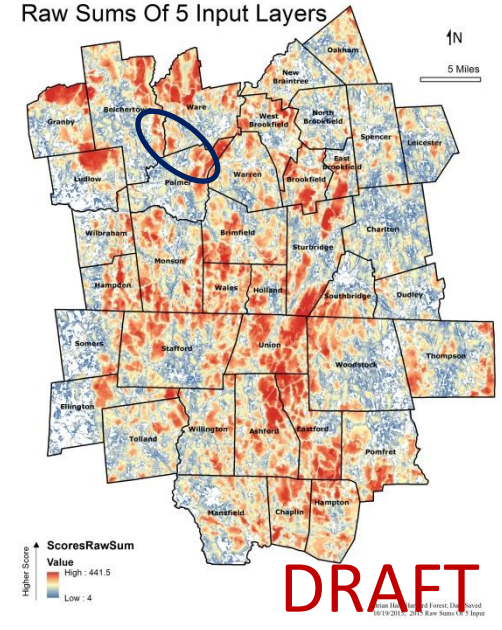
Nearness to Protected Open Space



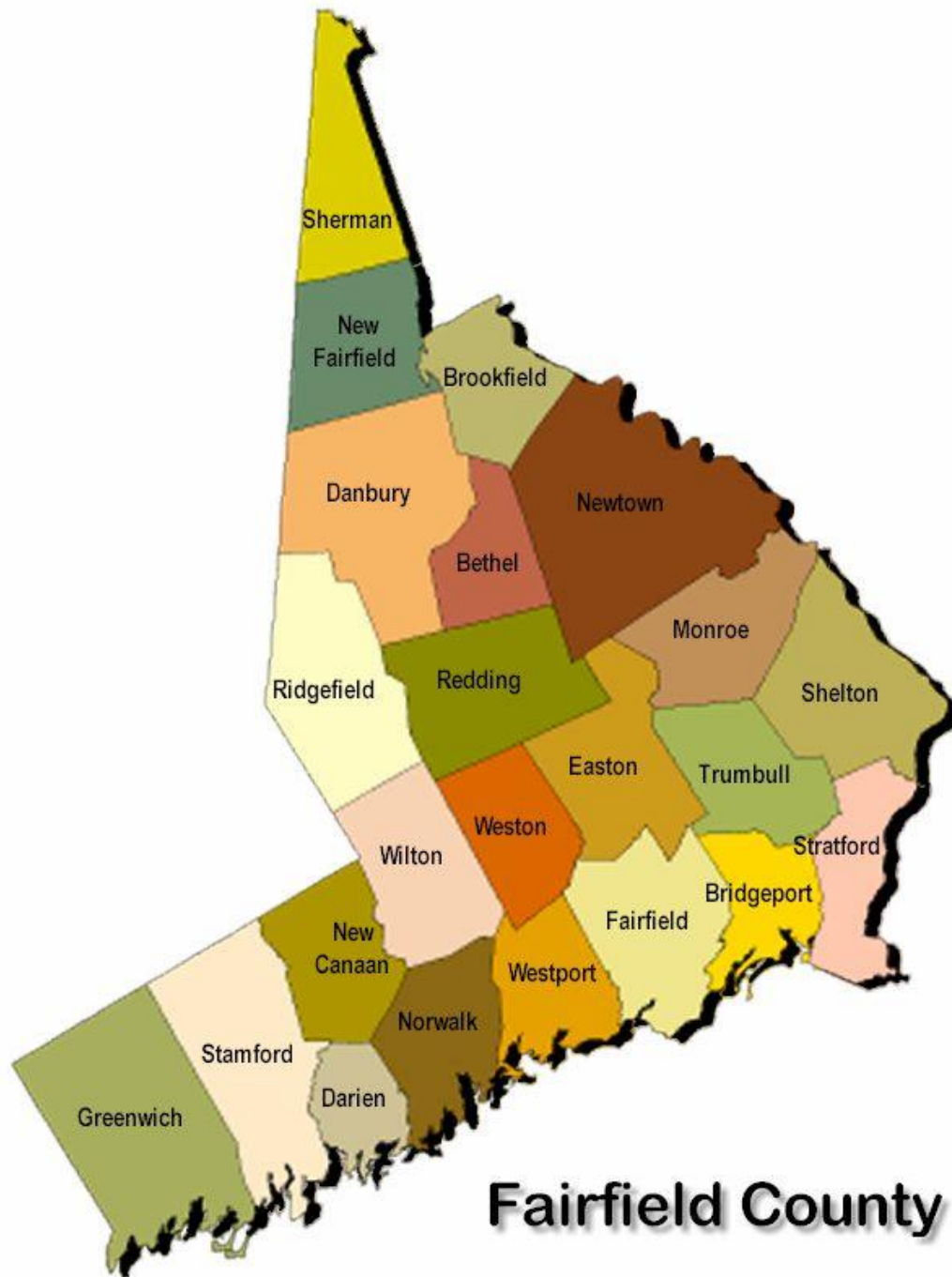
TNC Regional Flow (Movement Through Region)



Raw Sums Of 5 Input Layers



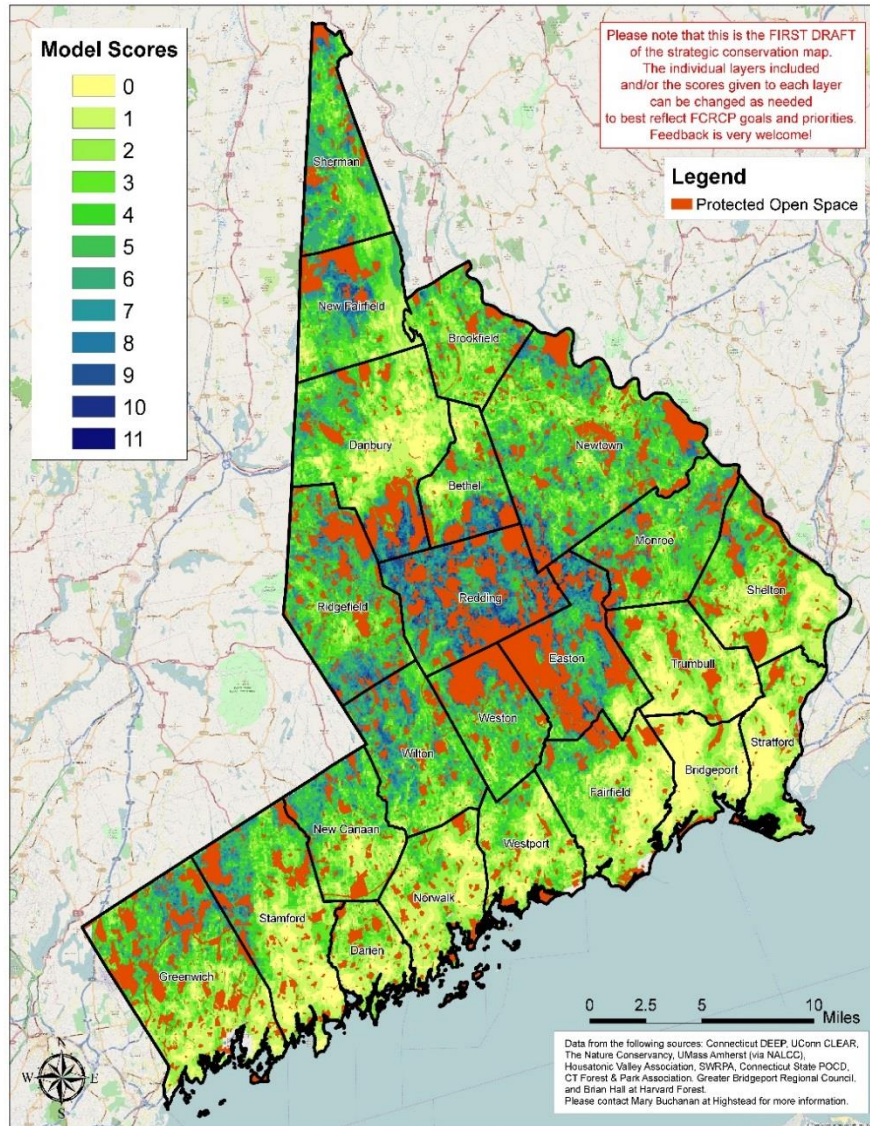




Fairfield County



Areas of High Conservation Value - DRAFT

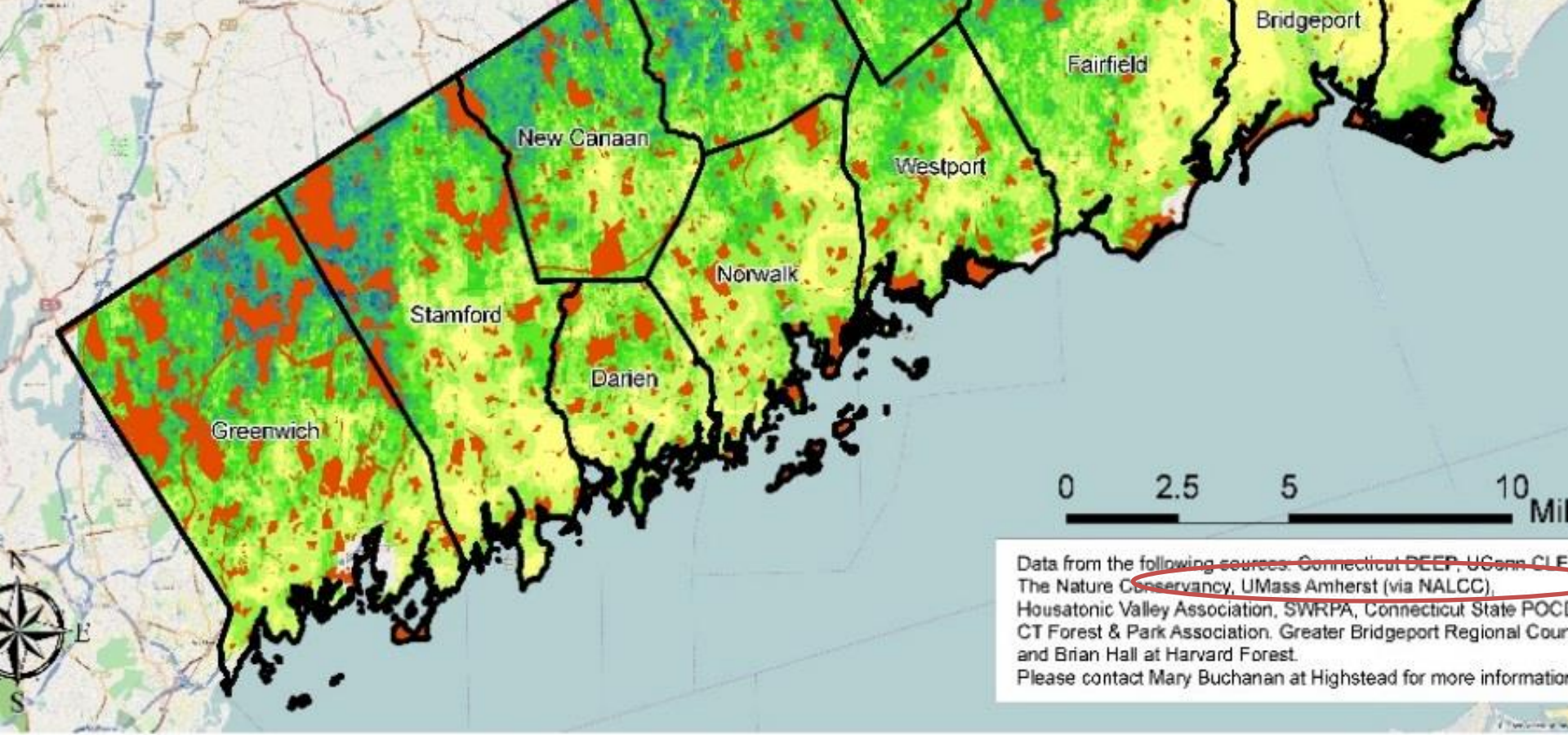


This co-occurrence model for Fairfield County, which is a 90-m grid, was created by adding up eleven individual layers representing the following values:

- | | |
|--|--|
| 1) Climate Resiliency | 7) Wood Thrush Habitat Capacity |
| 2) Index of Ecological Integrity | 8) Proximity to Open Space |
| 3) Aquifer Protection Areas & High-Quality Groundwater | 9) Connecticut State POCD Conservation Areas |
| 4) Inland Wetland Soils | 10) Trails & Trail Buffers |
| 5) Macroinvertebrate Multimetric Index (Bellucci et al.) | 11) Prime Farmland Soils |
| 6) Core Forests | |

Each cell has a score of either 0 or 1 for each of these eleven layers. A score of 0 represents below-average/absence. A score of 1 represents above-average/presence. The final model scores can range from 0 to 11, and indicate how many of these conservation values are present in any given area.

Map by Mary Buchanan, Highstead, May 2015.

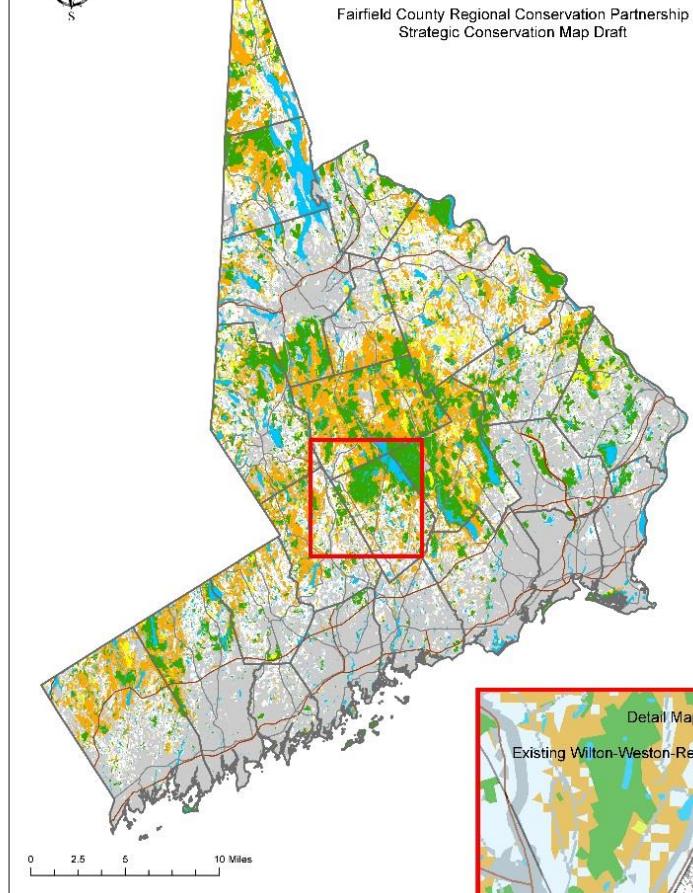


The co-occurrence model for Fairfield County, which is a 90-m grid, was created by adding up eleven individual layers representing the following values:

- | | |
|--|--|
| 1) Climate Resiliency | 7) Wood Thrush Habitat Capacity |
| 2) Index of Ecological Integrity | 8) Proximity to Open Space |
| 3) Aquifer Protection Areas & High-Quality Groundwater | 9) Connecticut State POCD Conservation Areas |
| 4) Inland Wetland Soils | 10) Trails & Trail Buffers |
| 5) Macroinvertebrate Multimetric Index (Bellucci et al.) | 11) Prime Farmland Soils |
| 6) Core Forests | |

Each cell has a score of either 0 or 1 for each of these eleven layers. A score of 0 represents below-average/absence. A score of 1 represents above-average. The final model scores can range from 0 to 11, and indicate how many of these conservation values are present in any given area.

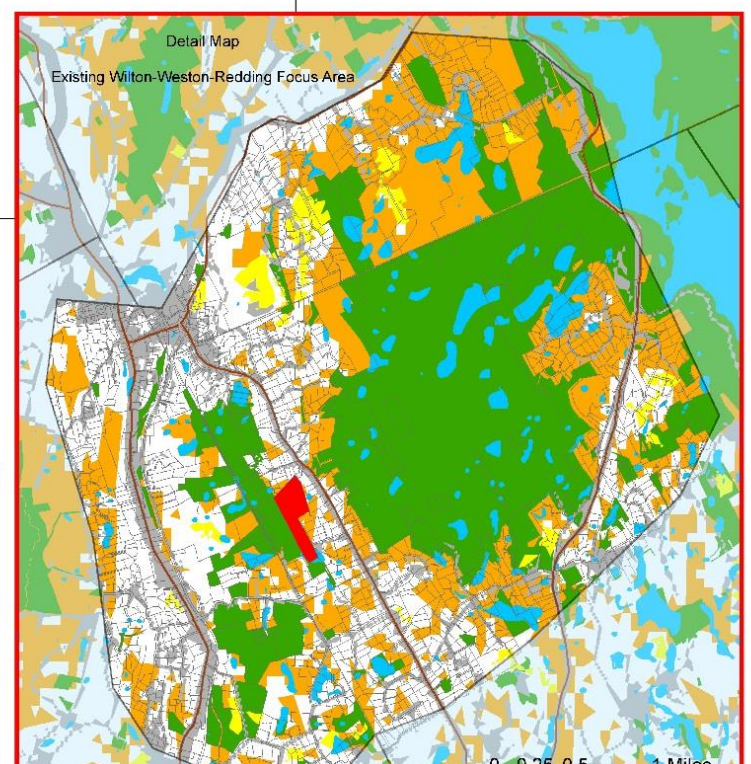
Map by Mary Buchanan, Highstead, May 2015.



Fairfield County Regional Conservation Partnership

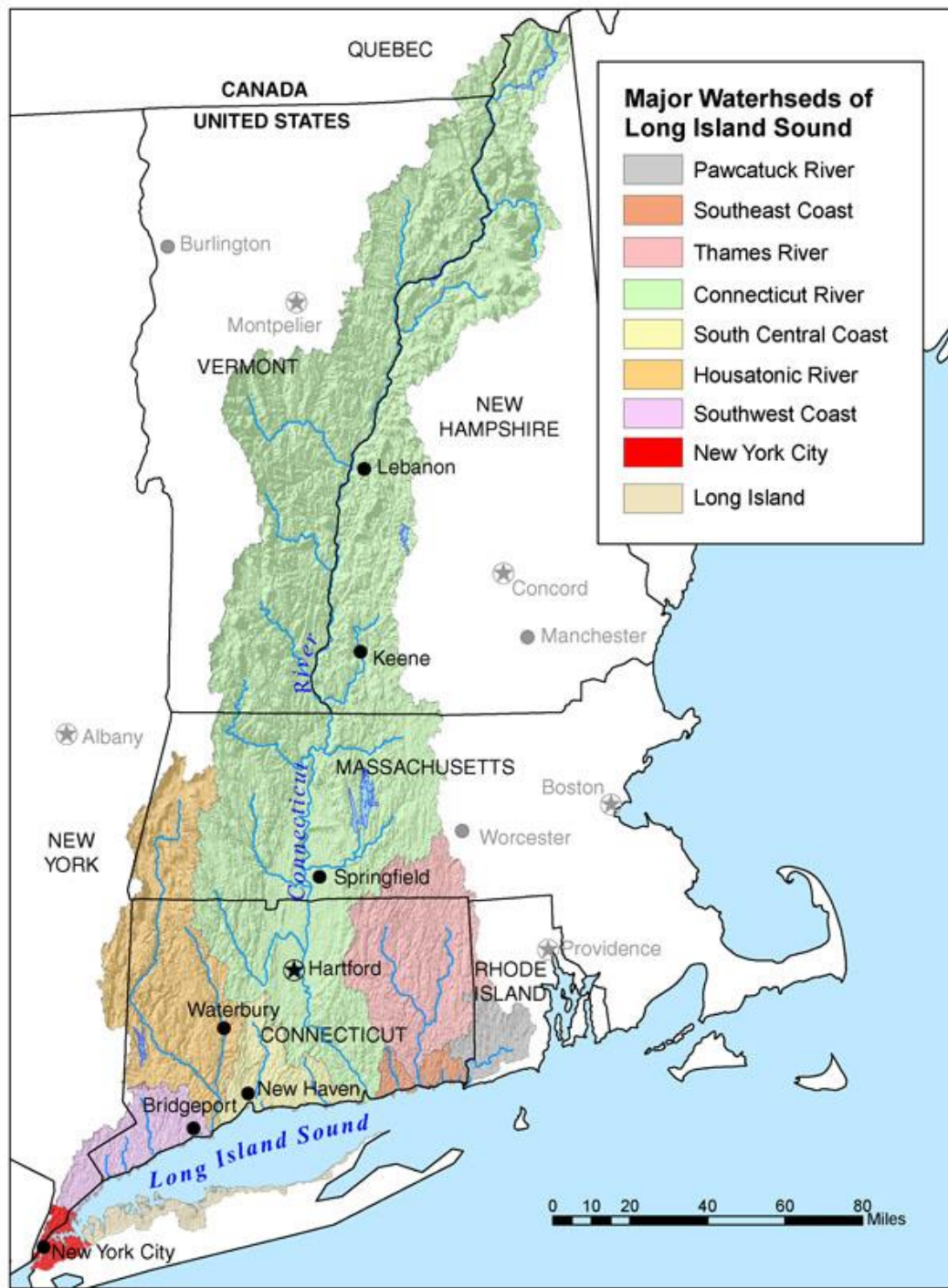
Endorsement Application:
Aspetuck Land Trust

Belknap Property
Weston, CT



Legend

-  Belknap Property
-  Parcels in Existing Focus Area
-  Water
-  Developed Areas
-  Agricultural Land
-  Protected Open Space
-  Undeveloped Lands of Regional Conservation Value



Habitat Capability Maps for Surrogate Species

Mature Upland and Riparian Hardwood Forest

- Louisiana Waterthrush
- Wood Thrush

Mature Mixed Forest

- Blackburnian Warbler

Young Forest and Shrubland

- American Woodcock
- Prairie Warbler

Forested Wetland

- Northern Waterthrush
- Red-shouldered Hawk

LISW – RCPP – HFRP Ranking Criteria

	Criteria	Max. Points	Points Assigned
Sustainability	<p>The application package contains a long-term (10+ years) forest management plan completed by a licensed professional forester and or a landowner statement of intent signifying their willingness to have land managed as habitat in perpetuity.</p> <p>SCALE: Active Long-term forest management plan attached = 100 points, landowner statement of intent = 30 points, both = 130 points.</p>	130	0
	<p>The number of acres of land in the LI Sound Watershed</p> <p>SCALE: 1 point per acre for parcels given a range of 0 to 100 by acre from 1 to 100. Any parcel over 100 acres is given the maximum points.</p>	100	0
Natural Resource Features	<p>The number of acres of forestland.</p> <p>SCALE: 1 point for each acre to be treated with a HFRP easement and 1 point for each forested acre for parcels with at least 67% of the parcel in forest cover. Any parcel over 100% forested parcel of 400-50 acres or more is given the maximum points. Weigh it</p>	100	0
	<p>The number of acres in surface drinking water supply source water protection areas.</p> <p>SCALE: 1 point for each acre of land within a surface drinking water supply source water protection area. Any parcel over 100 acres is given the maximum points.</p>	100	0
	<p>The number of acres in an area defined as having above average resiliency to climate change.</p> <p>SCALE: 1 point for each acre of land within a ¼ mile of an area of land with above average resiliency to climate change. Any parcel over 100 acres is given the maximum points.</p>	100	0
	<p>The number of acres in an area defined as being within or abutting areas containing habitat or core forests prioritized by federal or state agencies (including State Wildlife Action Plans) or included in the CT River Watershed Landscape Conservation Design (connecttheconnecticut.org) Tier 1 Cores, Tier 2 Cores, or Connectors, or by Regional Conservation Partnerships or other large landscape conservation or stewardship initiatives.</p> <p>SCALE: 1 point for each acre of land within priority habitat or forest cores or connectors. Any parcel over 100 acres is given the maximum points.</p>	100	0
	<p>Maximum Points for Resource and Sustainability Factors</p>	630	0

Natural Resource Features

The number of acres in surface drinking water supply source water protection areas.
SCALE: 1 point for each acre of land within a surface drinking water supply source water protection area. Any parcel over 100 acres is given the maximum points.

The number of acres in an area defined as having above average resiliency to climate change.
SCALE: 1 point for each acre of land within a ¼ mile of an area of land with above average resiliency to climate change. Any parcel over 100 acres is given the maximum points.

The number of acres in an area defined as being within or abutting areas containing habitat or core forests prioritized by federal or state agencies (including State Wildlife Action Plans) or included in the CT River Watershed Landscape Conservation Design (connecttheconnecticut.org) Tier 1 Cores, Tier 2 Cores, or Connectors, or by Regional Conservation Partnerships or other large landscape conservation or stewardship initiatives.
SCALE: 1 point for each acre of land within priority habitat or forest cores or connectors. Any parcel over 100 acres is given the maximum points.

Maximum Points for Resource and Sustainability Factors

Best way to reach Bill Labich, RCP Network Coordinator

- blabich@highstead.net

Learn more about Regional Conservation Partnerships (RCPs):

- www.wildlandsandwoodlands.org/rcpnetwork

Want to find out about RCP-events, activities, and join others in sharing ideas for innovation?

- www.rcpnetwork.org