

NOAA and the NALCC- Partners, Customers, and Interagency Resources

Ellen L. Mecray

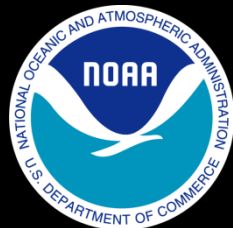
National Oceanic and Atmospheric Administration (NOAA)

Eastern Region Climate Services Director

Taunton, MA

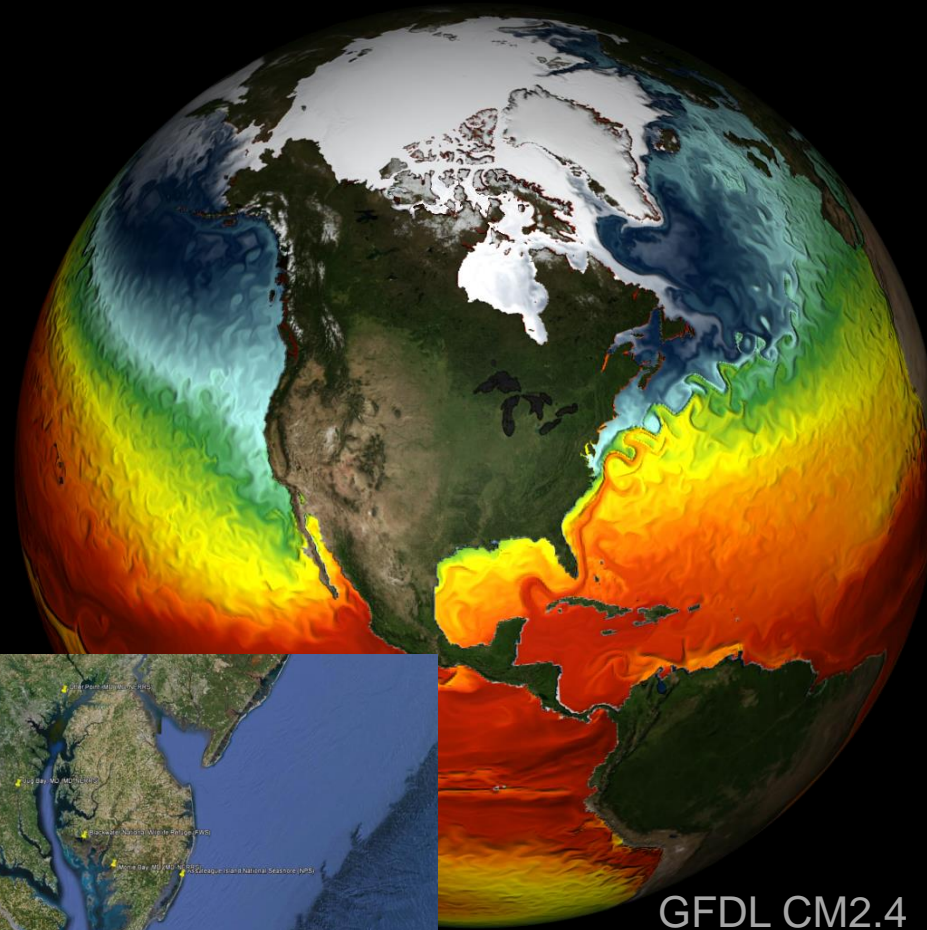
Ellen.L.Mecray@noaa.gov

508-824-5116 x263



NOAA, Why are we on the LCC

- There are many overlaps in federal science and service delivery to be leveraged
- Multiple audiences for the science
- Listening for opportunities to offer NOAA information to LCC audiences
- Work together to inform on-the-ground conservation and



GFDL CM2.4
climate model
SSTs



Tools and Resources Useful to NALCC Members- Programs

- Habitat Focus Areas

- Chesapeake Bay- Wetland and near-shore habitat loss from SLR; focus on oyster reefs and fish passage; climate vulnerability assessment
- Penobscot Bay- fish passage, migratory fish

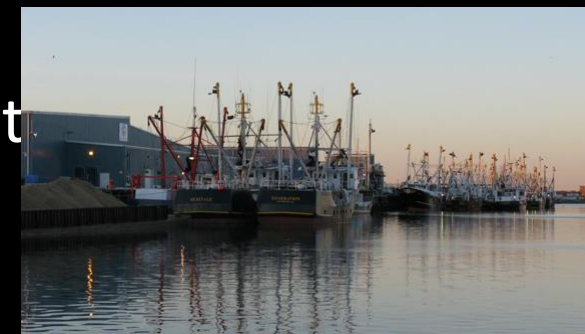
- Sentinel Sites

- Chesapeake Bay- subsidence, water quality, temp and salinity to monitor SLR in the Bay (interagency partners)

- Integrated Ecosystem Assessments

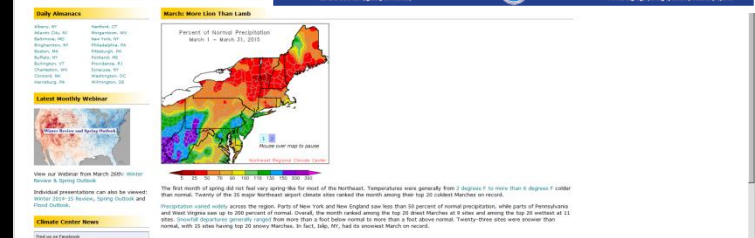
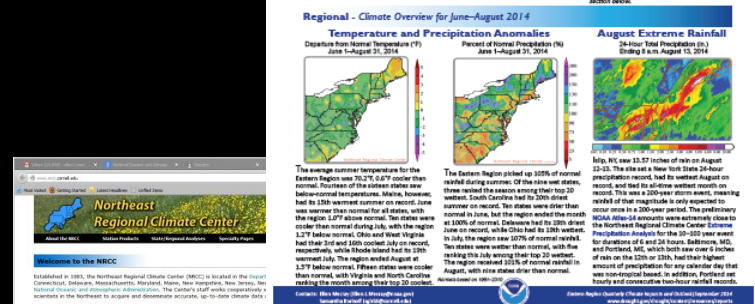
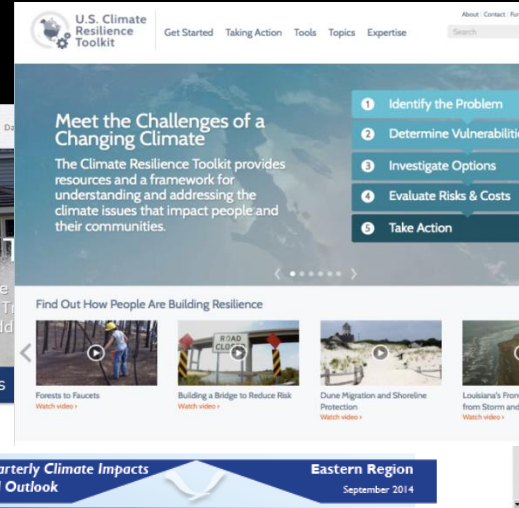
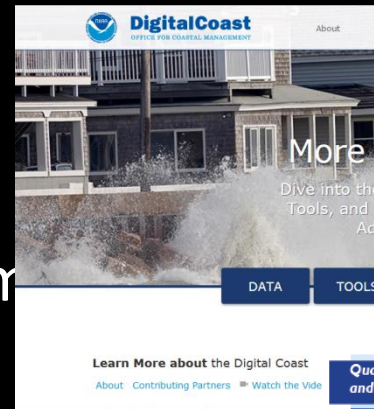
- Northeast Shelf- Science to management new era of ocean management

- Regional Climate Services



Tools and Resources Useful to NALCC Members- Information

- Fisheries
 - Restoration
 - Species vulnerability assessment
- Place-based stewardship
 - Sanctuaries and NERR
- Climate Info
 - Climate at a Glance
 - Climate Resilience Toolkit
 - Information Dashboards
 - Applied Climate Info System
- Coastal resources



Opportunities

- **Leverage existing resources-** Multiple agencies with existing assets at the table, waiting to hear from F&W users;
- **Science Delivery-** A huge opening for educating the LCC audience on the science from the LCC *AND FROM ITS PARTNERS*
- **Expand the LCC topical and spatial coverage-** with the regional, state, and local experts (e.g., Chesapeake Bay, Habitat Focus Areas, Sentinel Sites, Integrated Ecosystem Assessments)
- Examples from other LCCs:
 - AK- Changes in Coastal Storms and their Impacts
 - CA- Adapting to SLR Along the Pacific Coast
 - Gulf and SE- Vulnerability Assessments and Blueprint



Questions?

Ellen L. Mecray

NOAA National Centers for Environmental Information

Eastern Region Climate Services Director

Ellen.L.Mecray@noaa.gov

<http://www.ncdc.noaa.gov/rcsd/eastern>

April 6, 2016

NALCC Steering Committee

Annapolis, MD

